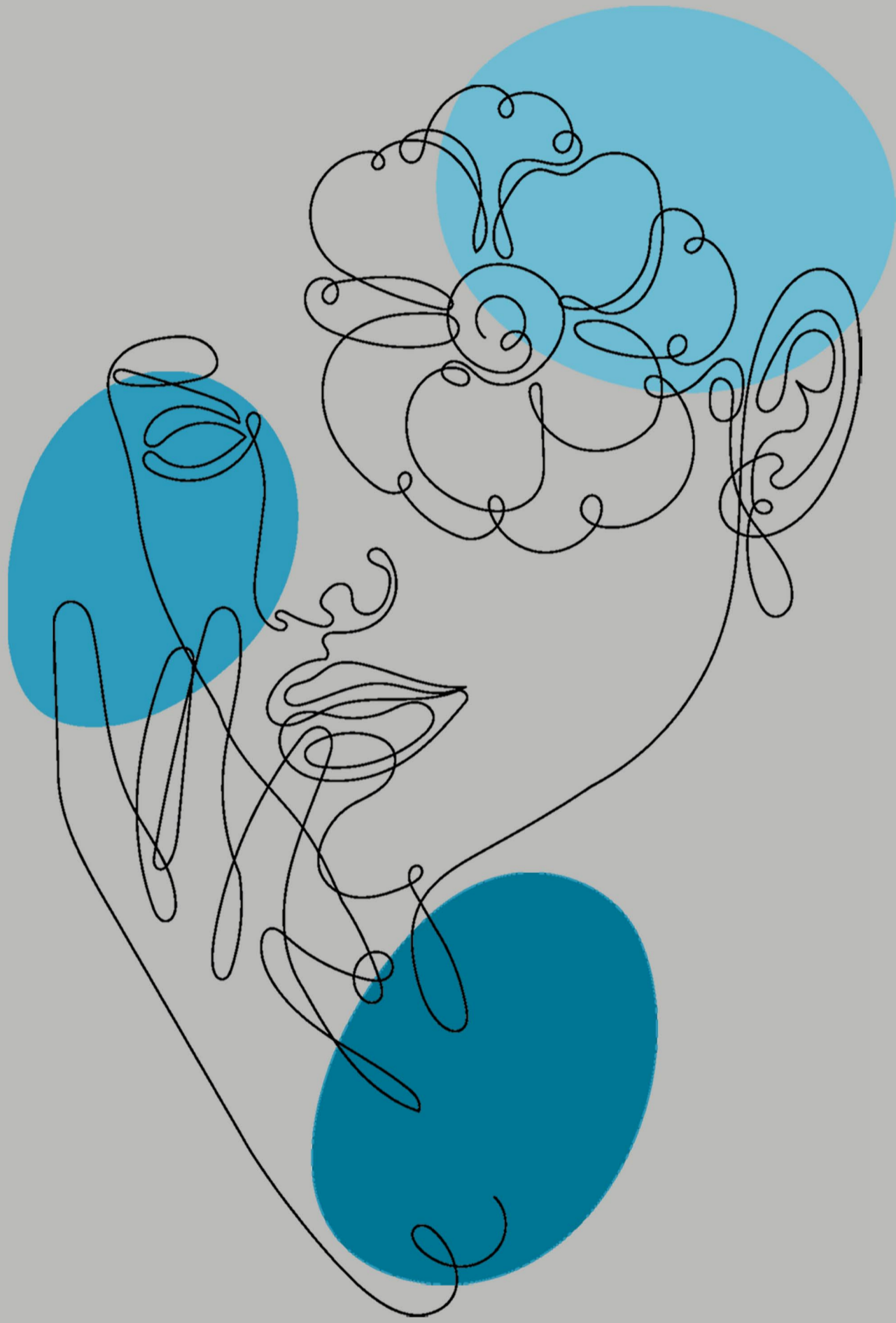


# NEON<sup>TM</sup> TILE



**Experience**  
of natural surface...

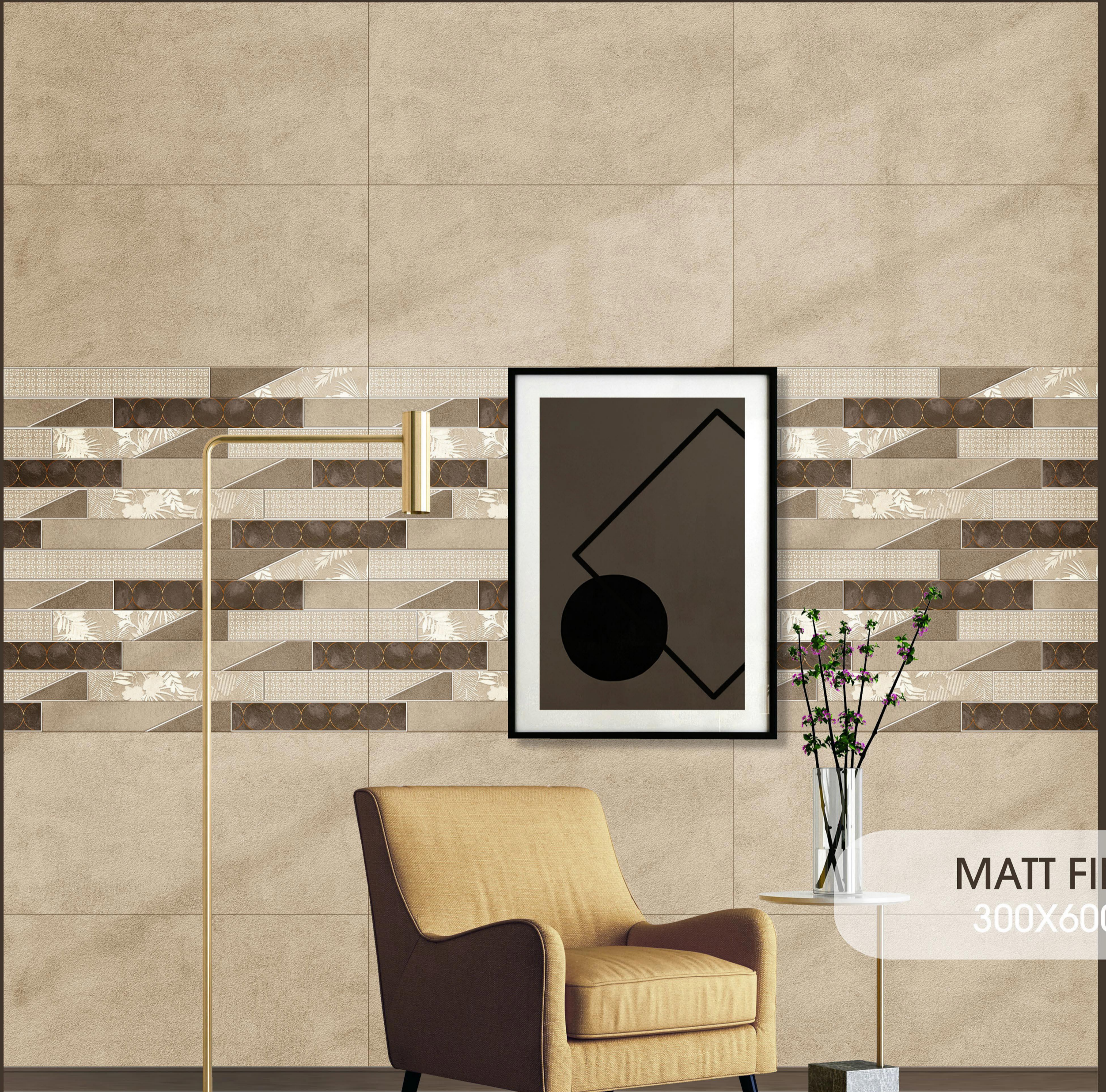
**Mfg. & Exporter Of :**

- ▶ Wall Tiles
- ▶ Floor Tiles
- ▶ Vitrified Tiles
- ▶ Sanitary Wares

**DIGITAL  
WALL TILES  
300x600MM**

# EXCLUSIVE

*New Collection*



**MATT FINISH**  
300X600mm



Matt Finish

D.NO - SM-1501

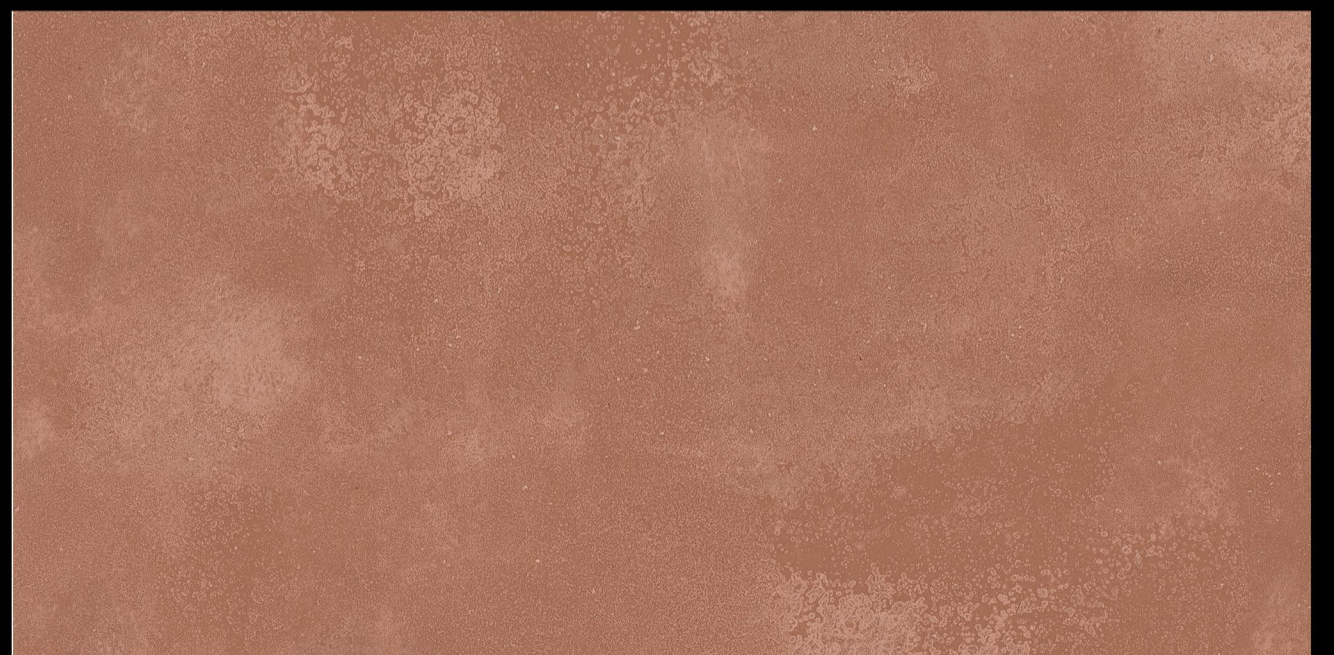
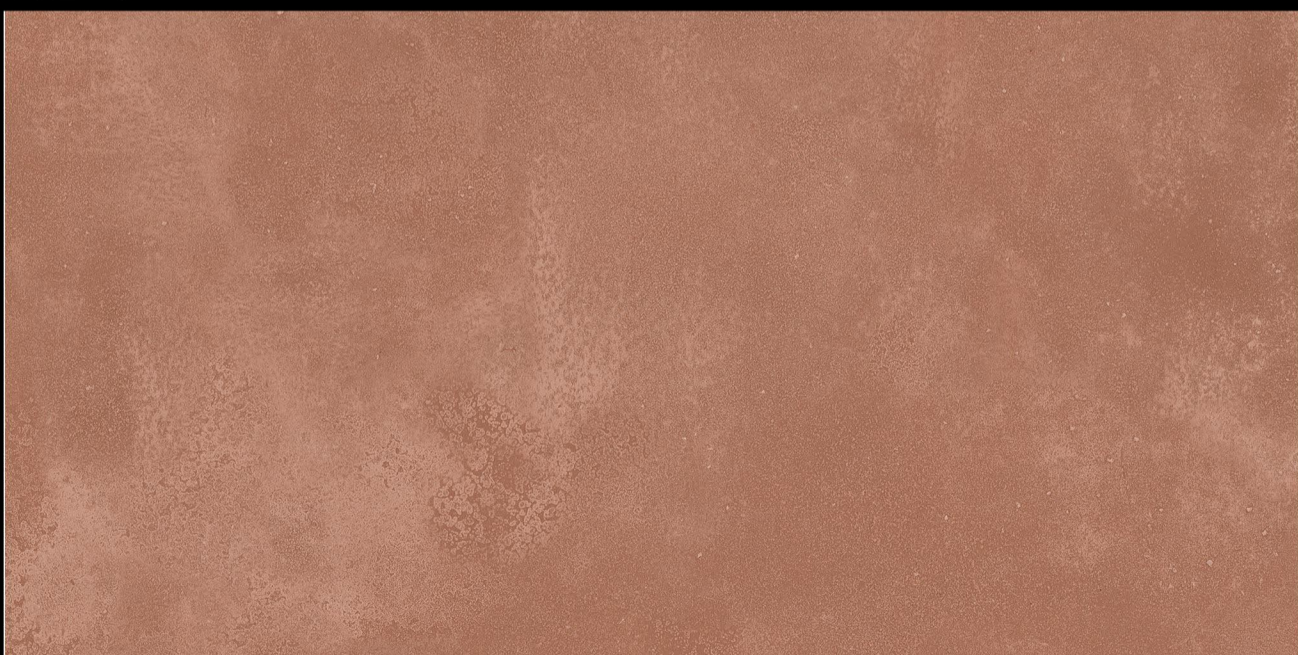


L



HL-1

HL-1

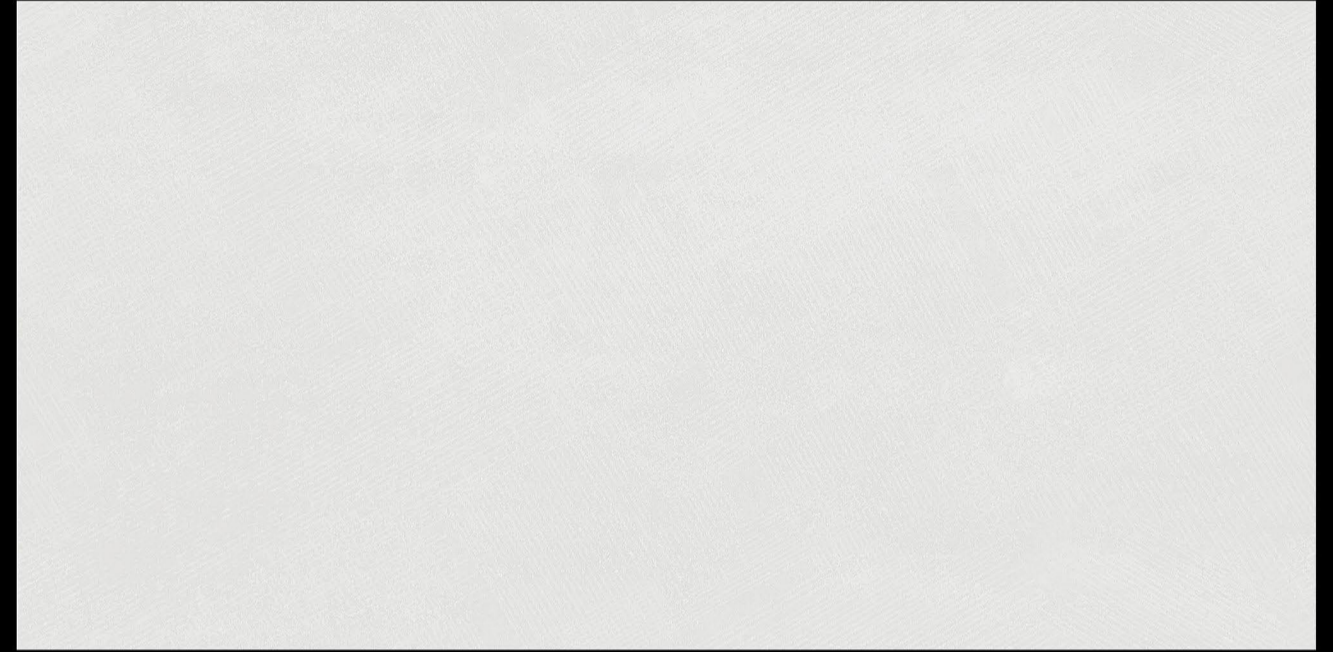
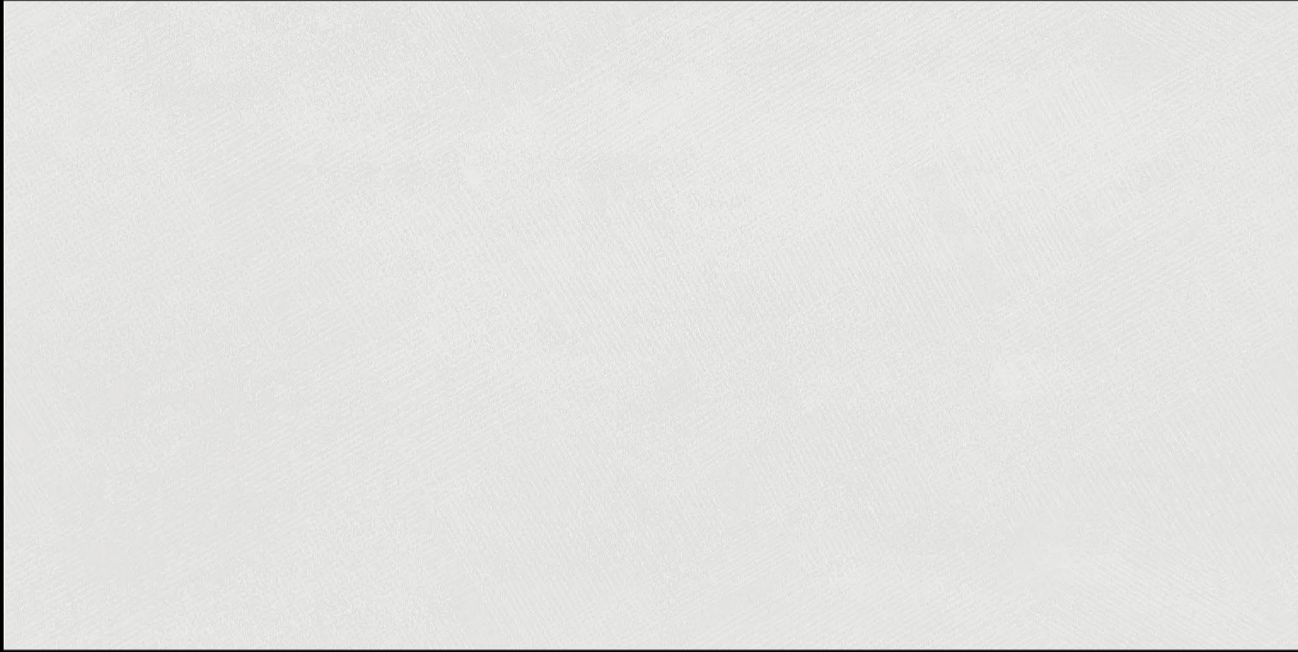


D

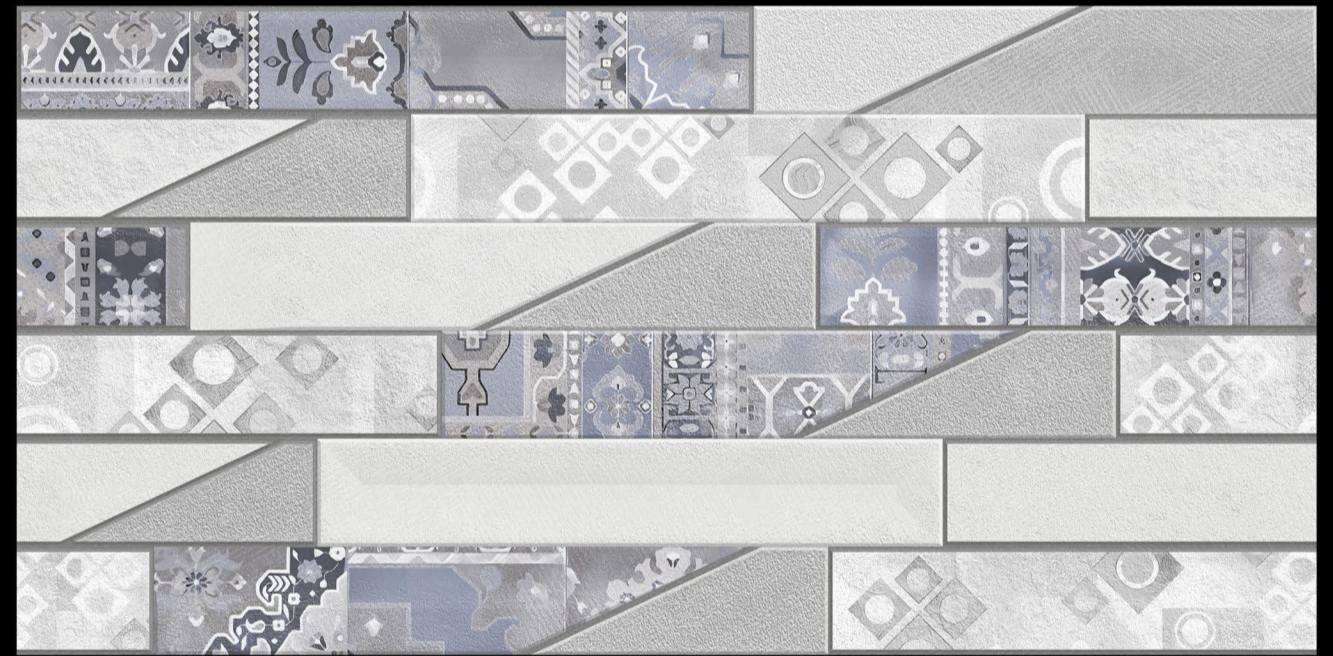
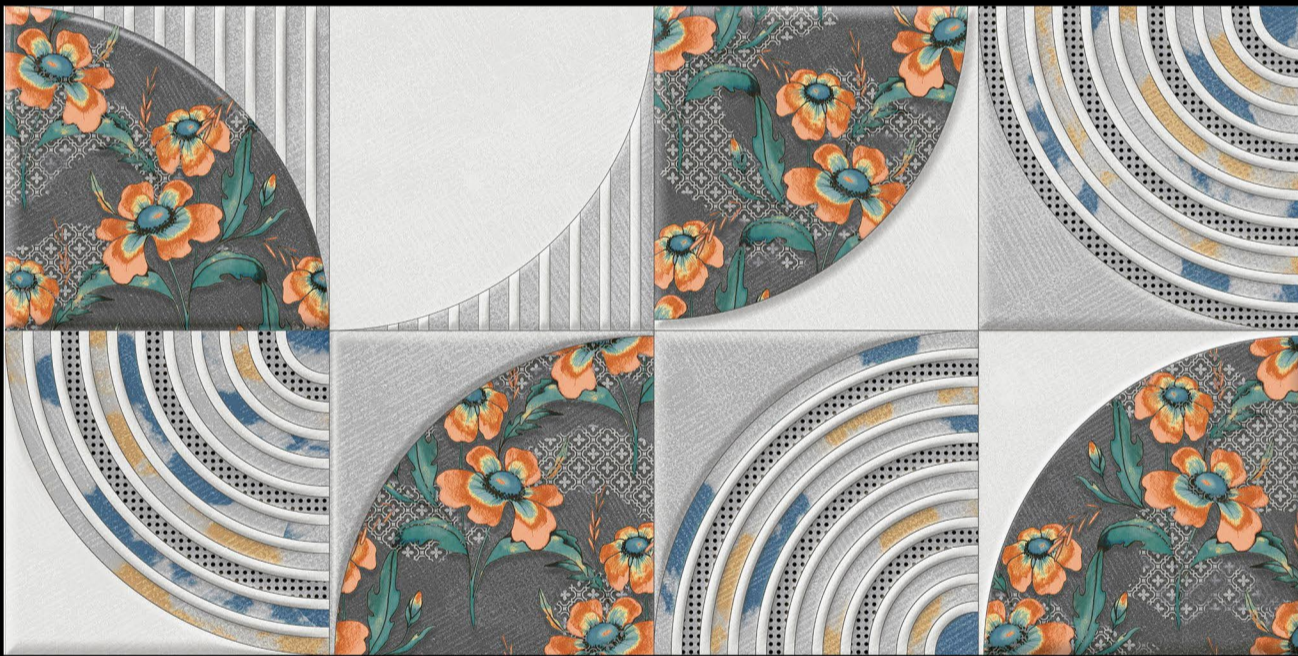


Matt Finish

D.NO - SM-1503

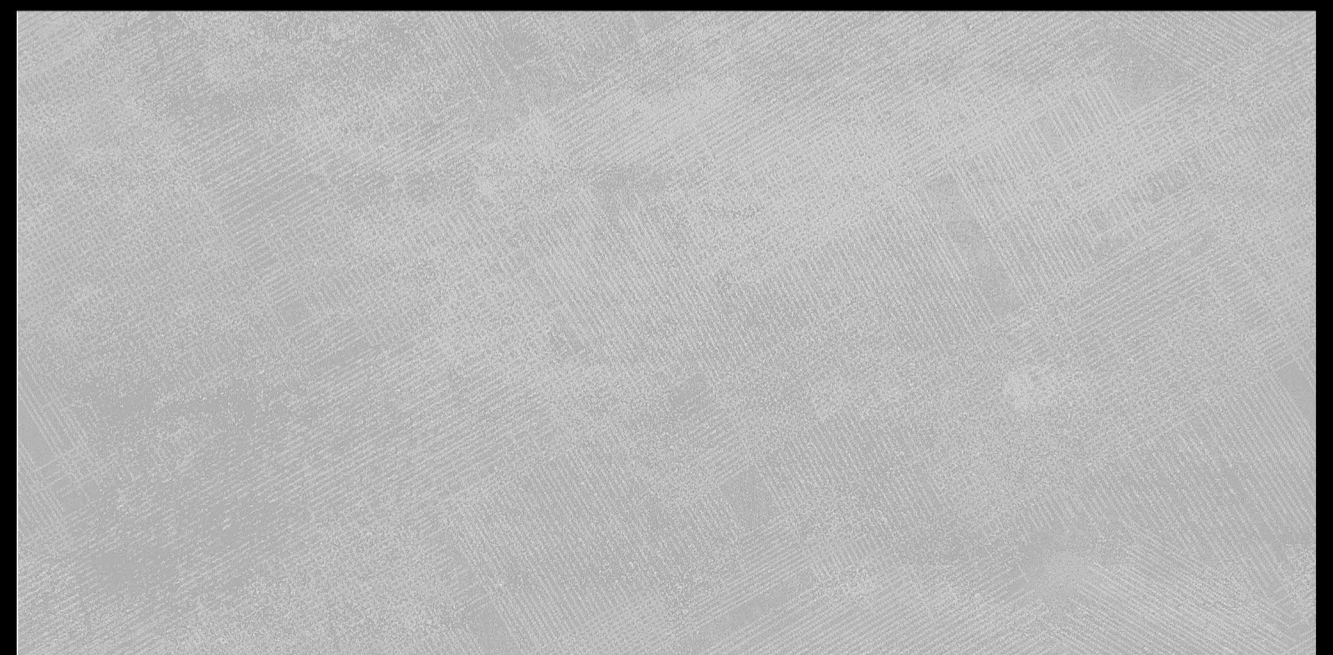
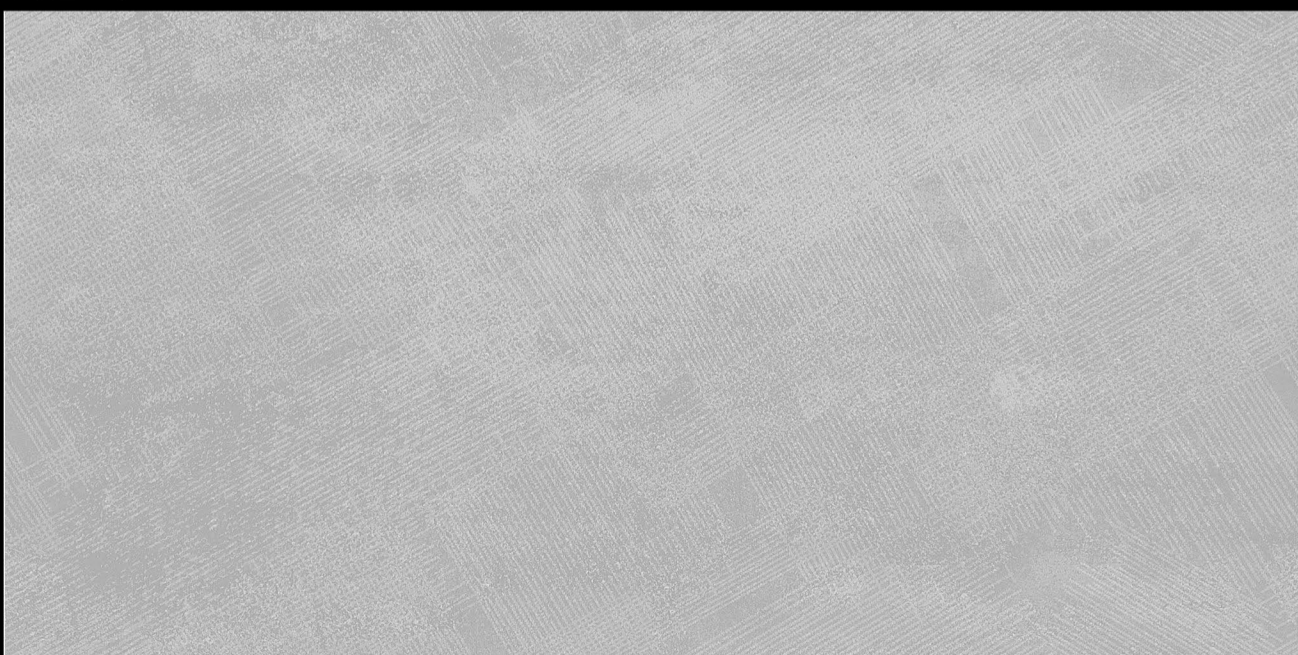


L



HL-1

HL-2



D



Matt Finish

D.NO - SM-1505



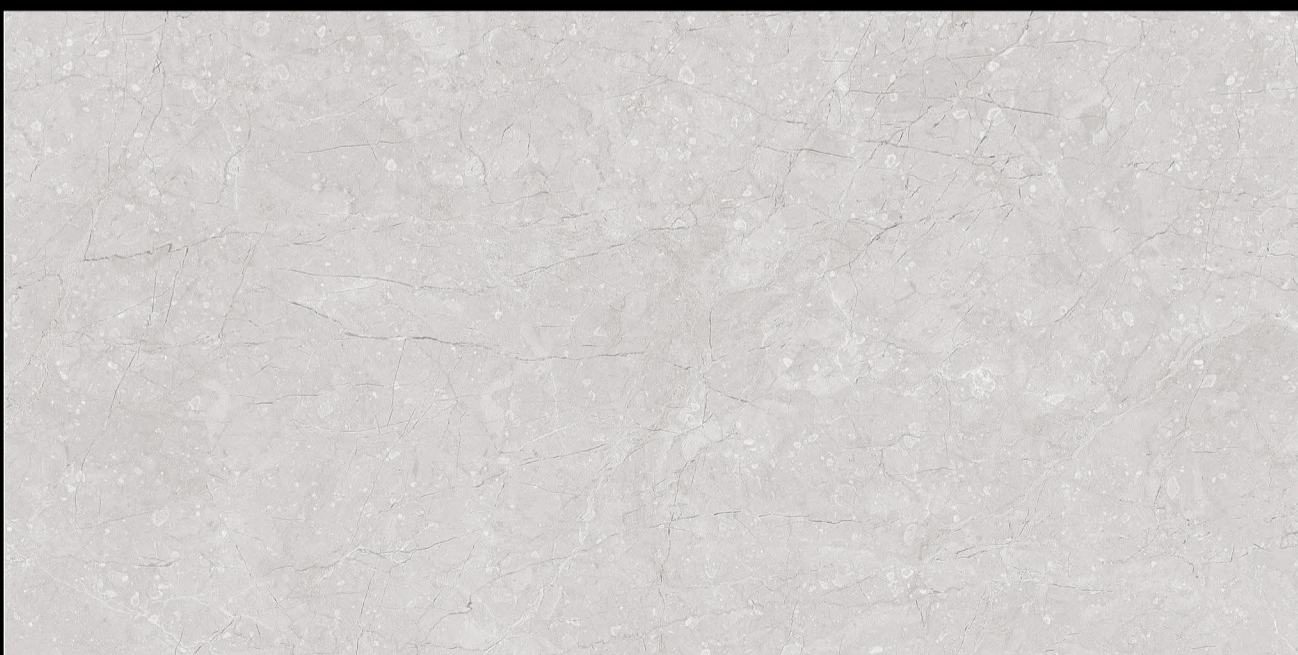
L



HL-1



HL-2

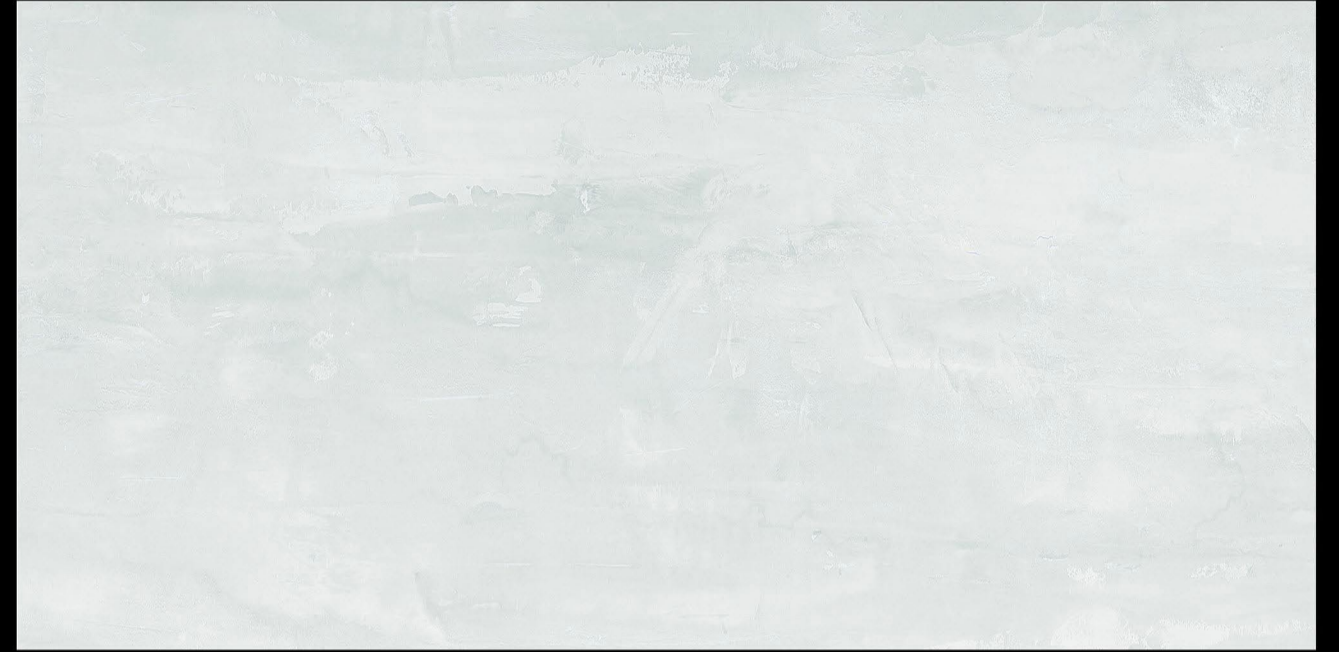
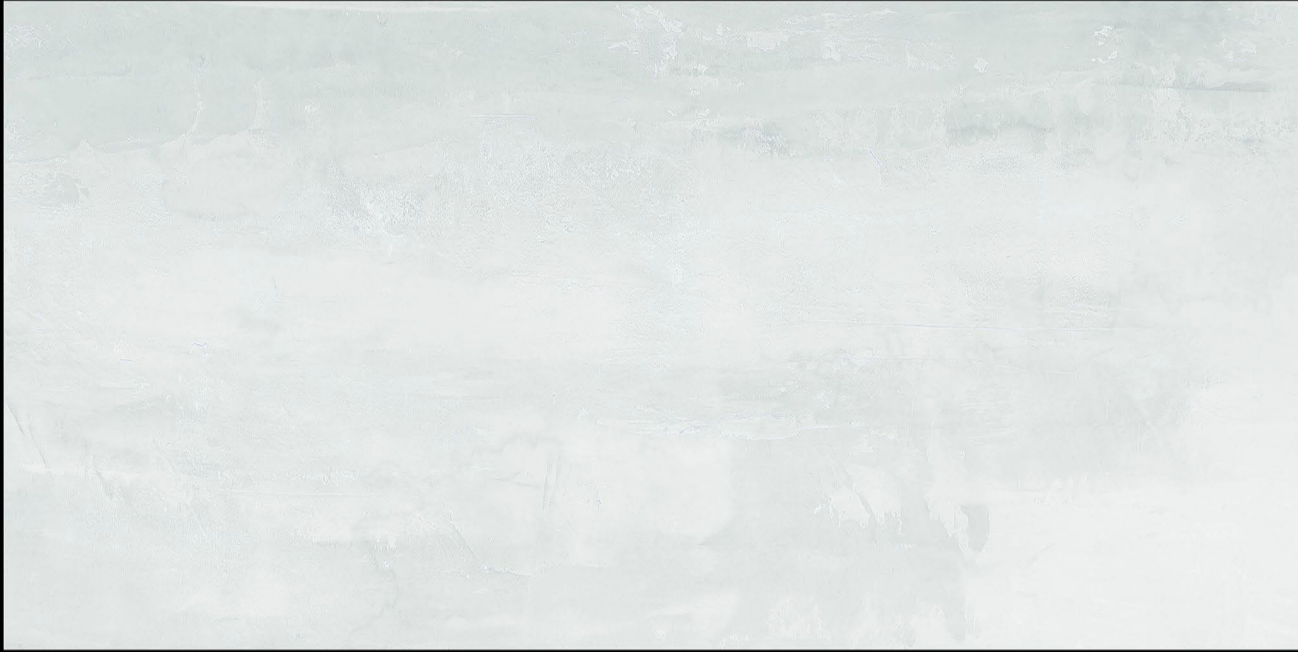


L



Matt Finish

D.NO - SM-1506

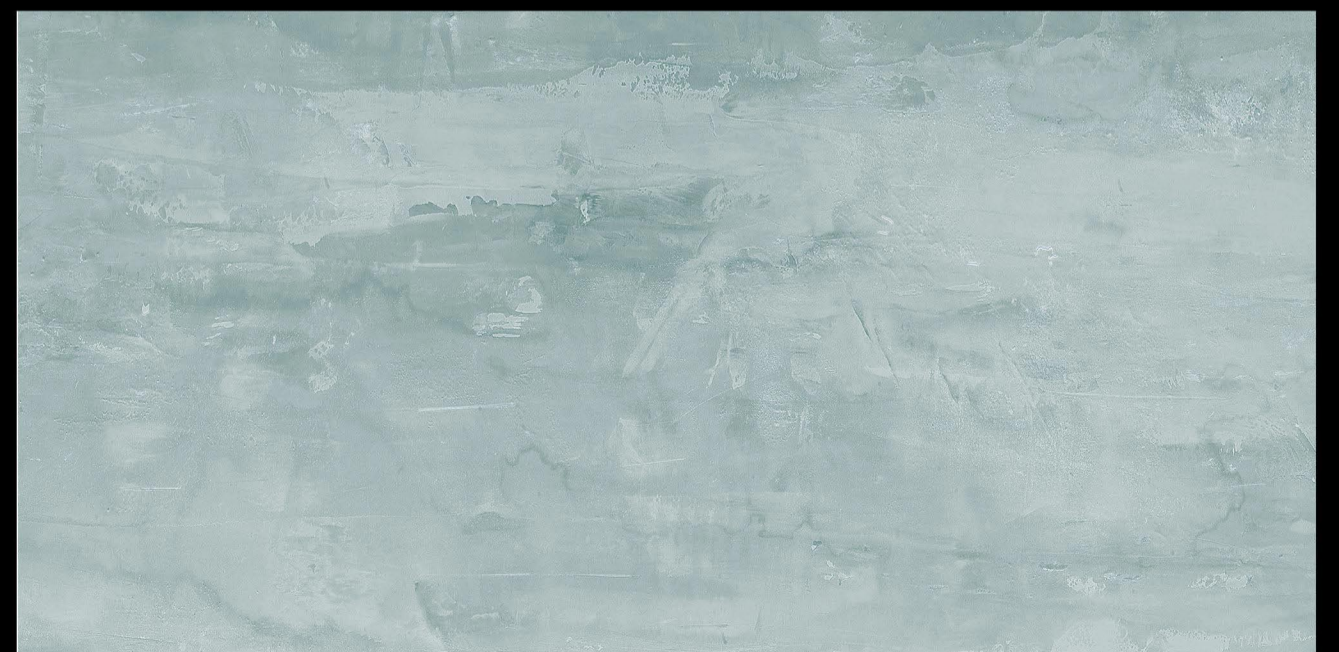
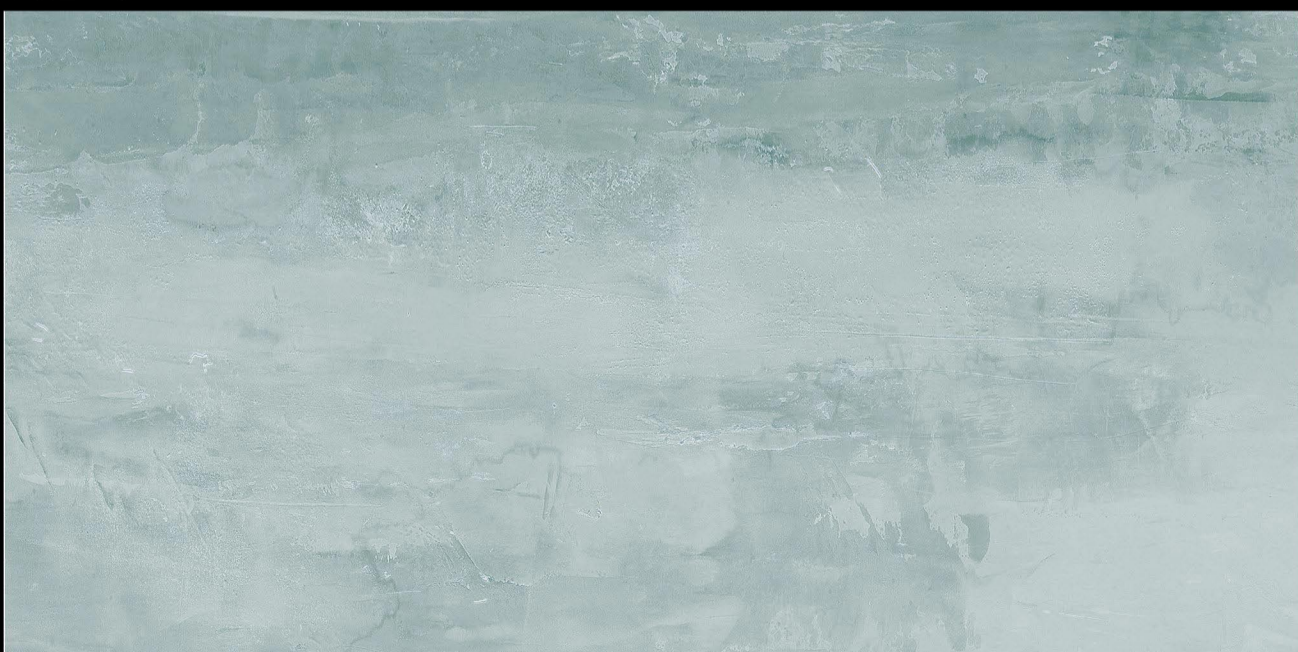


L



HL-1

HL-2

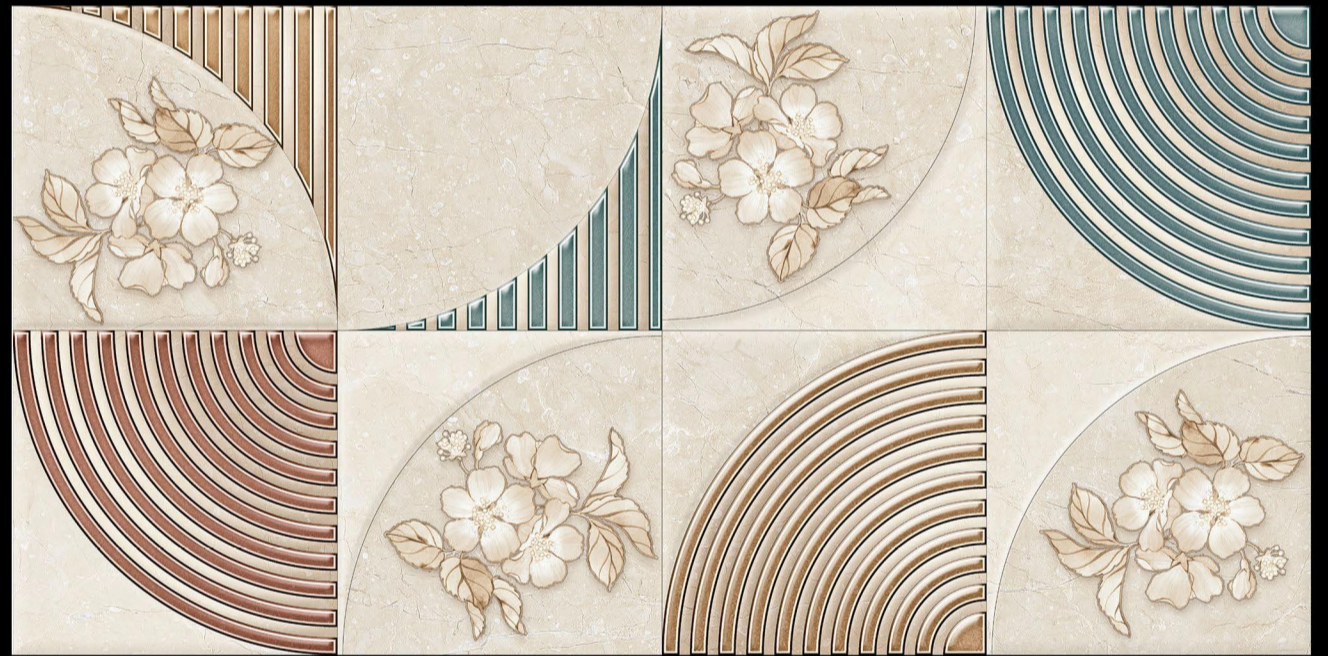
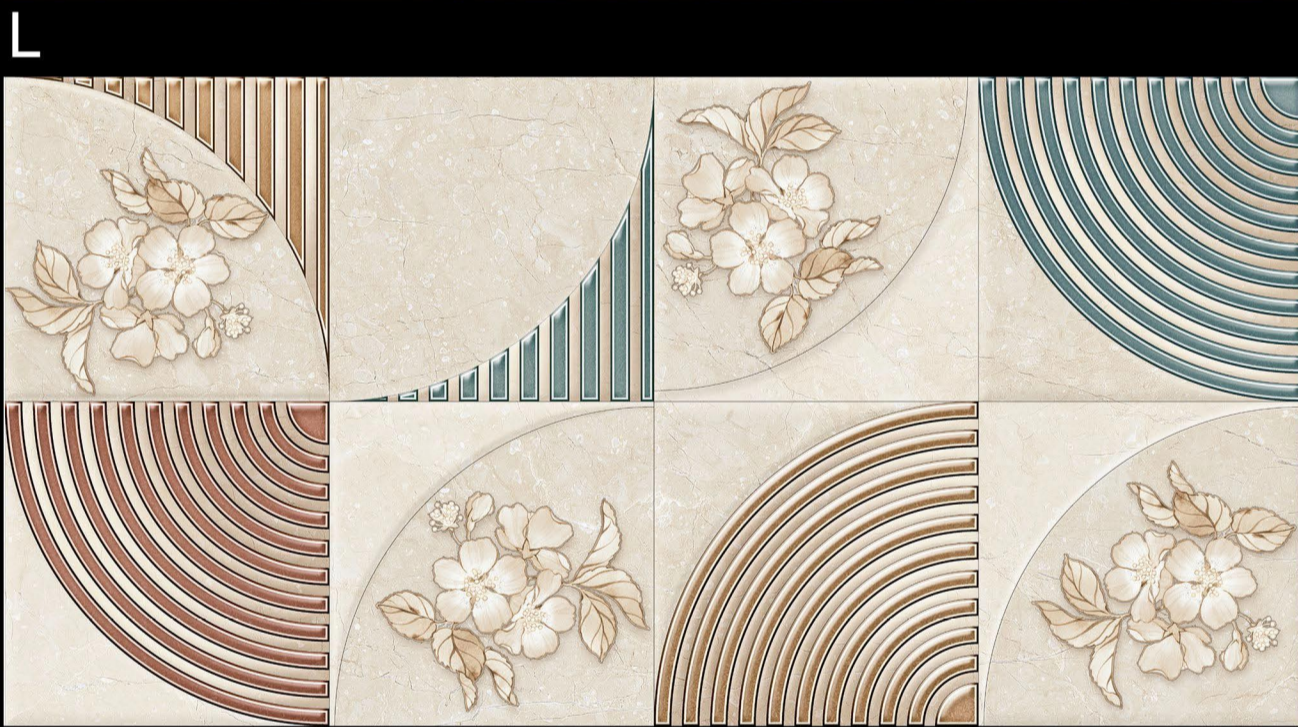


D



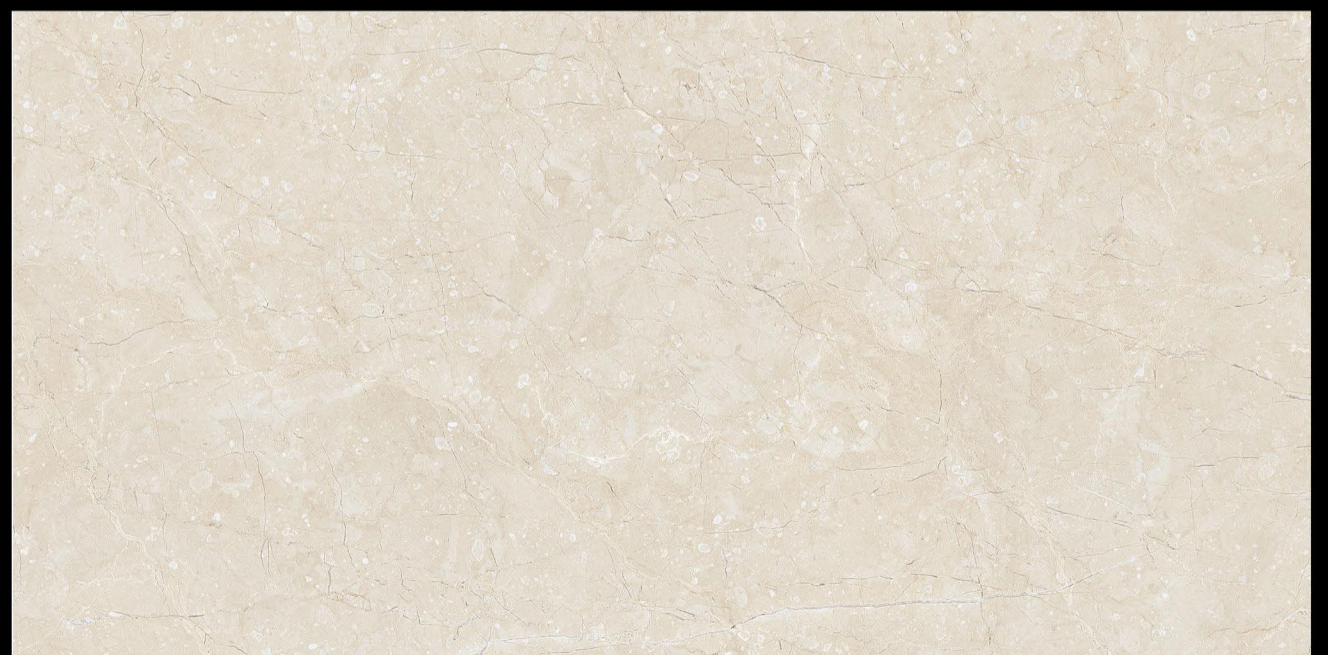
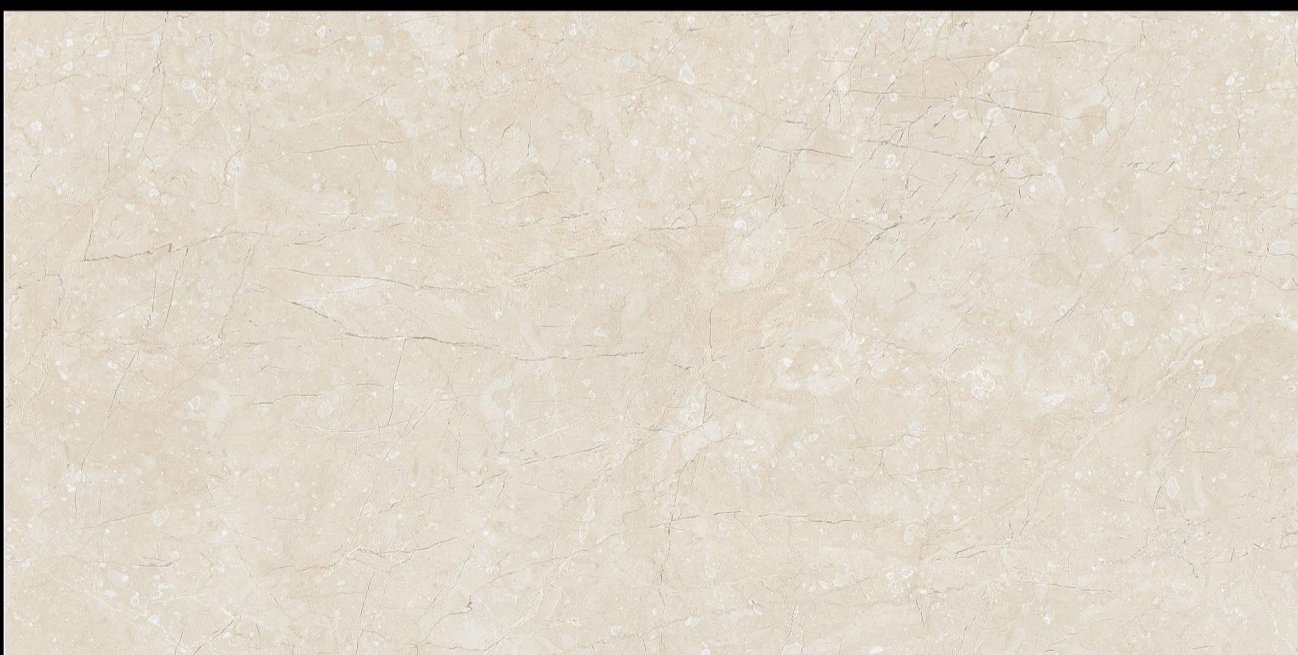
Matt Finish

D.NO - SM-1507



HL-1

HL-1

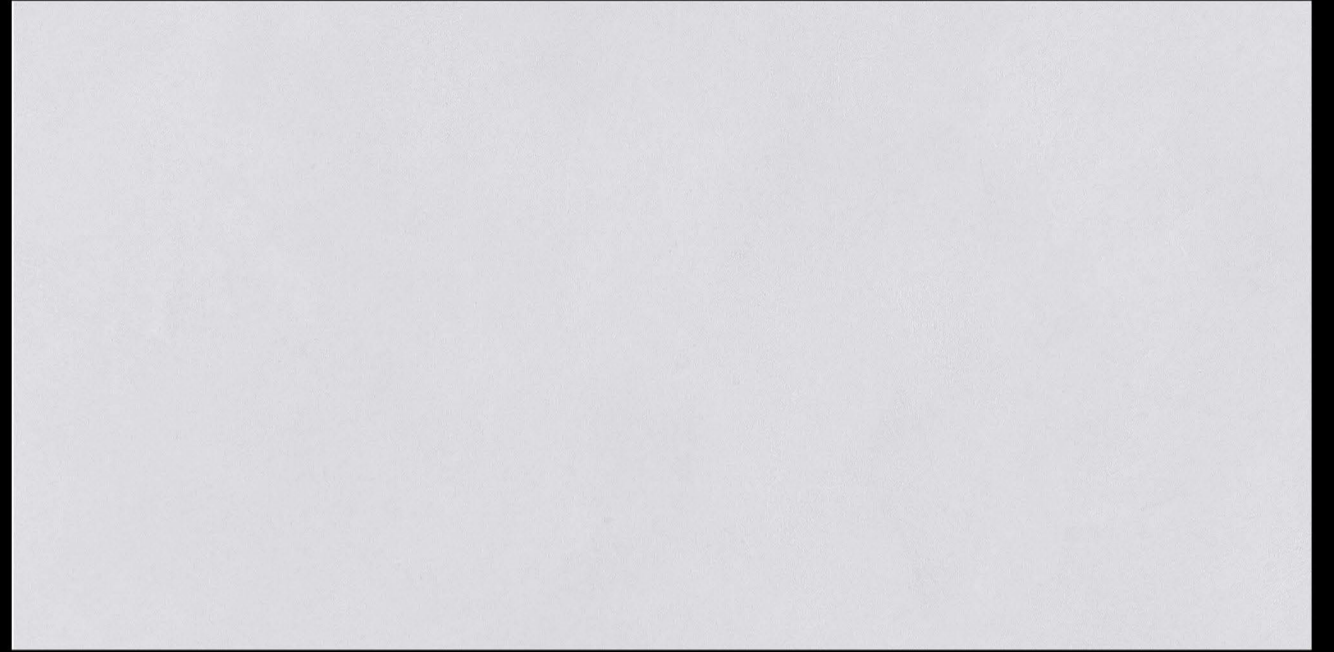


L



Matt Finish

D.NO - SM-1508



L



HL-1

HL-2



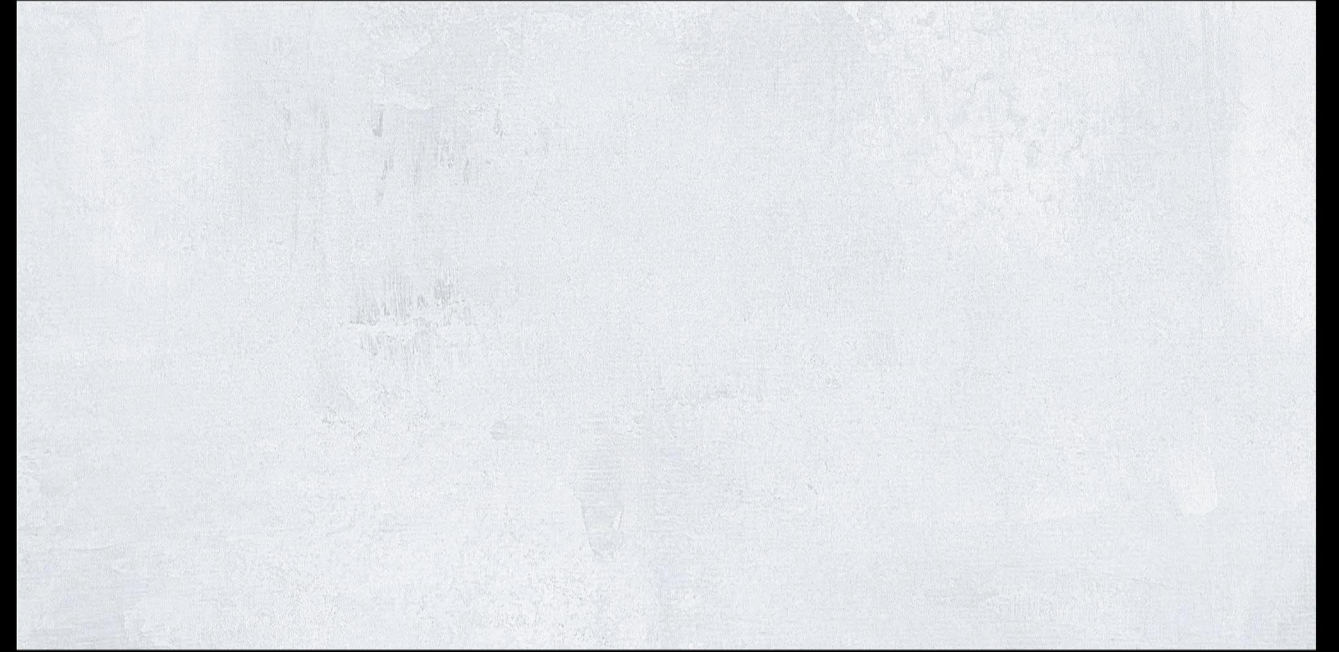
D



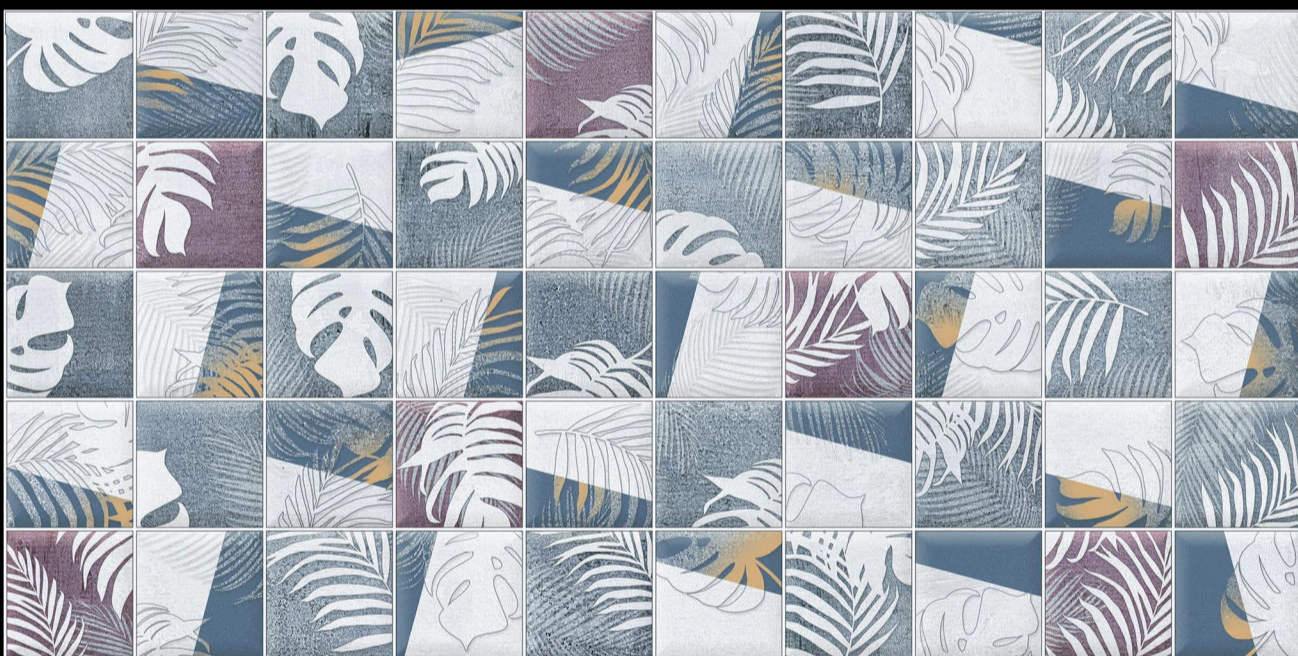


Matt Finish

D.NO - SM-1509



L



HL-1

HL-2



D



Matt Finish

D.NO - SM-1510



L



HL-2

HL-2



D

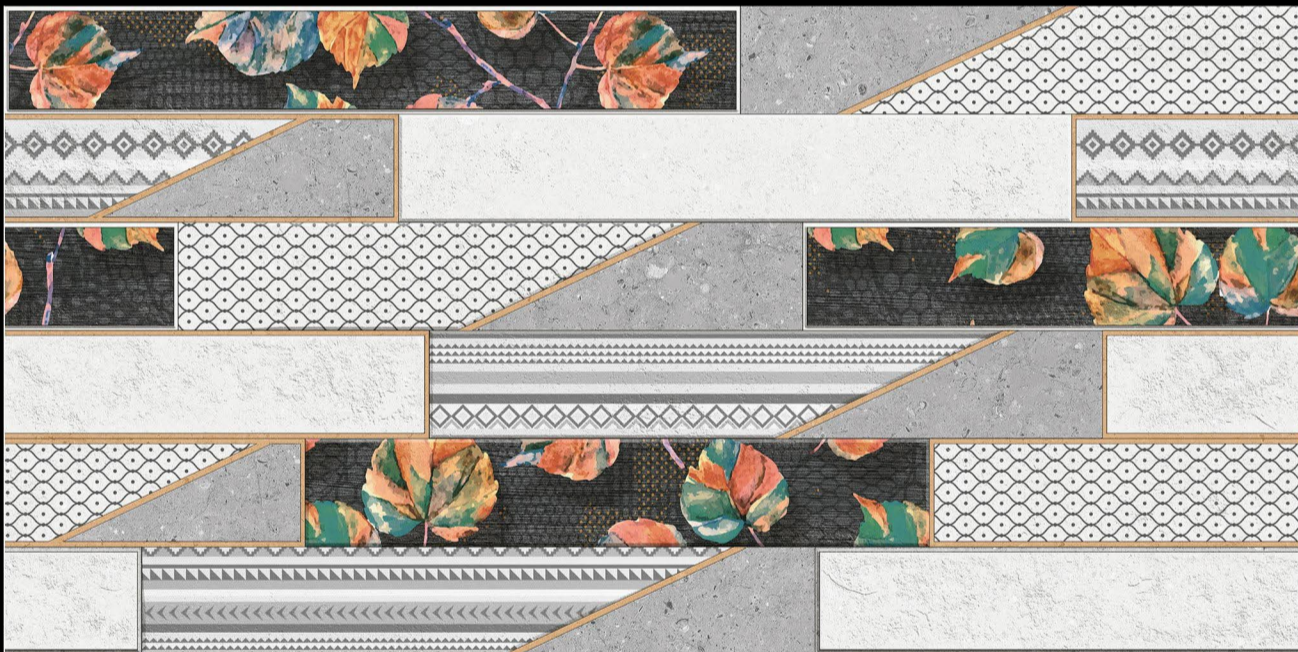


Matt Finish

D.NO - SM-1512

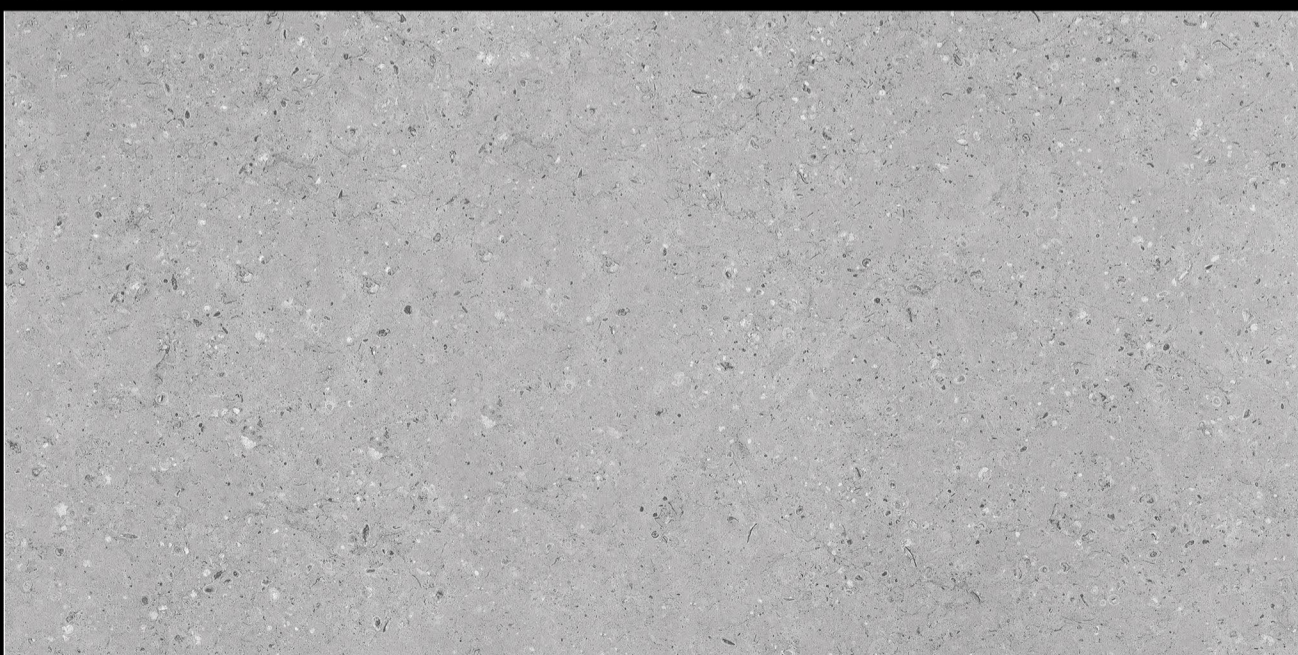


L



HL-1

HL-1



D

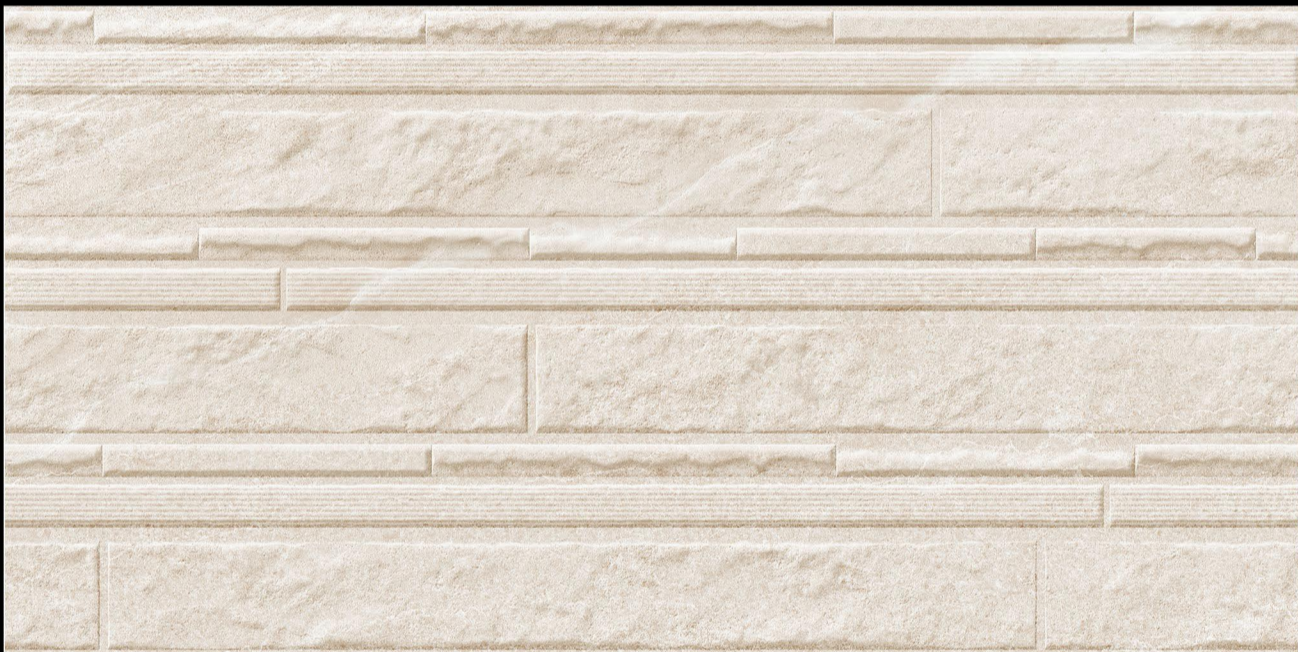


Matt Finish

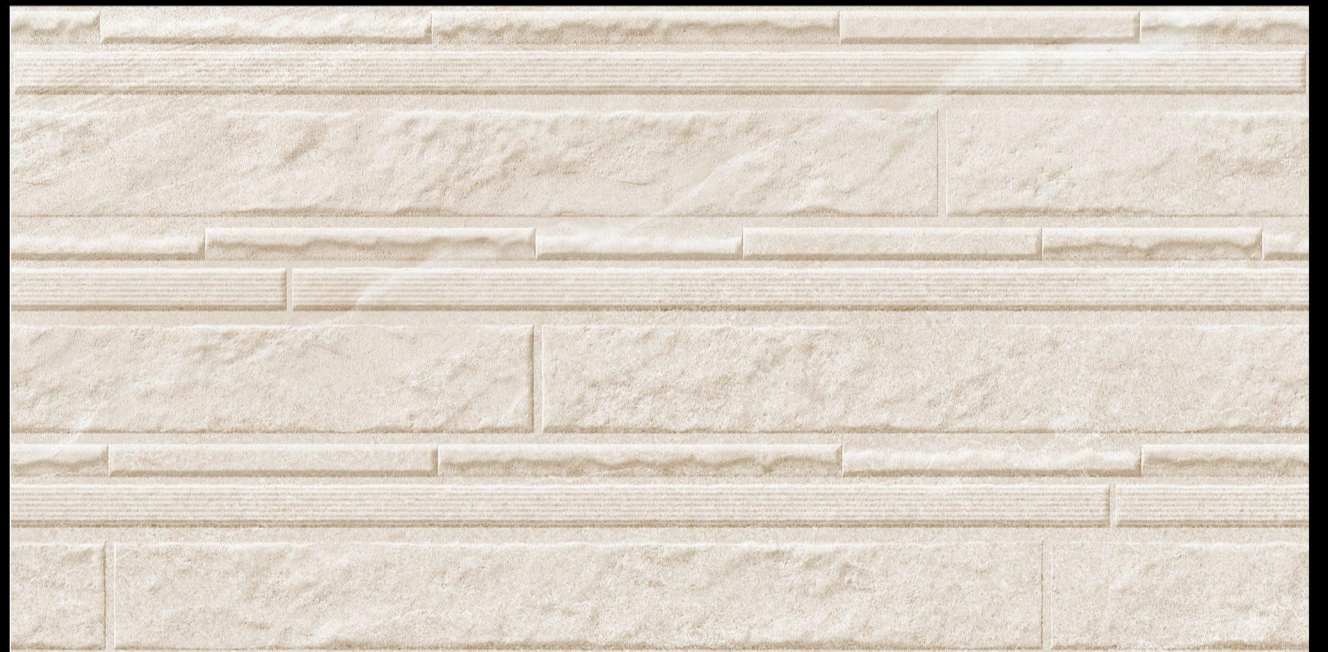
D.NO - SM-1515



L



HL-1



HL-1



L

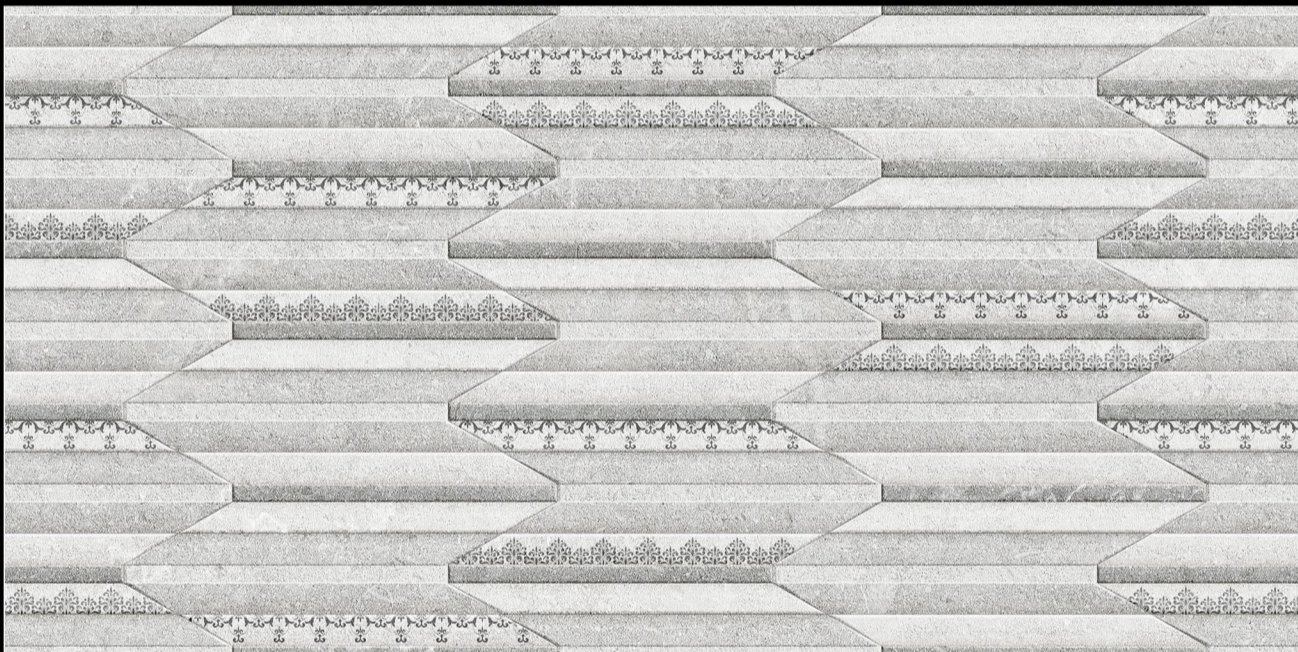


Matt Finish

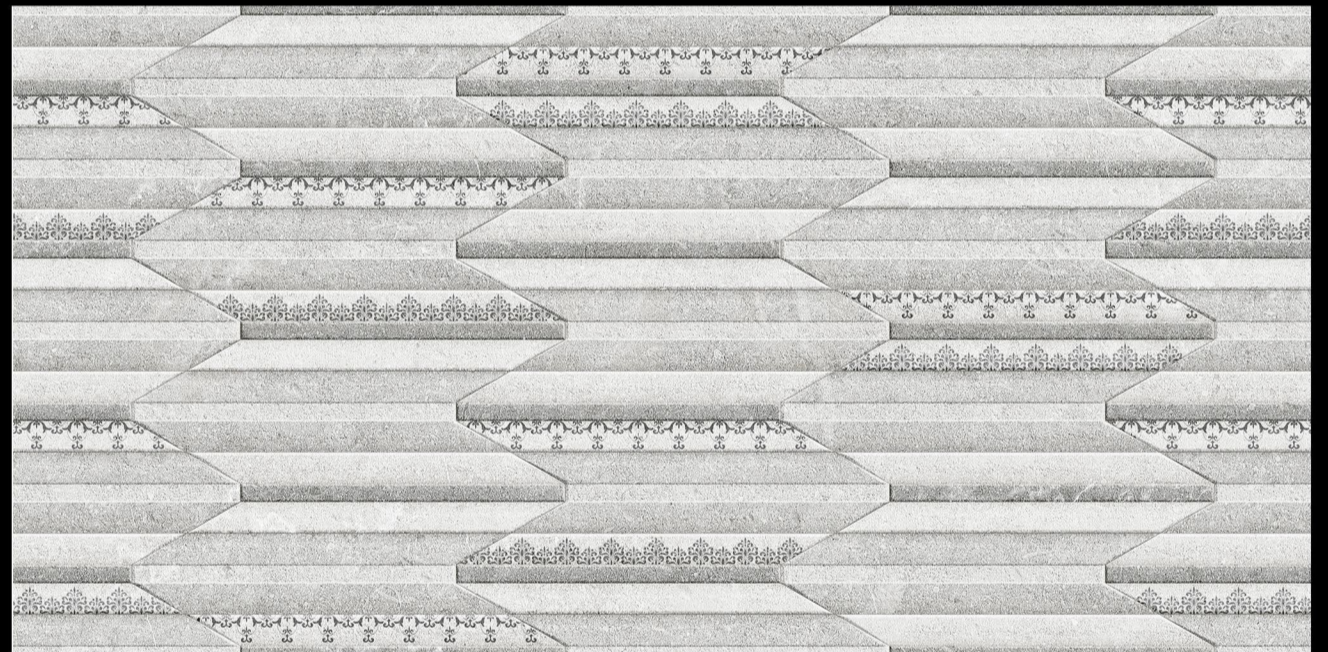
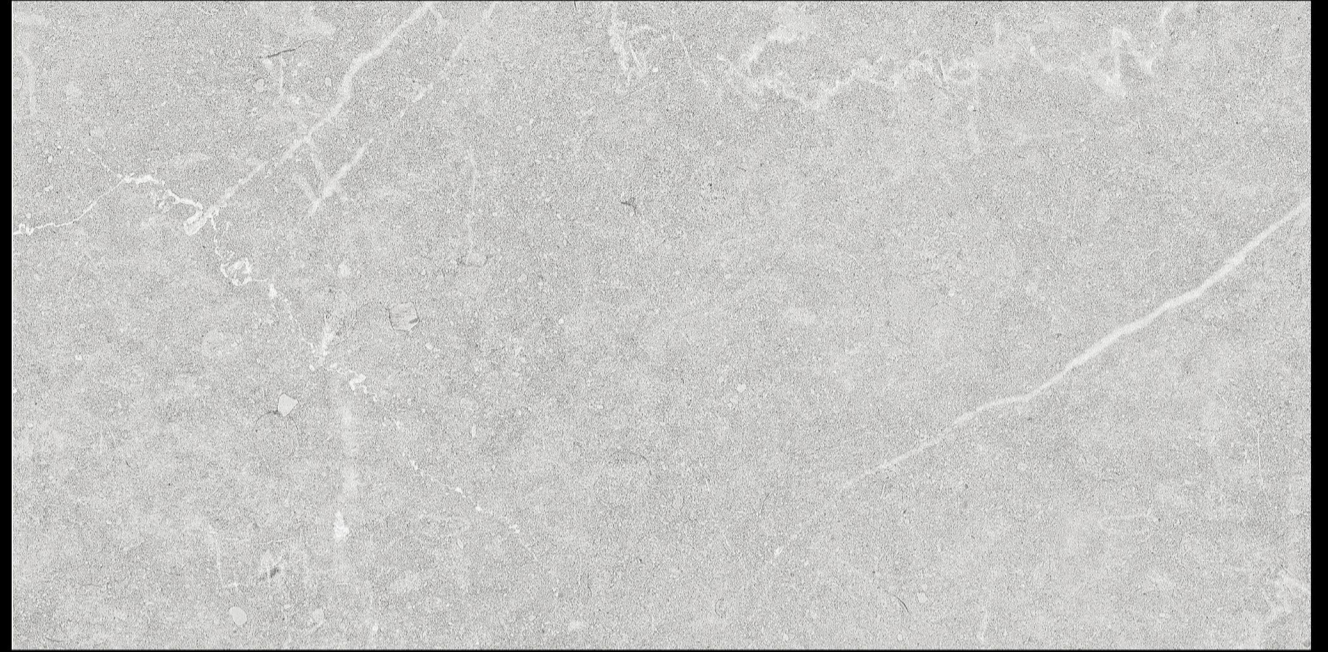
D.NO - SM-1519



L



HL-1



HL-1



L



Matt Finish

D.NO - SM-1520



L



HL-1

HL-1



L

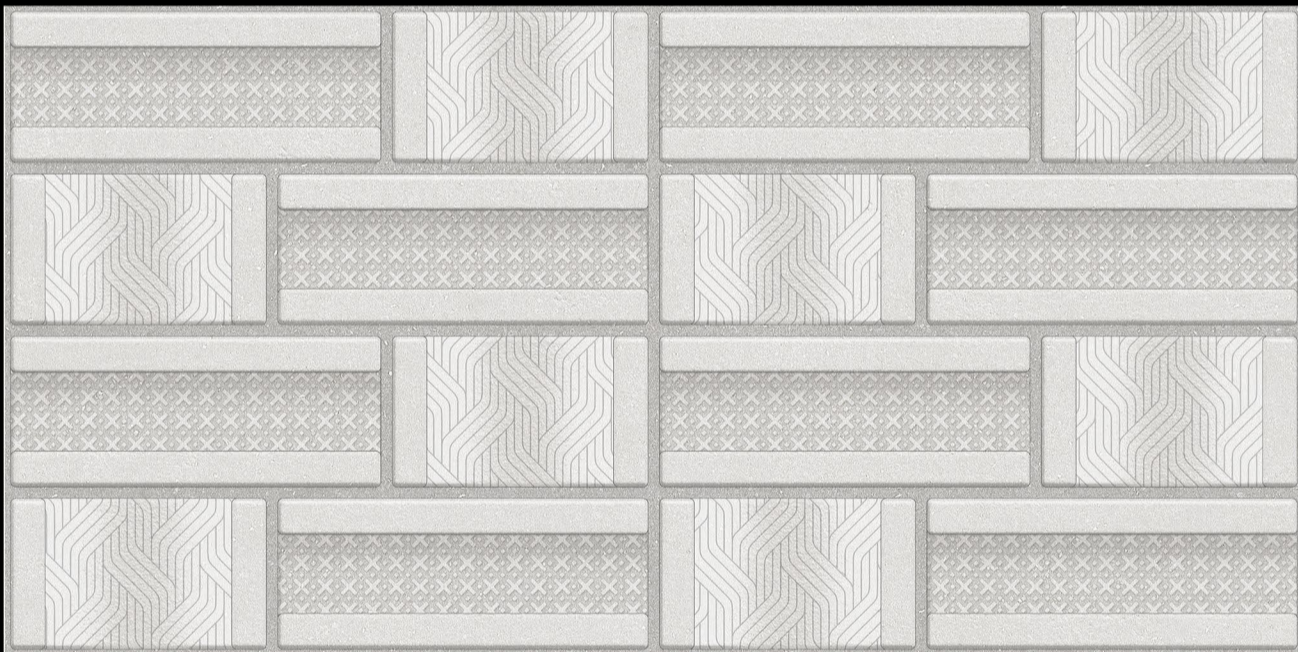


Matt Finish

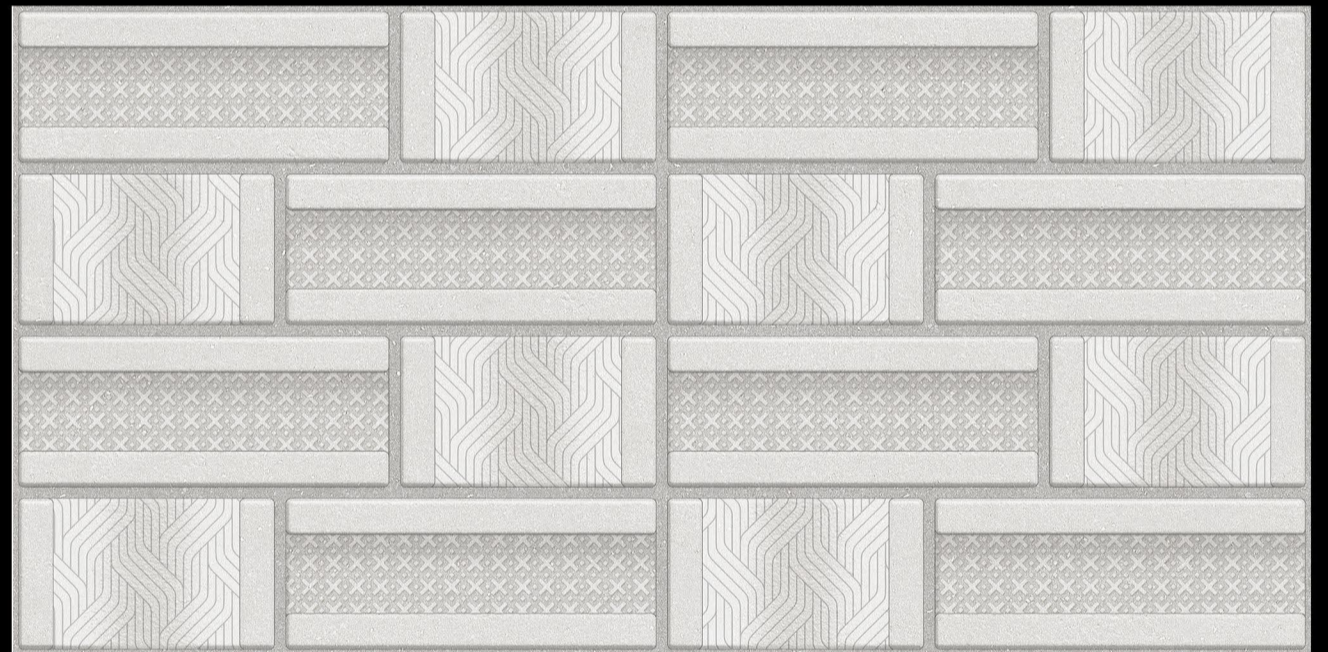
D.NO - SM-1521



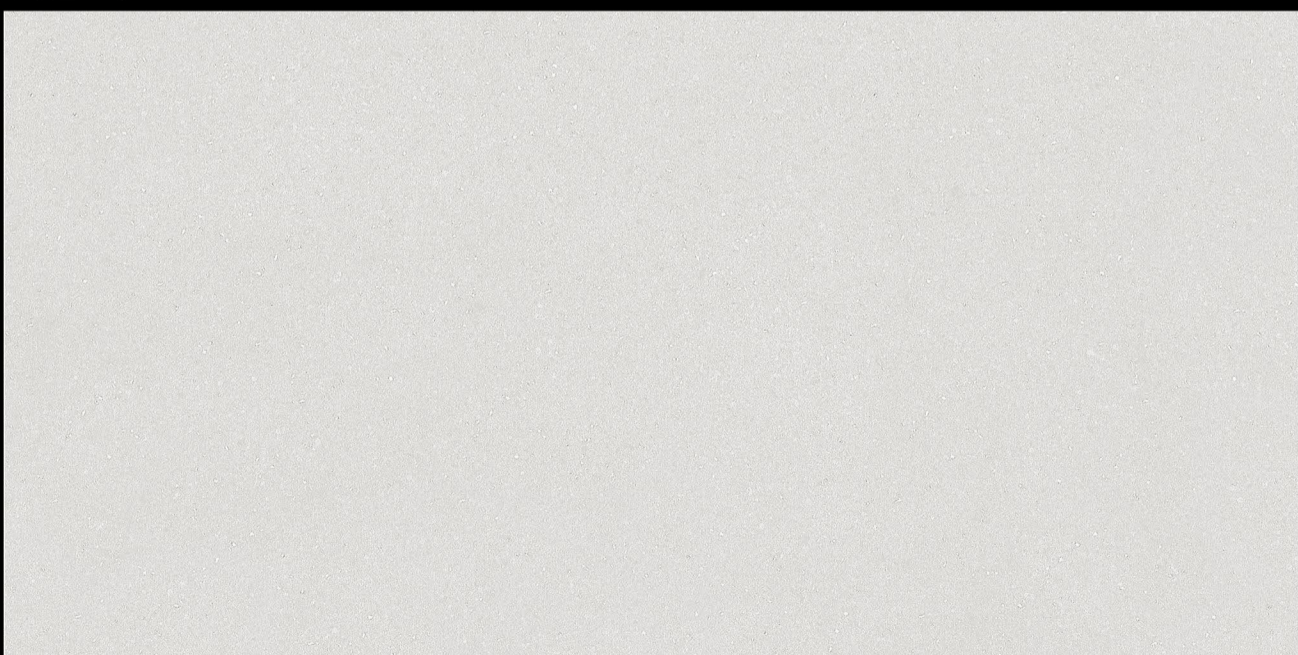
L



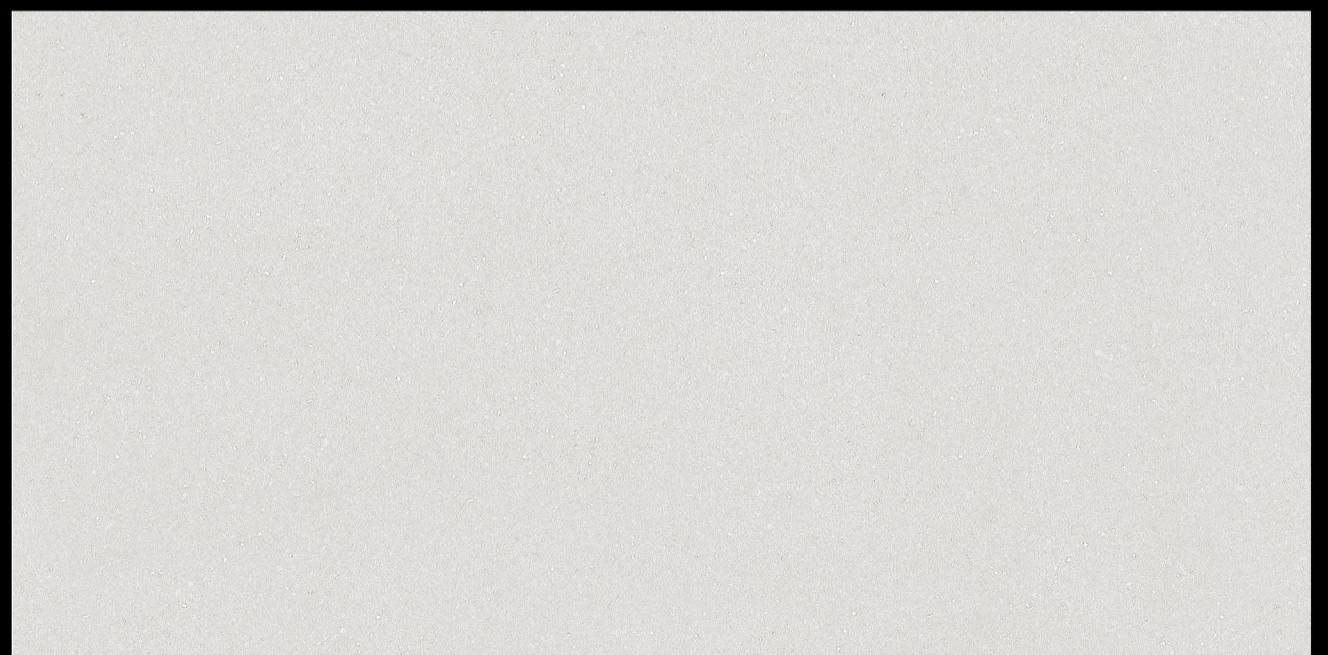
HL-1



HL-1



L

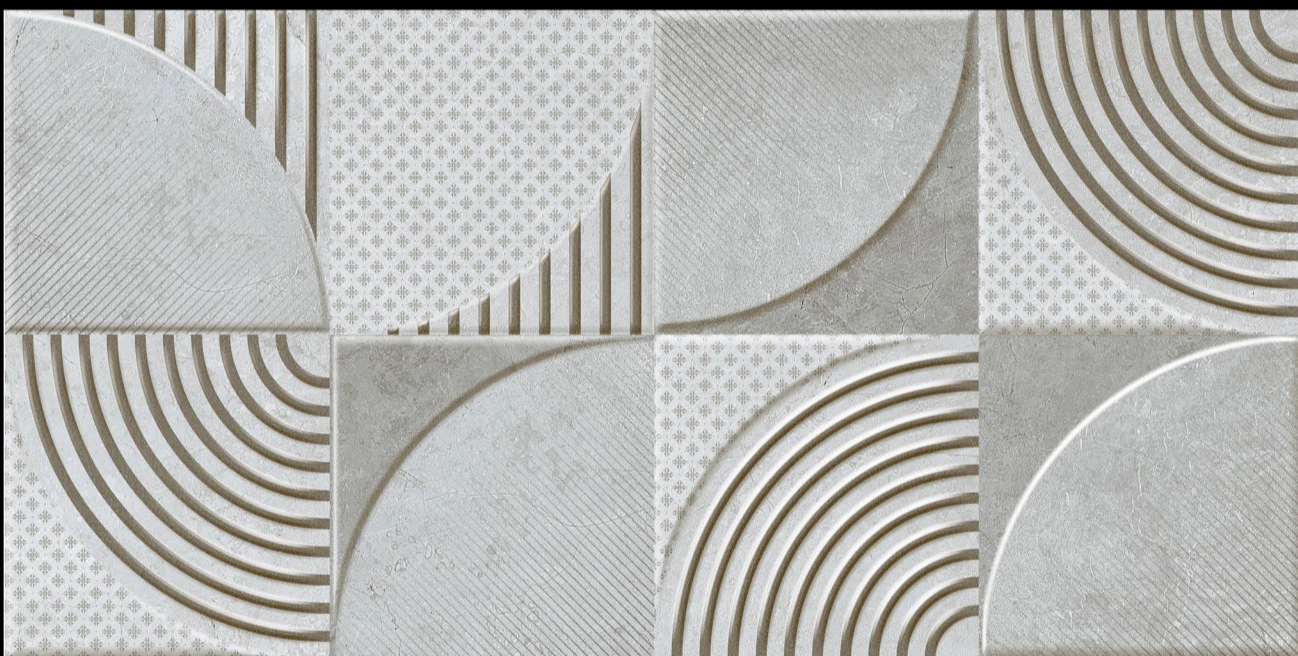


Matt Finish

D.NO - SM-1524



L



HL-1



HL-1



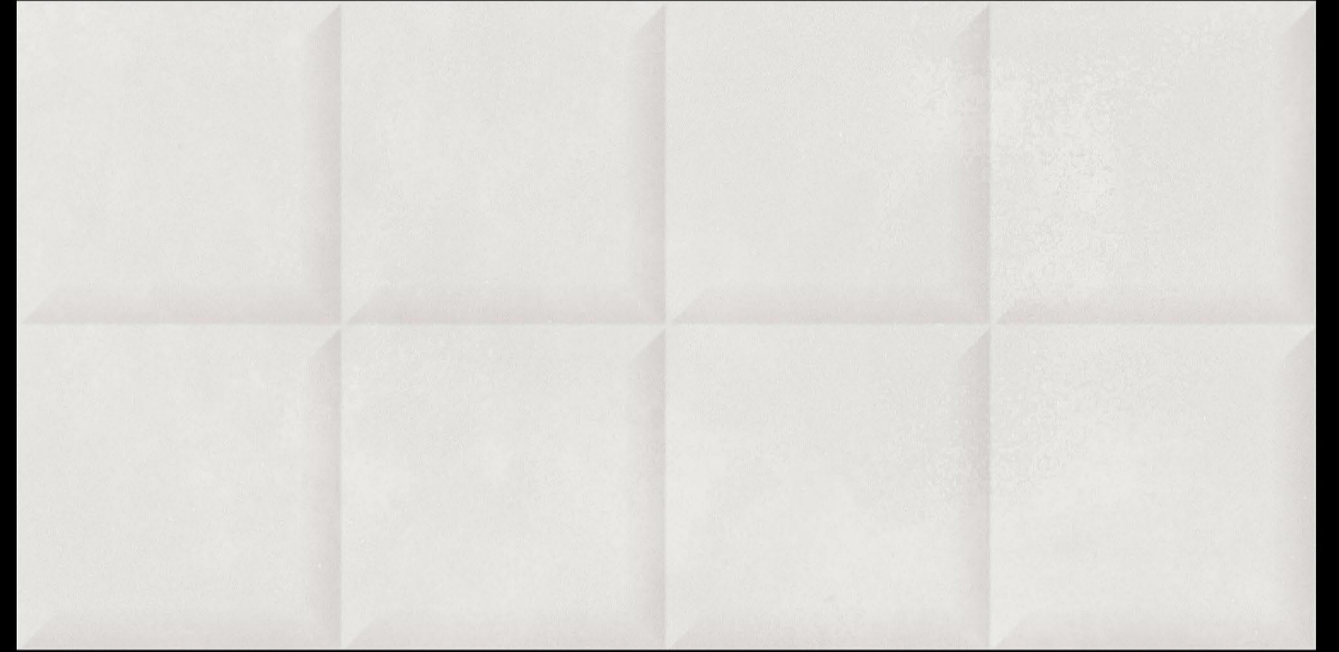
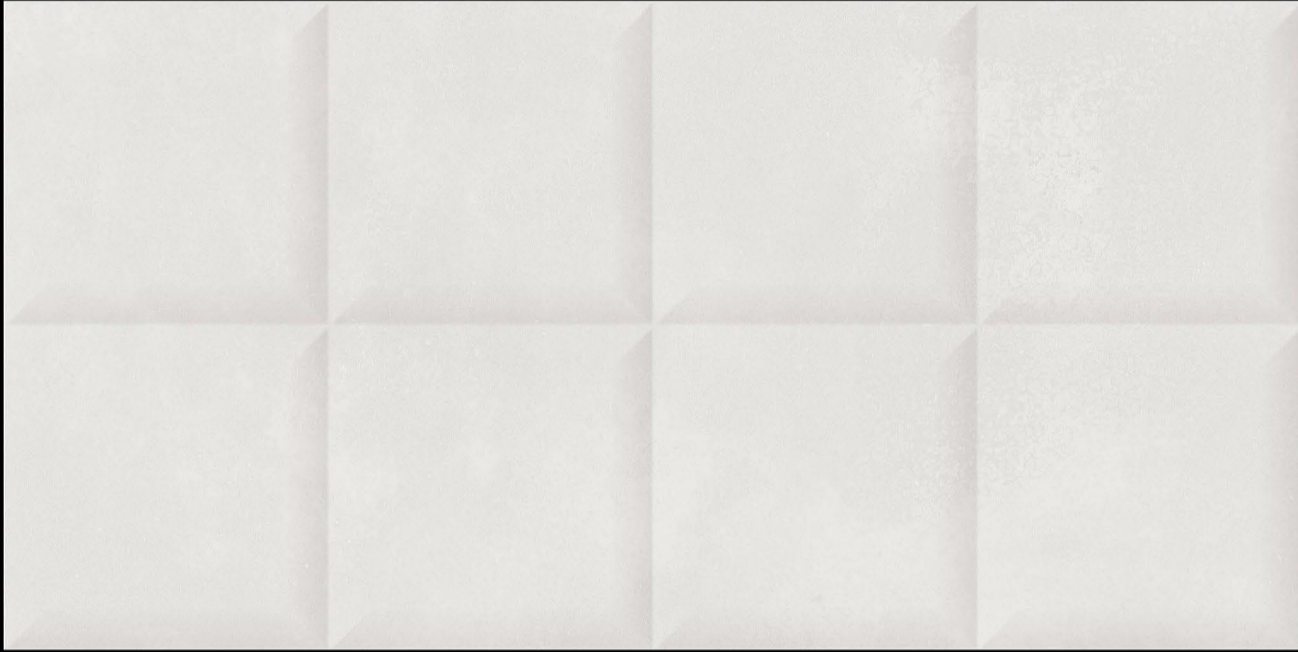
L



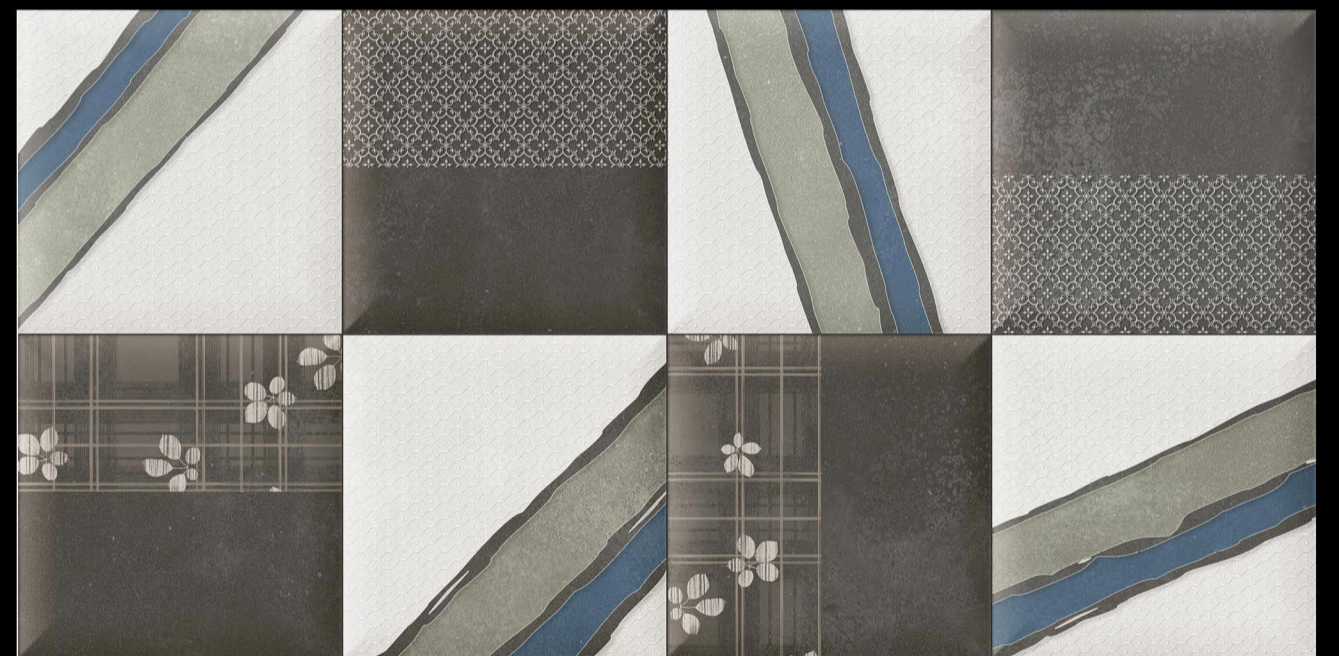
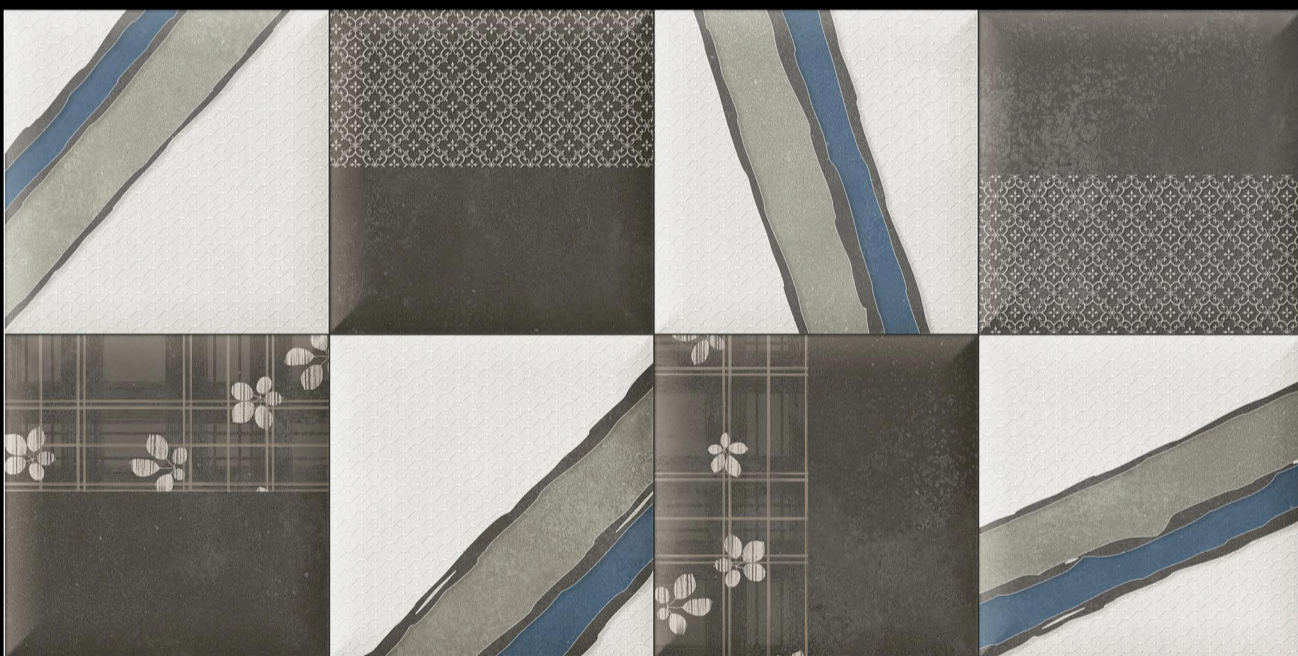


Matt Finish

D.NO - SM-1526

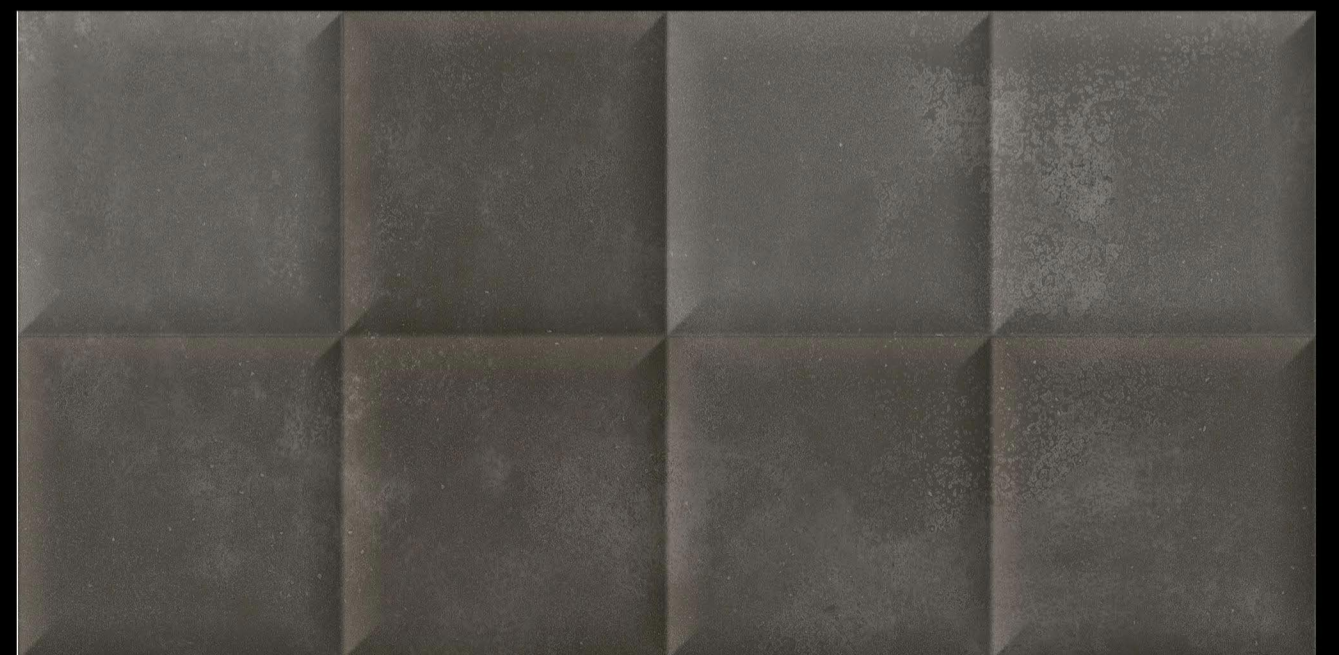
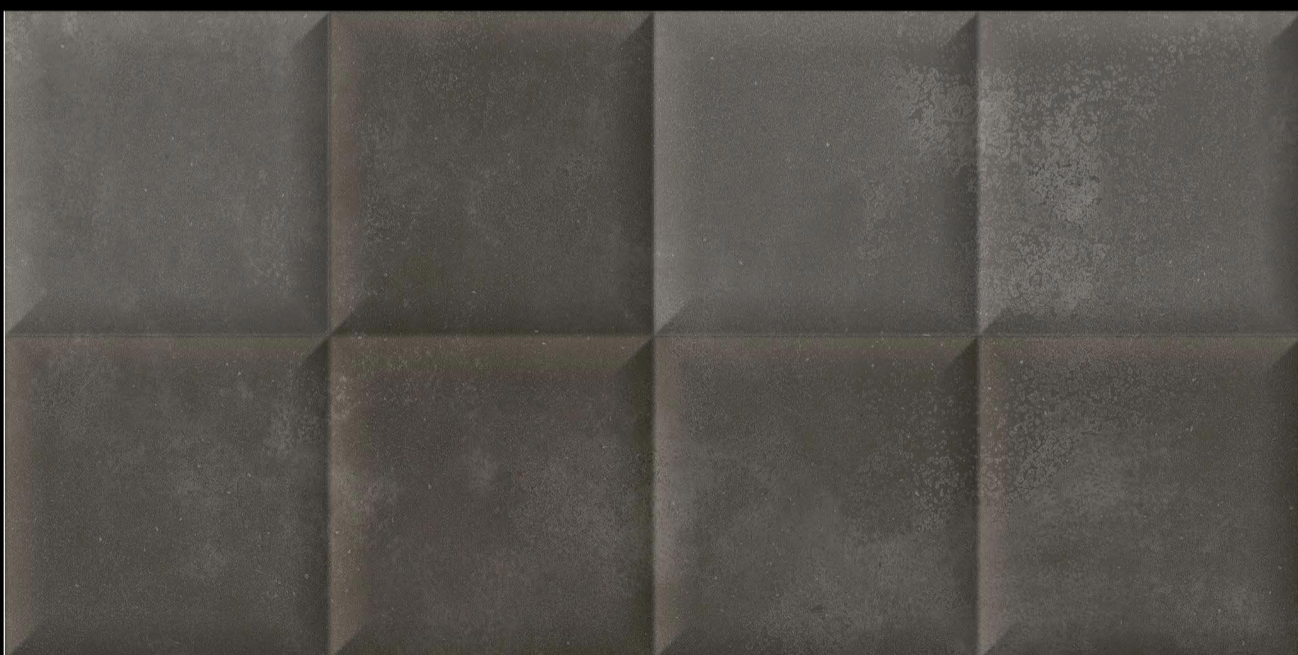


L



HL-1

HL-1



D

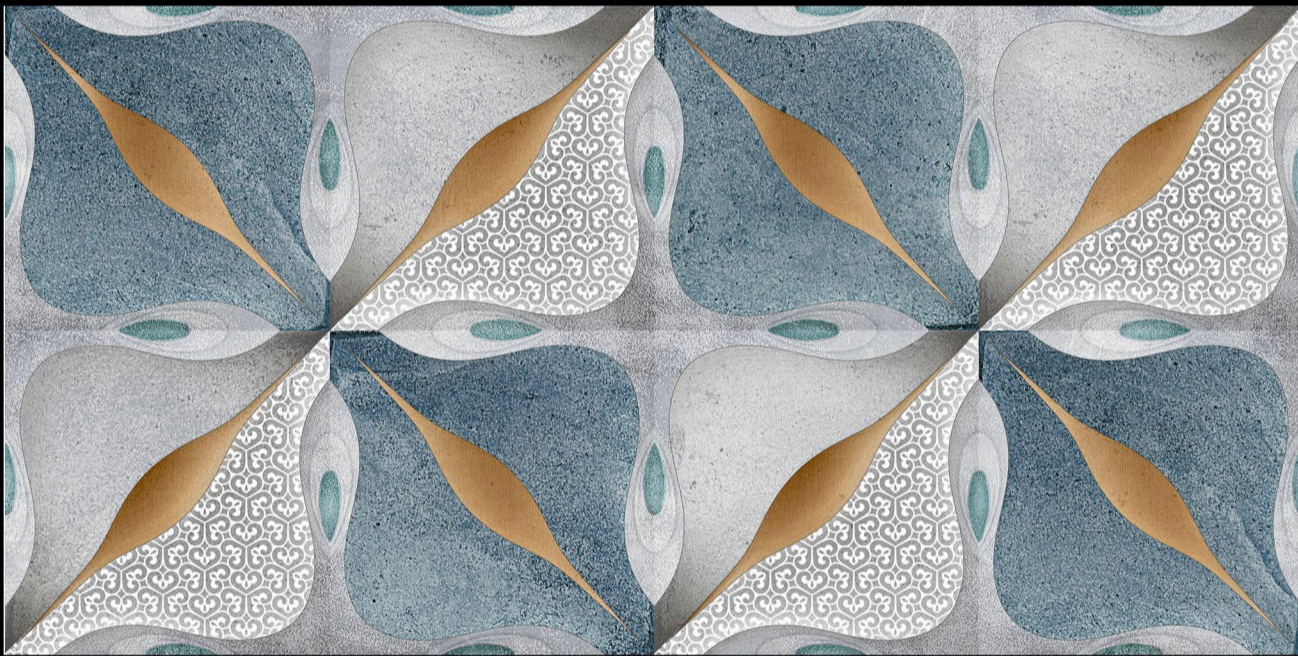


Matt Finish

D.NO - SM-1527



L



HL-1

HL-2

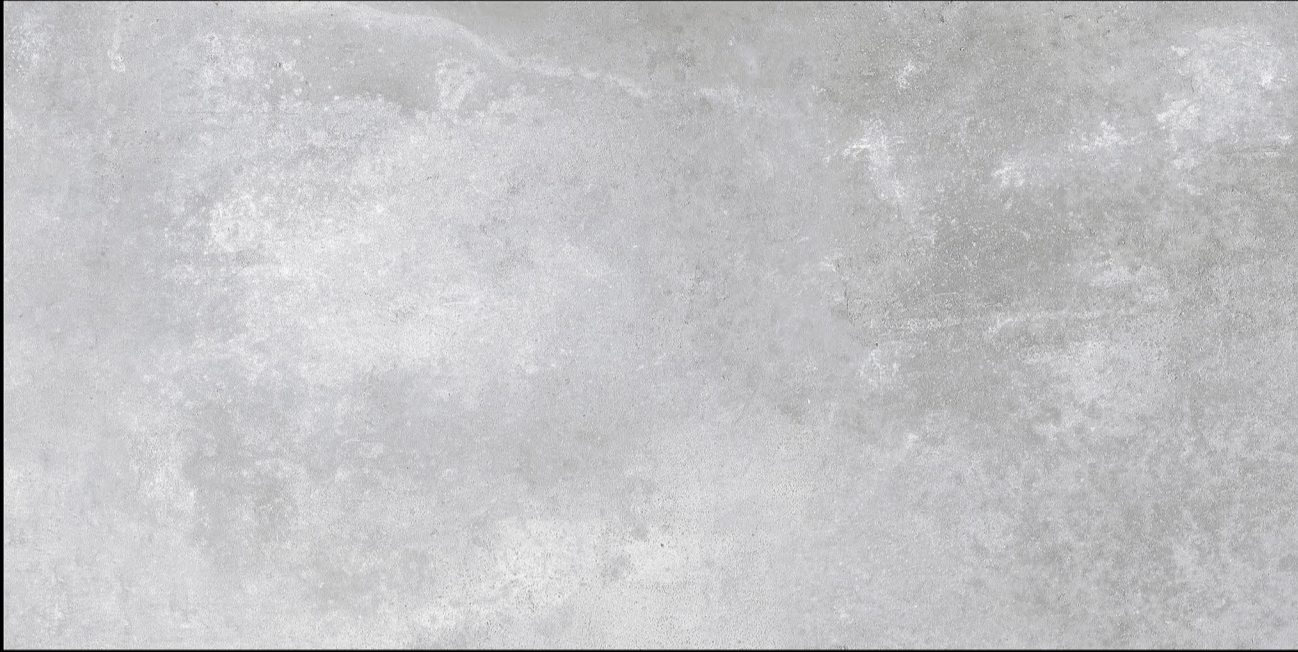


D

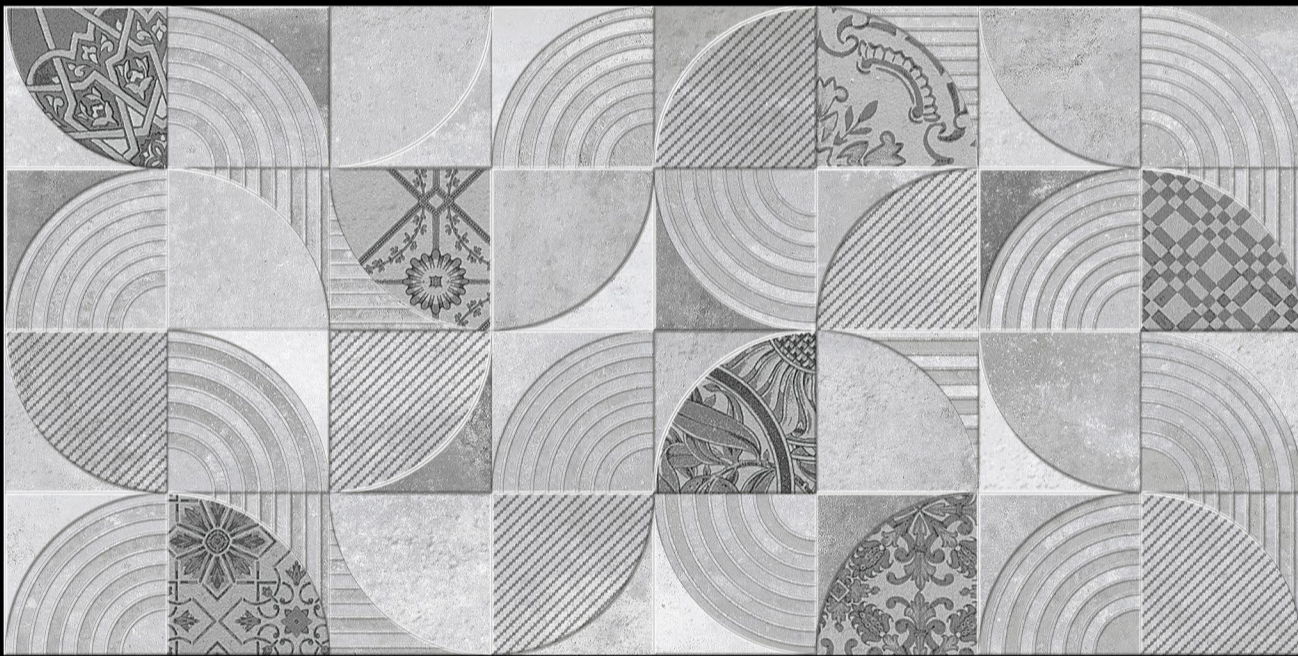


Matt Finish

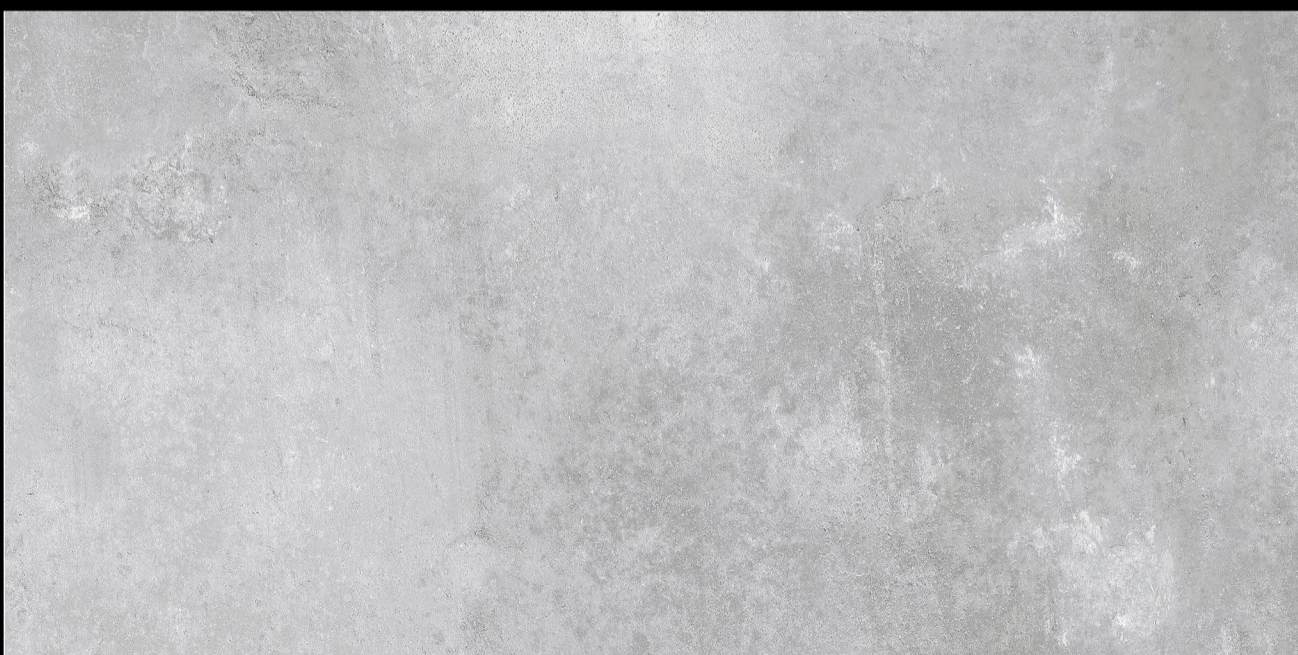
D.NO - SM-1528



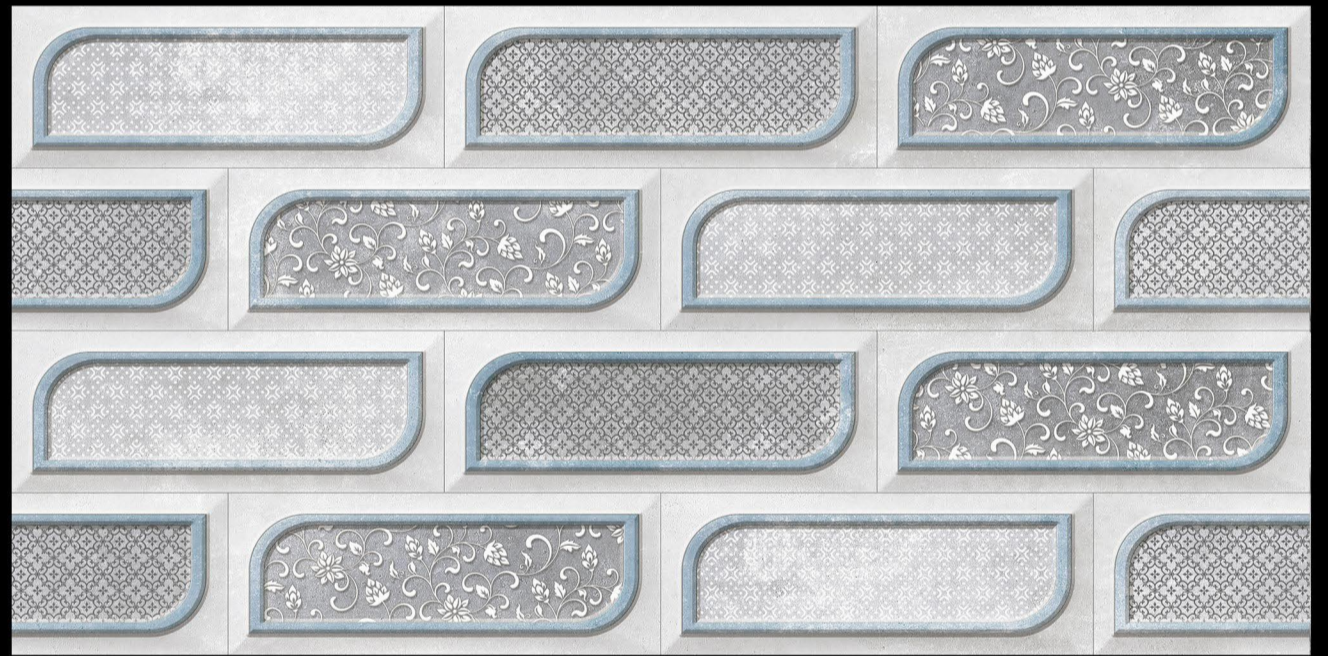
L



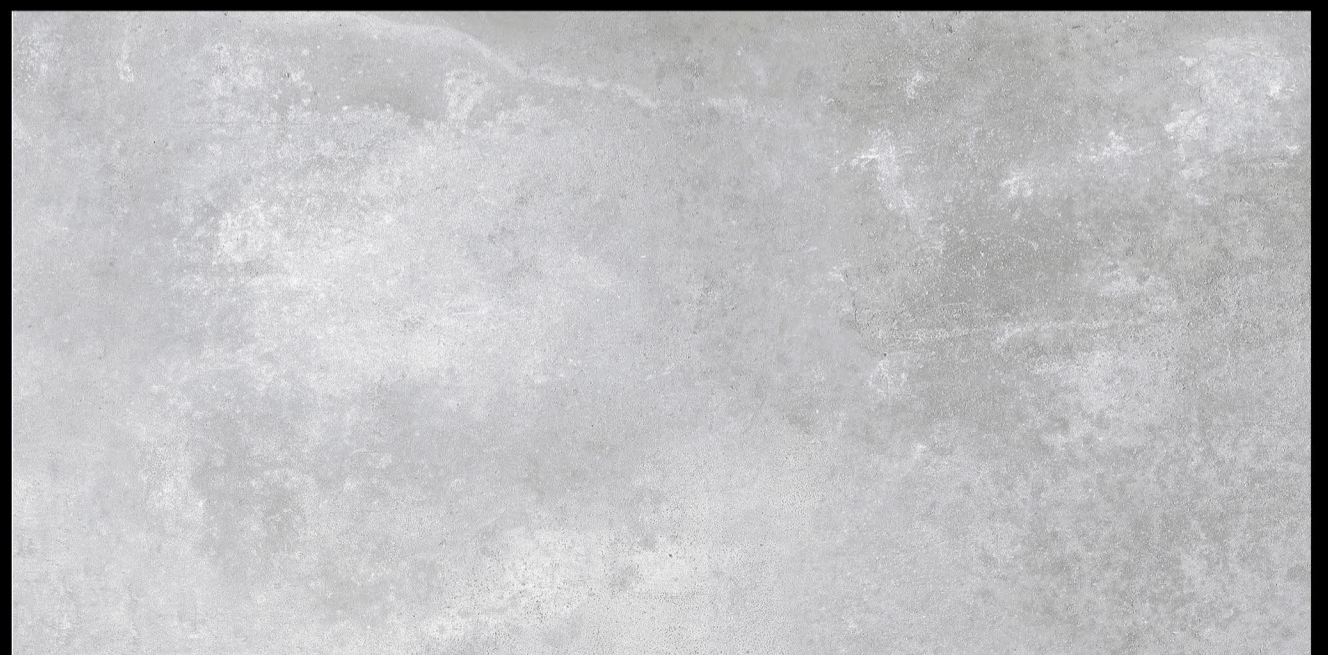
HL-1



L



HL-2



Matt Finish

D.NO - SM-1529



L



HL-1



D



HL-1



Matt Finish

D.NO - SM-1530



L



HL-1

HL-1

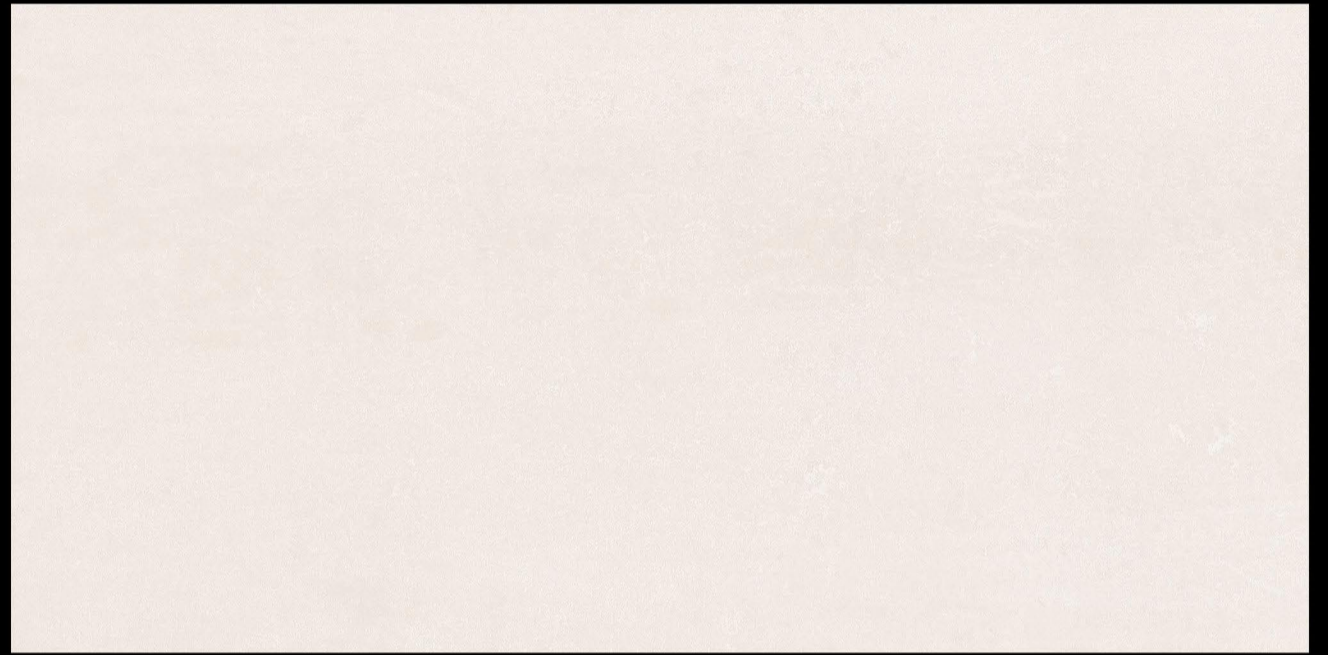
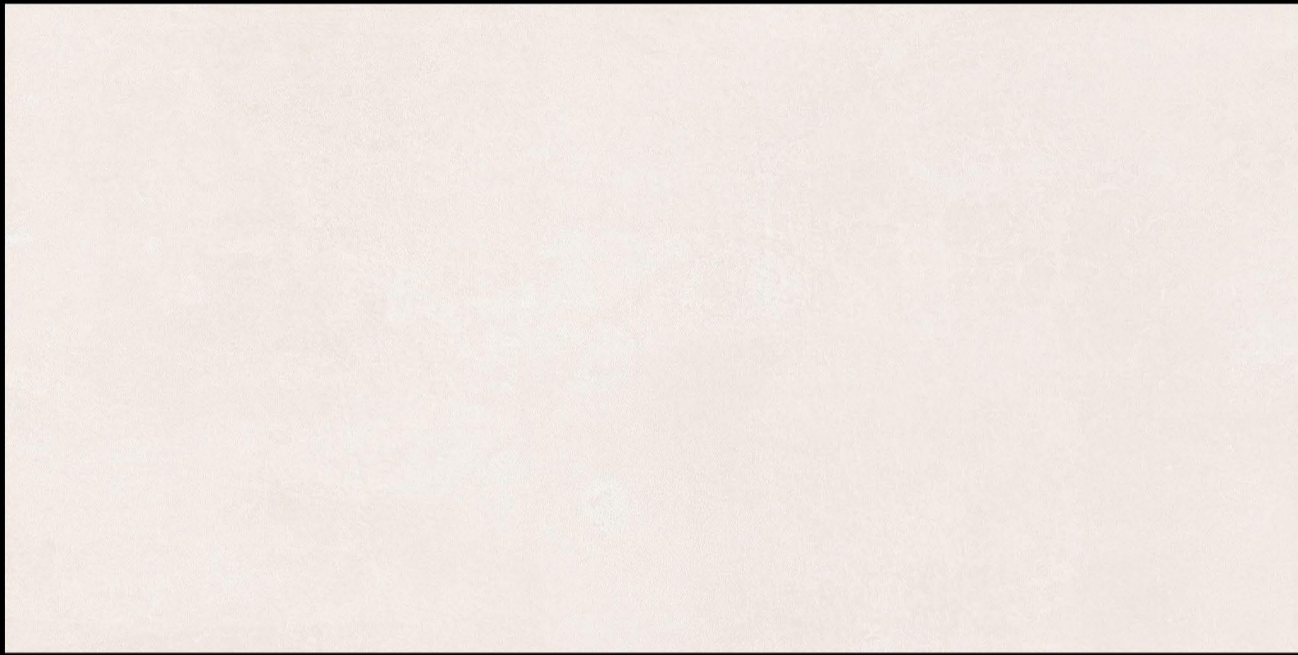


D



Matt Finish

D.NO - SM-1531



L



HL-1

HL-1



D



Matt Finish

D.NO - SM-1533



L



HL-1

HL-1



D

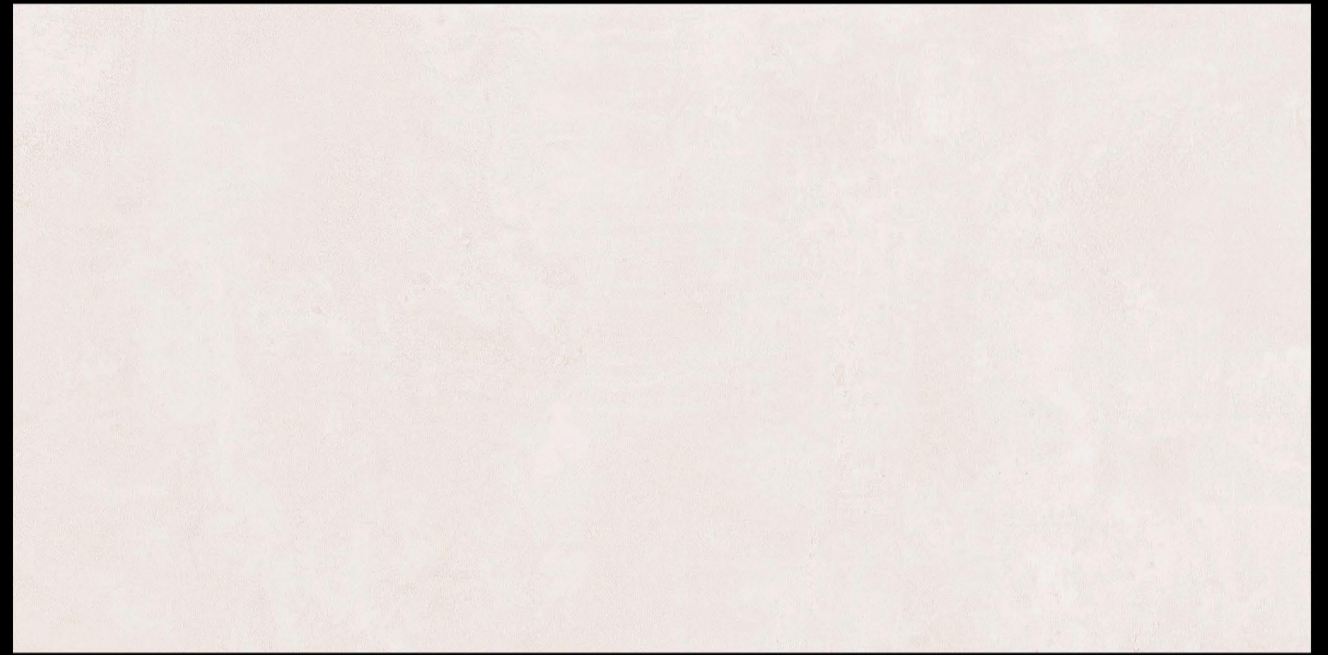
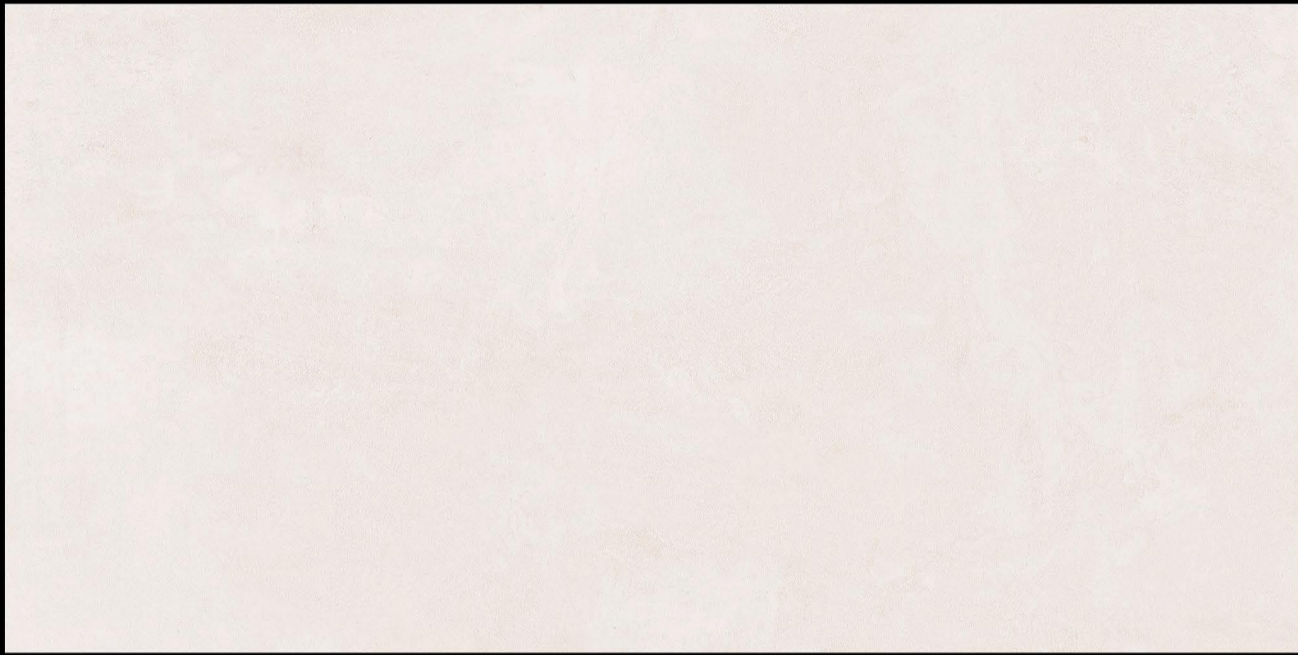
*digital wall tiles*

300 x 600 mm



Matt Finish

D.NO - SM-1535

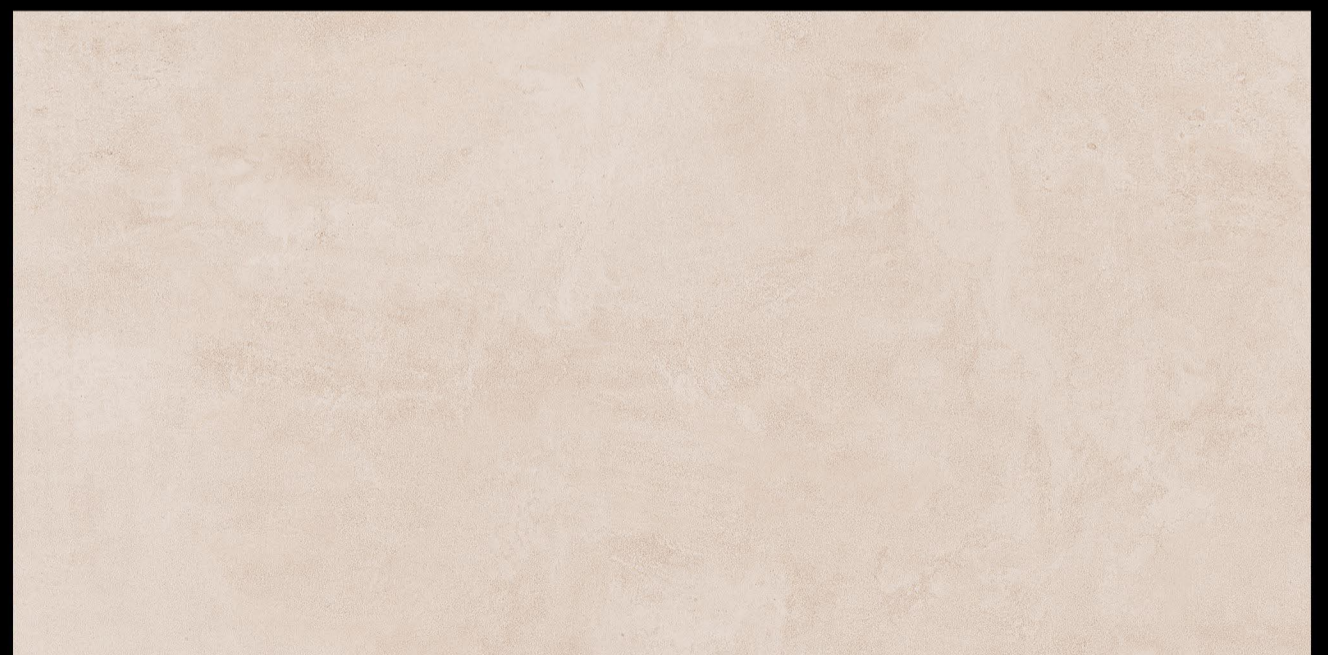
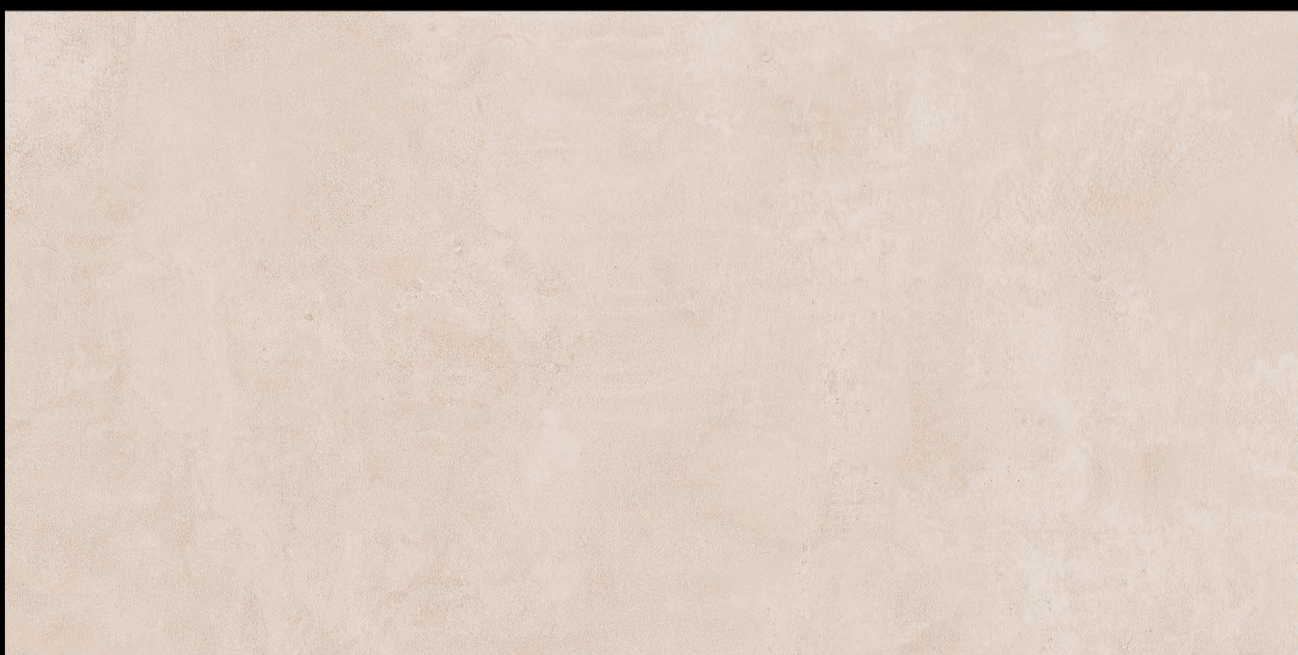


L



HL-1

HL-1



D





Matt Finish

D.NO - SM-1544



L



HL-1

HL-1

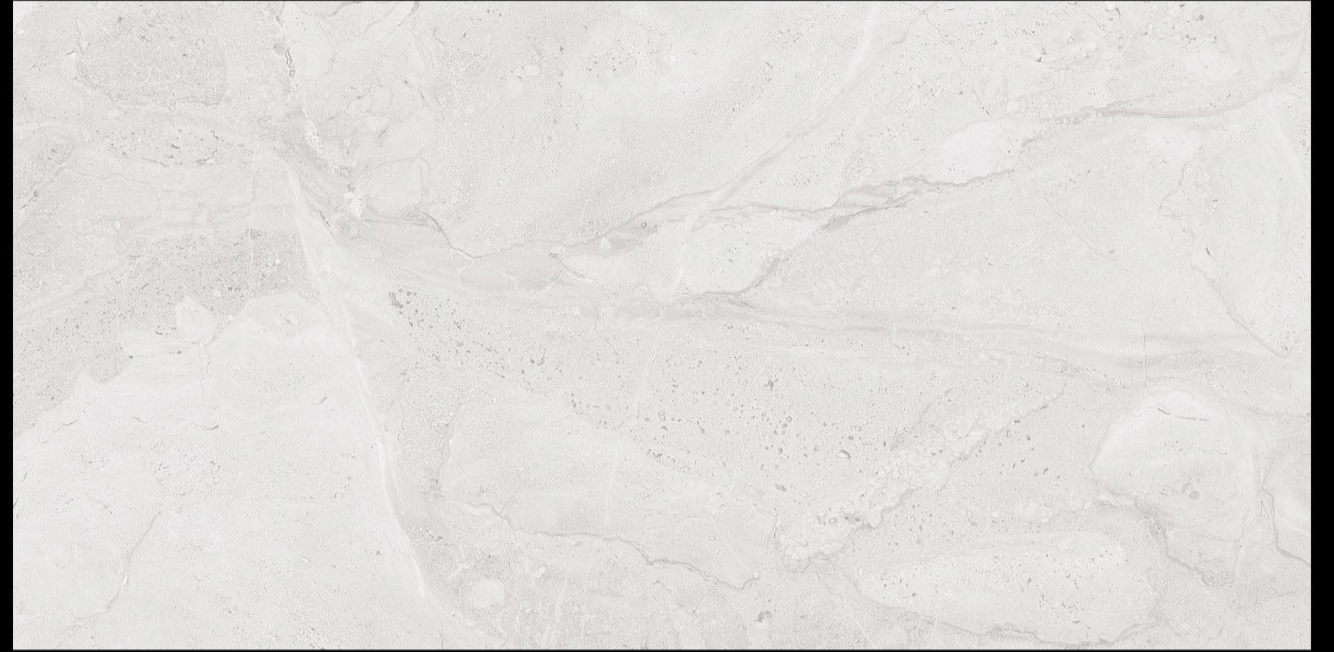
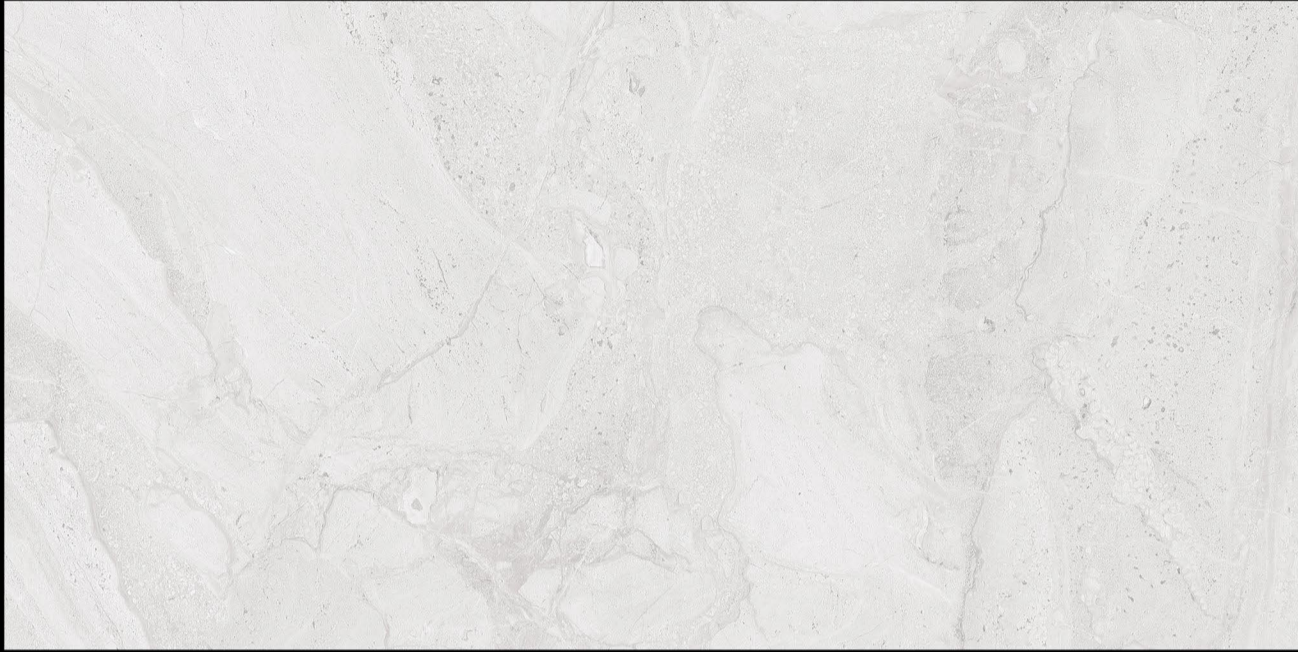


D

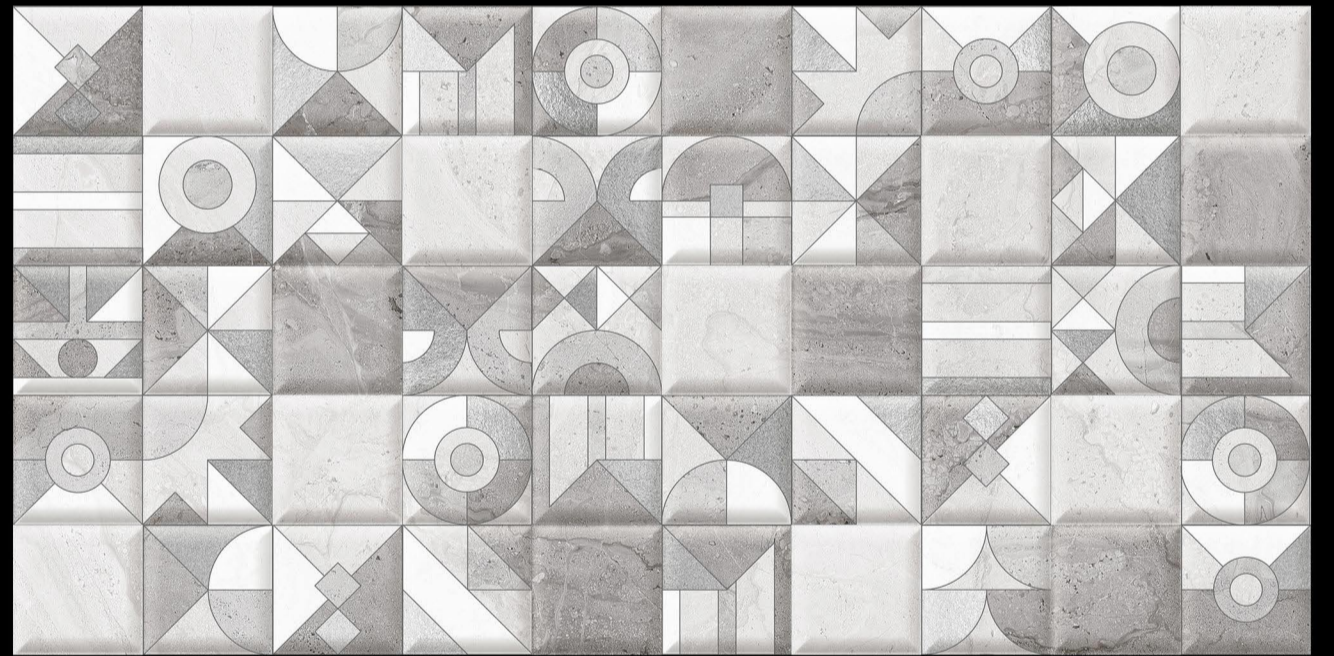


Matt Finish

D.NO - SM-1550



L



HL-1

HL-2



D



Matt Finish

D.NO - SM-1553



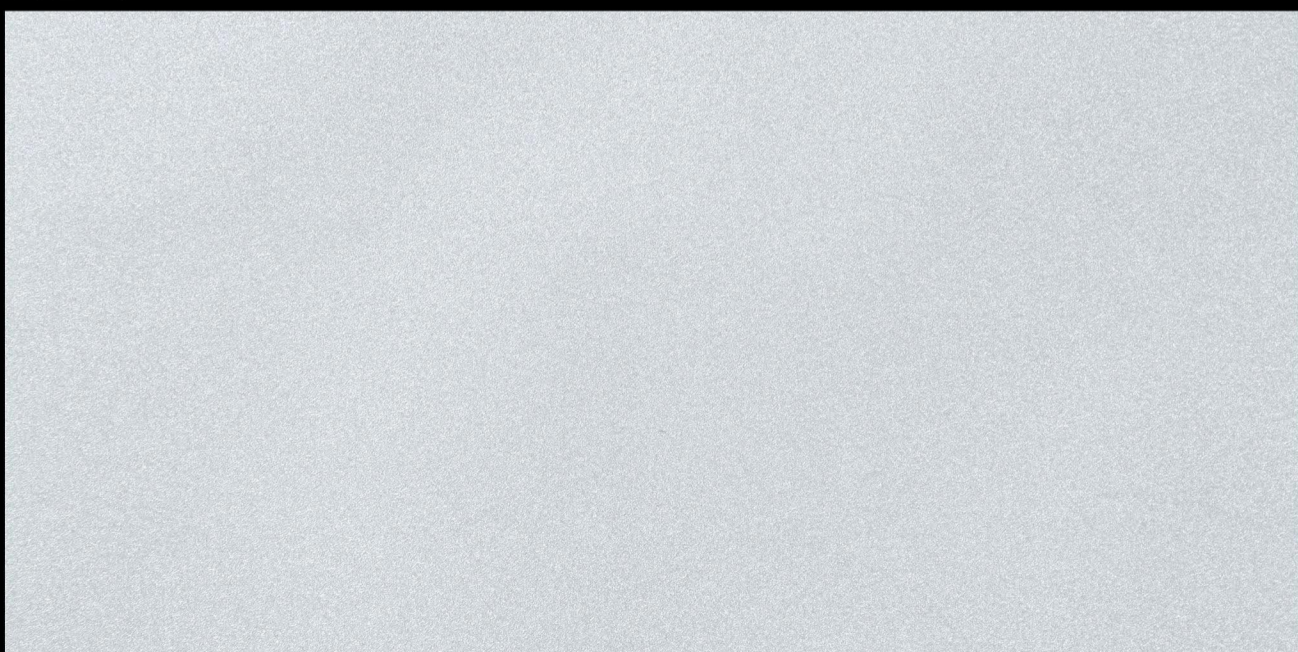
L



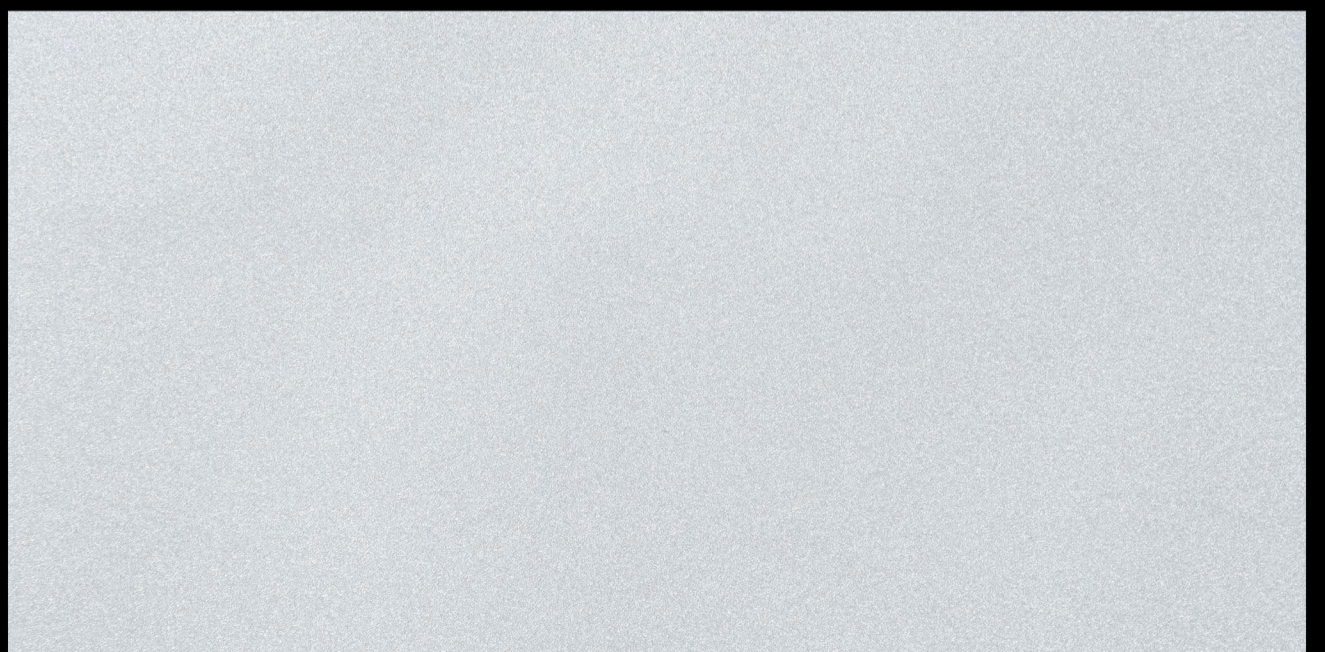
HL-1



HL-1



L

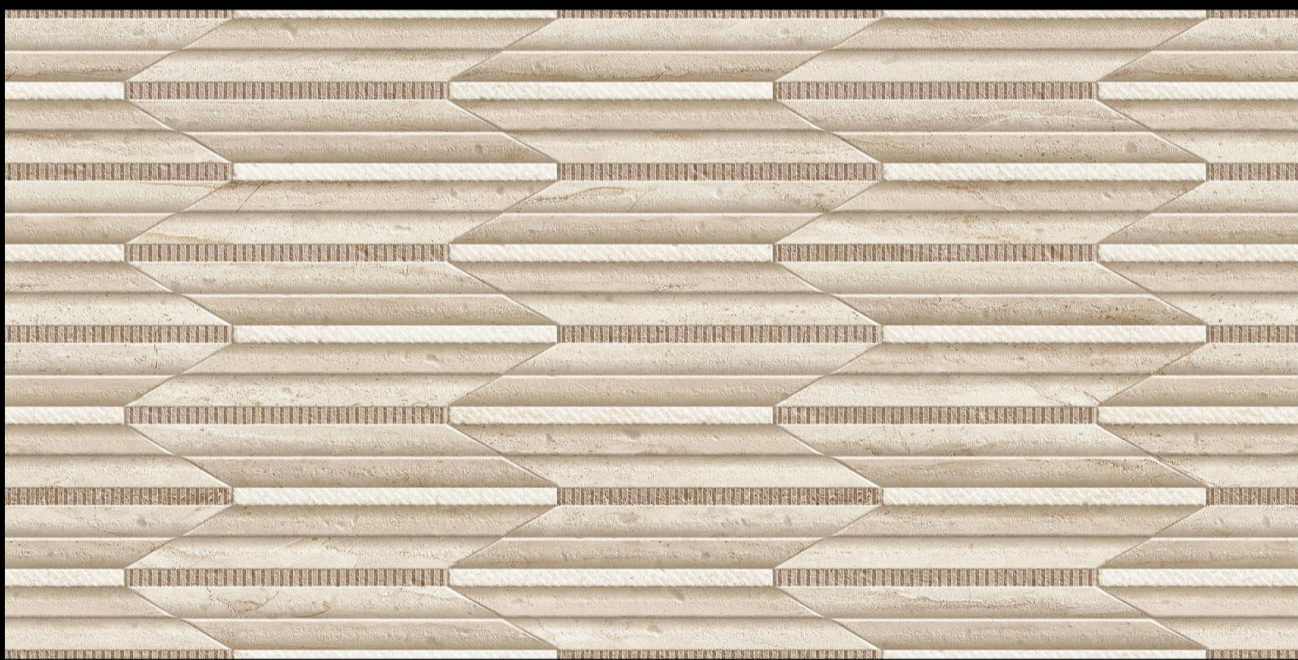


Matt Finish

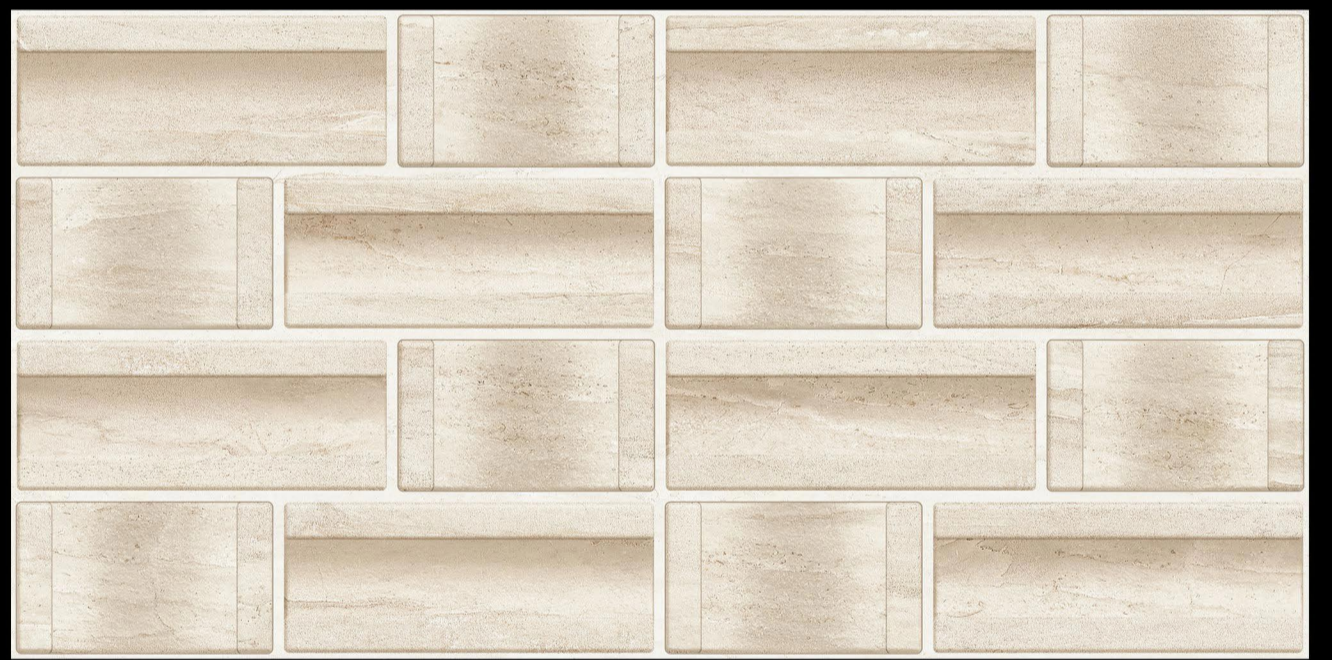
D.NO - SM-1554



L



HL-1



HL-2



L



Matt Finish

D.NO - SM-1556



L



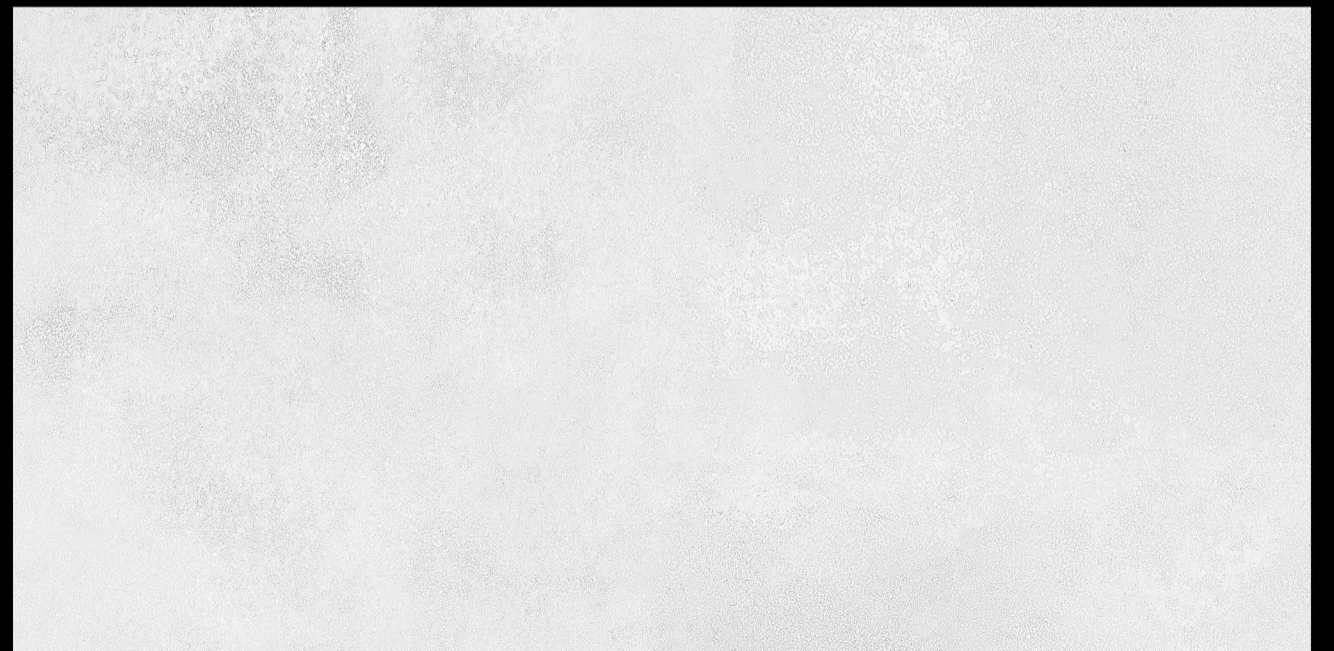
HL-1



L



HL-2



Matt Finish

D.NO - SM-1557



L



HL-1



HL-1



L



*digital wall tiles*

300 x 600 mm





## NEON TILE LLP

Corp. Office : G24, Siromany Business Center, B/h. Real Plaza,  
8-A National Highway, Morbi-363 641. (Guj.) INDIA.

Call : +91 82382 31831

E : [info@neontile.in](mailto:info@neontile.in)

W : [www.neontile.in](http://www.neontile.in)

Follow Us :

