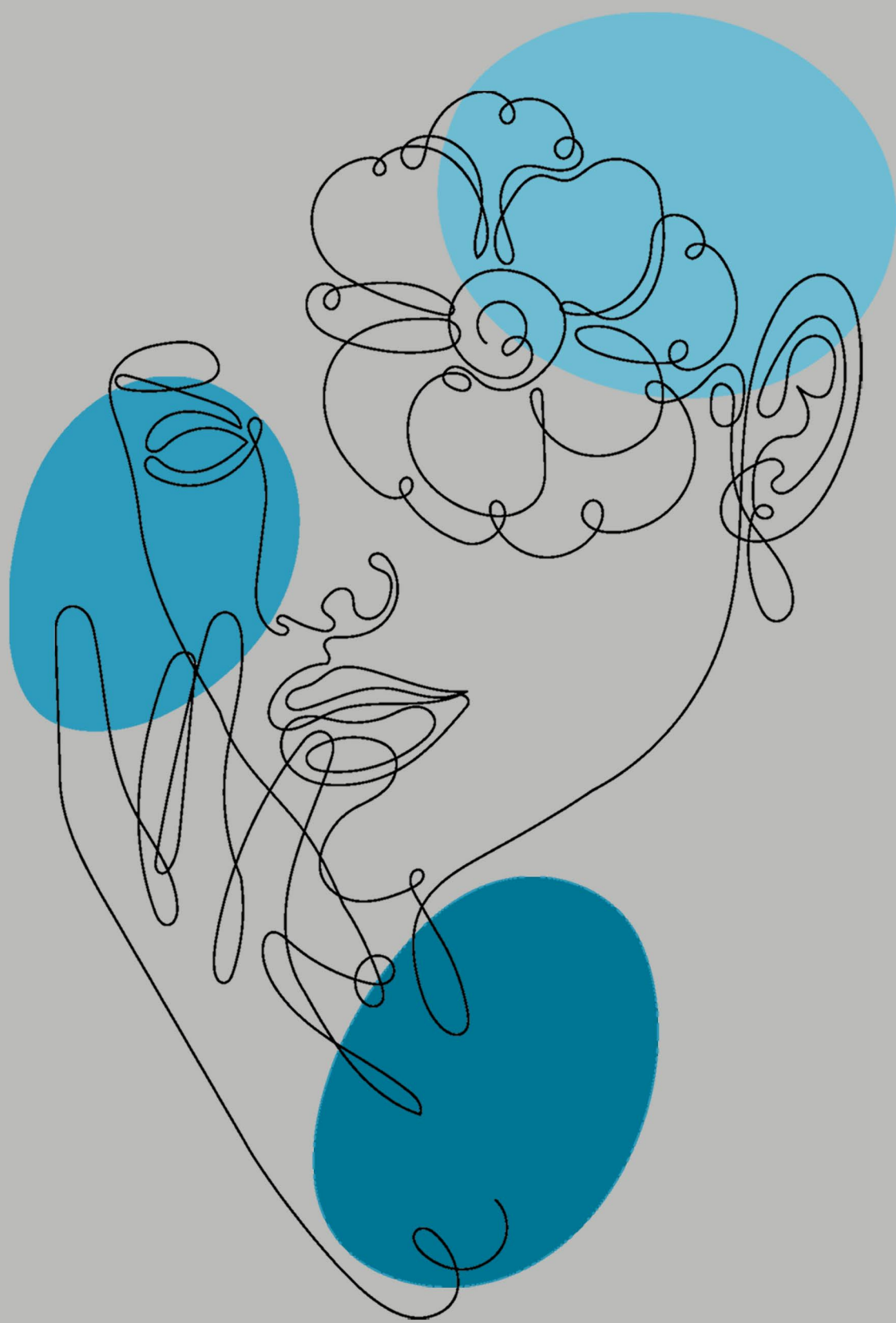


NEONTM

TILE



Experience
of natural surface...

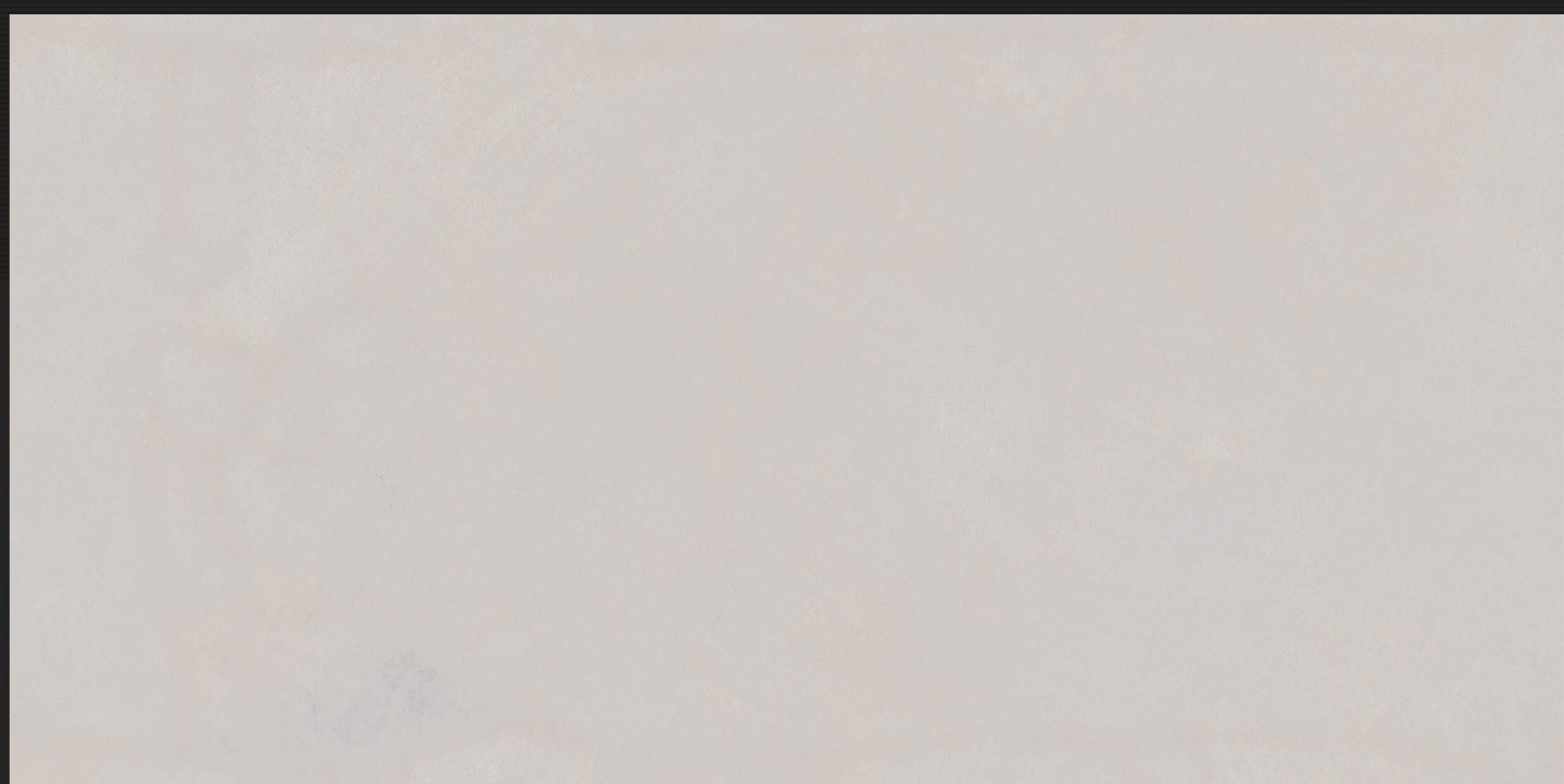
Mfg. & Exporter Of :

- ▶ Wall Tiles
- ▶ Floor Tiles
- ▶ Vitrified Tiles
- ▶ Sanitary Wares

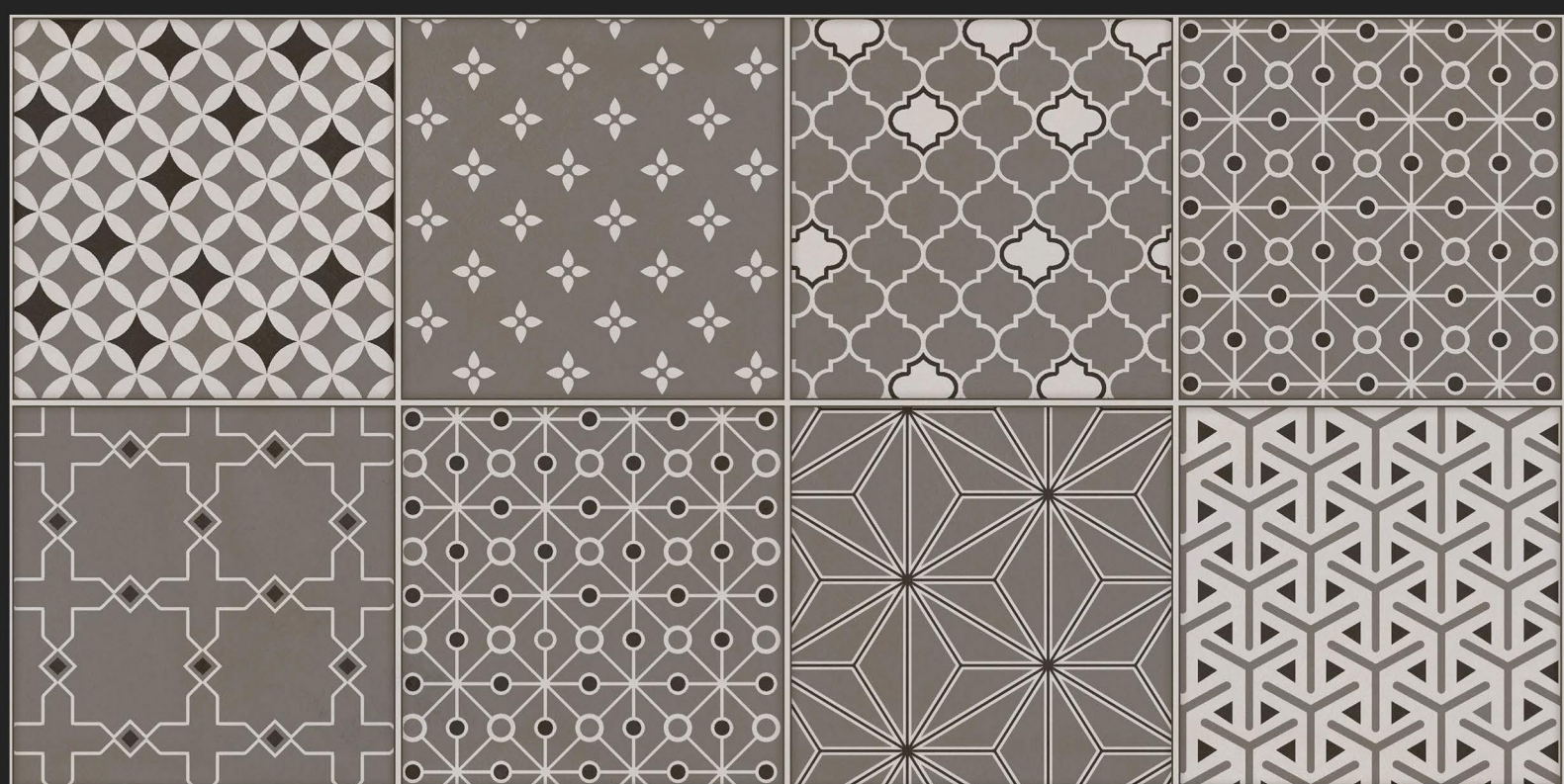
**DIGITAL
WALL TILES
300x600MM**

D.NO - SM-718

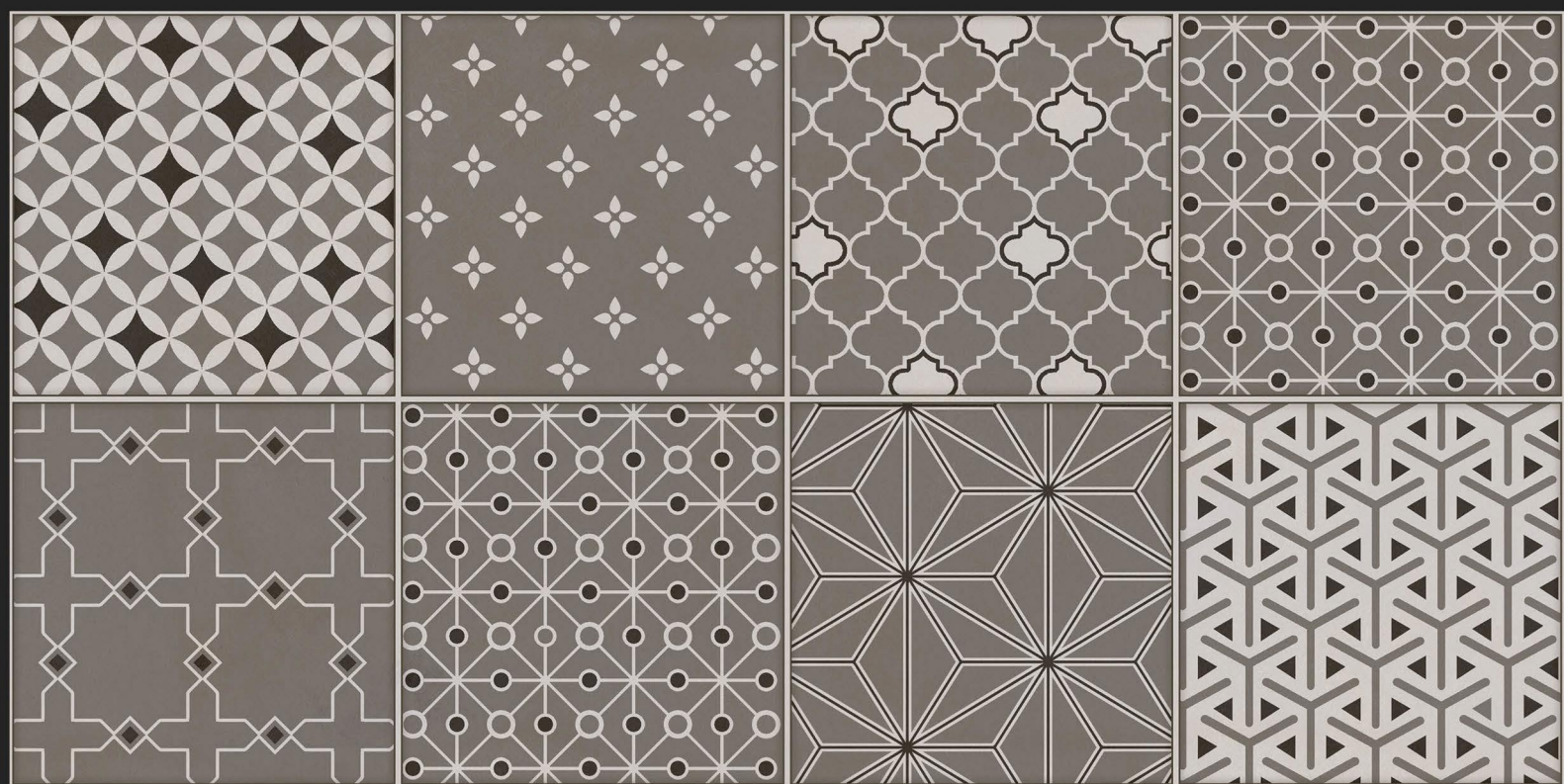
Glossy Finish



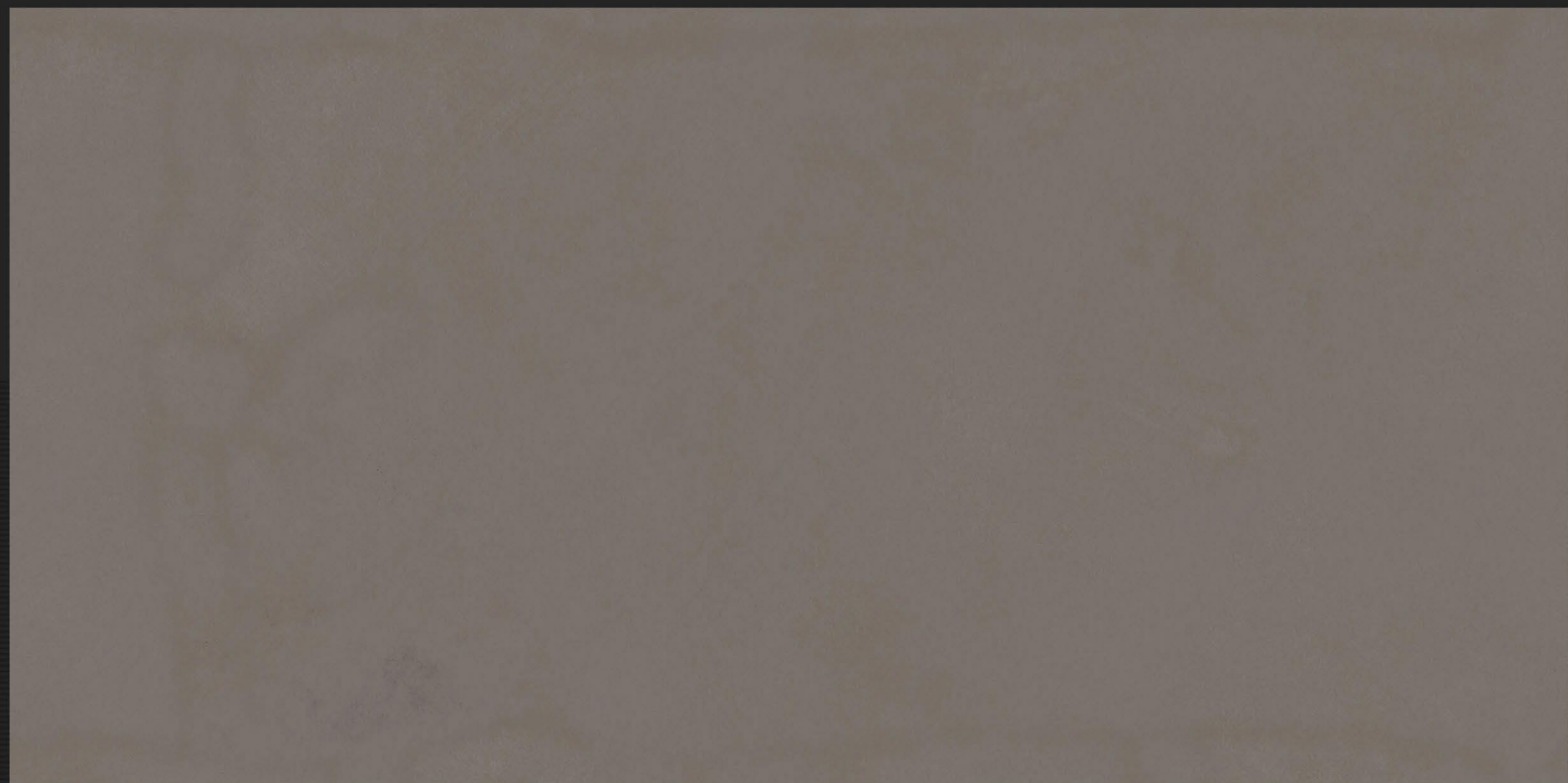
L



HL-1



HL-1

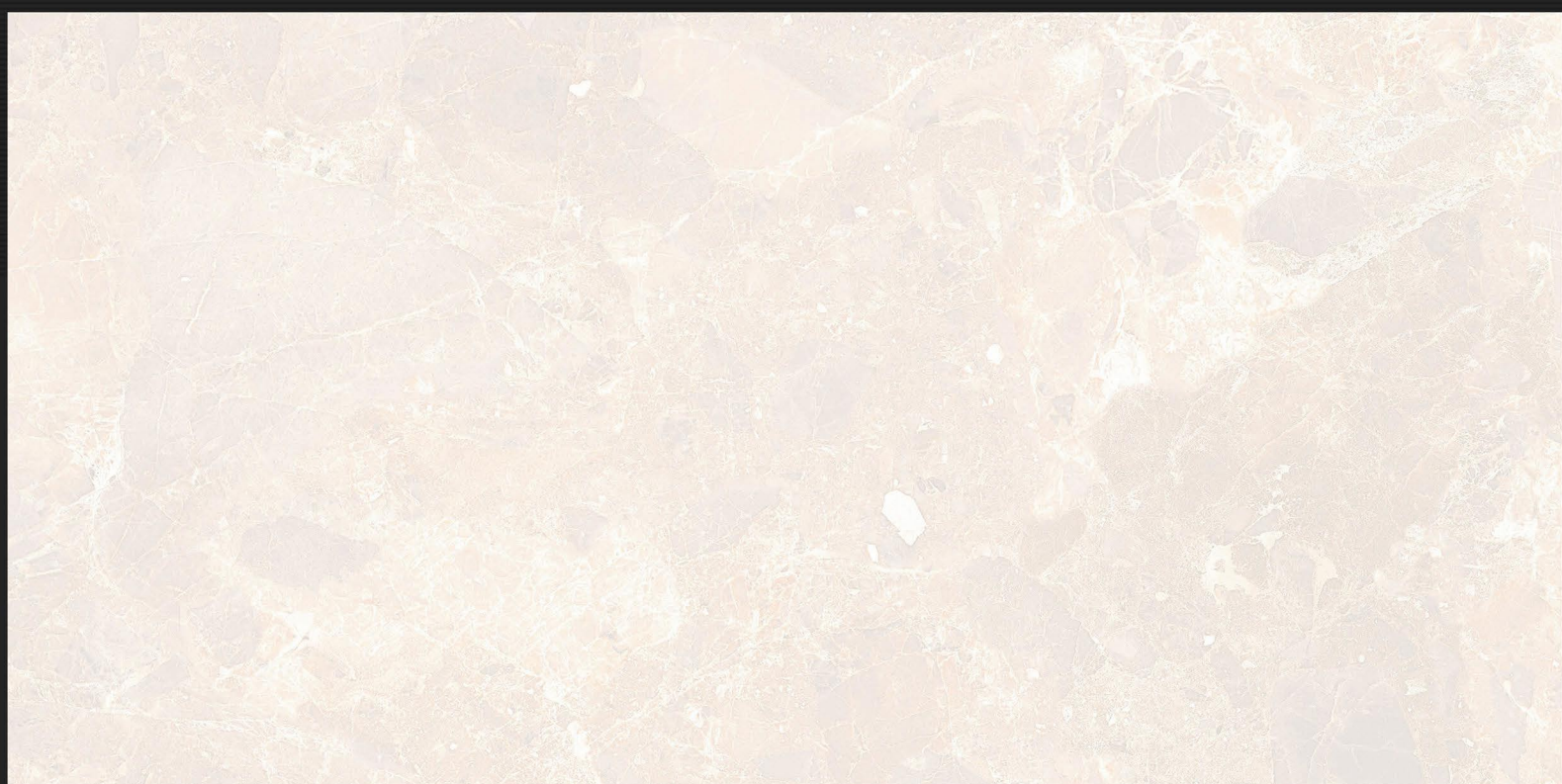


D

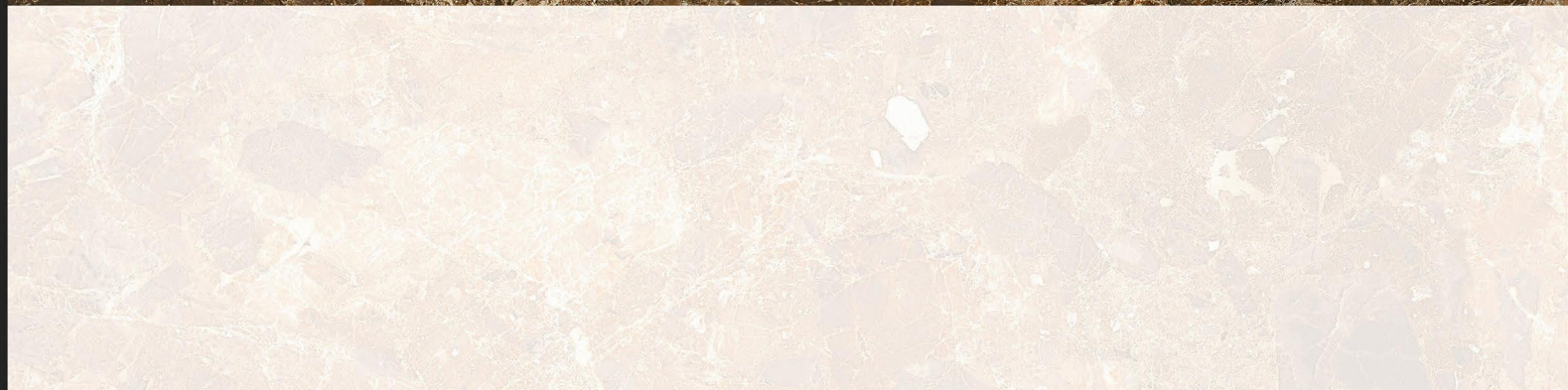
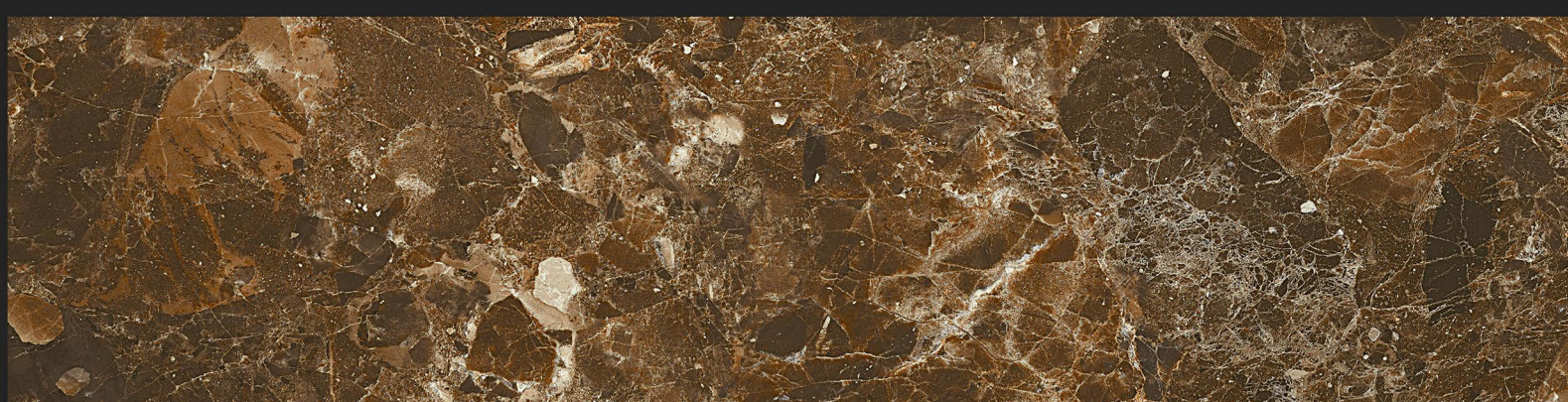


D.NO - SM-719

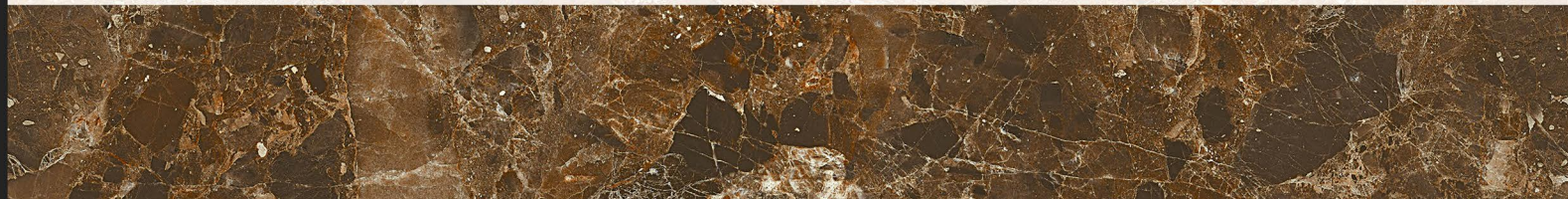
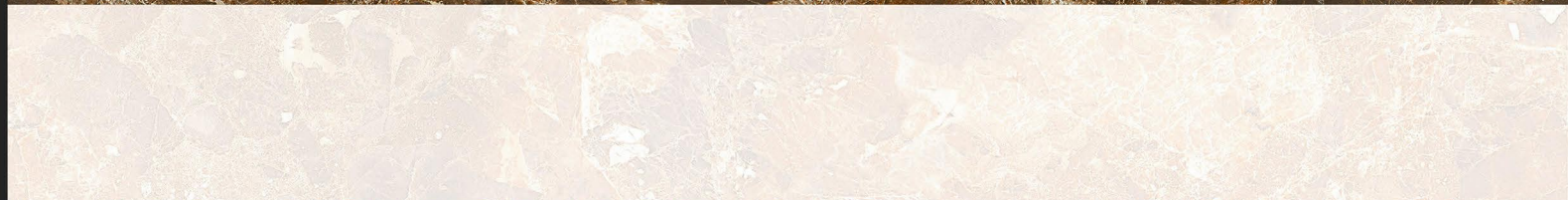
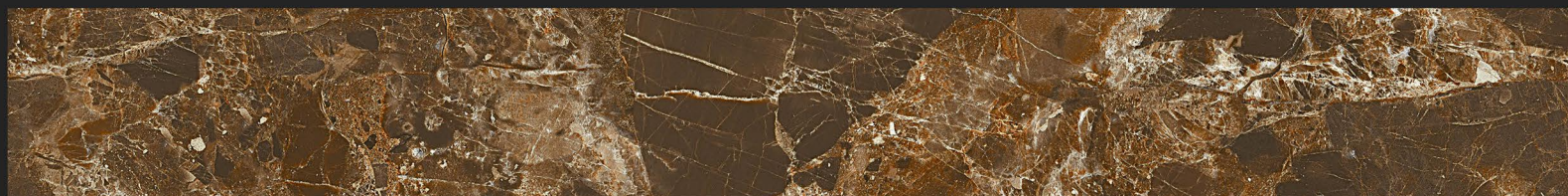
Glossy Finish



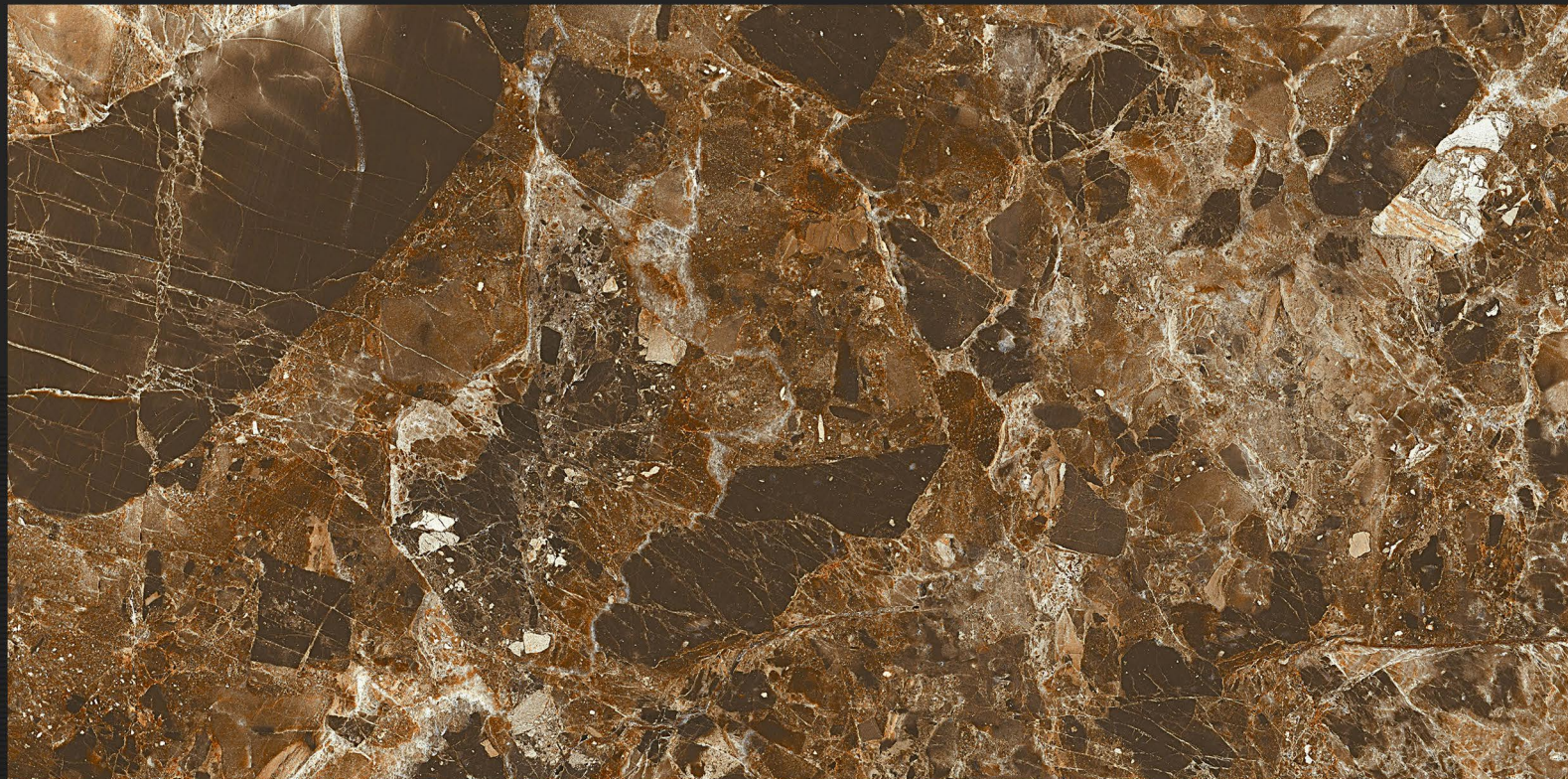
L



HL-1



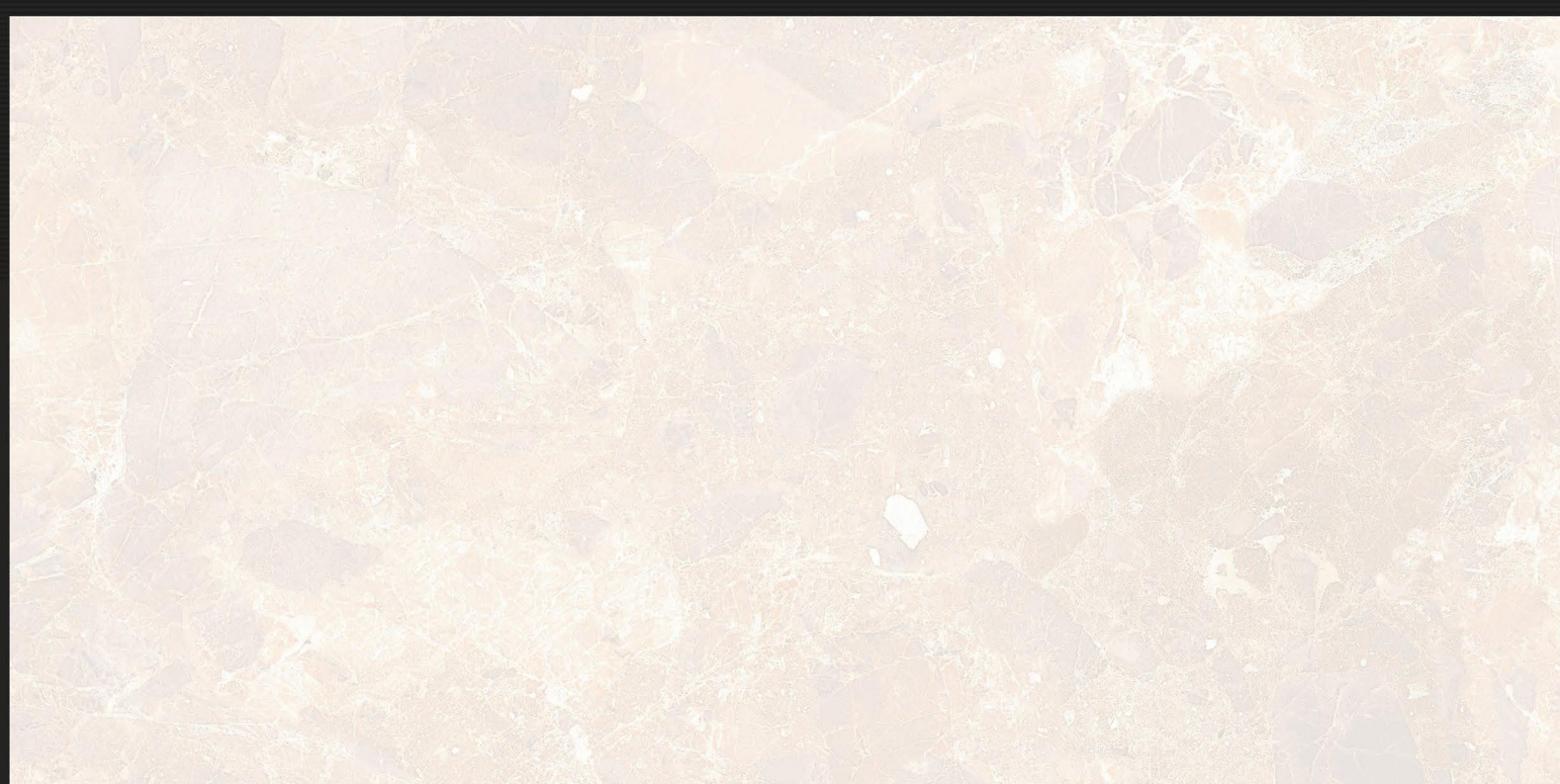
HL-2



D

D.NO - SM-719

Glossy Finish



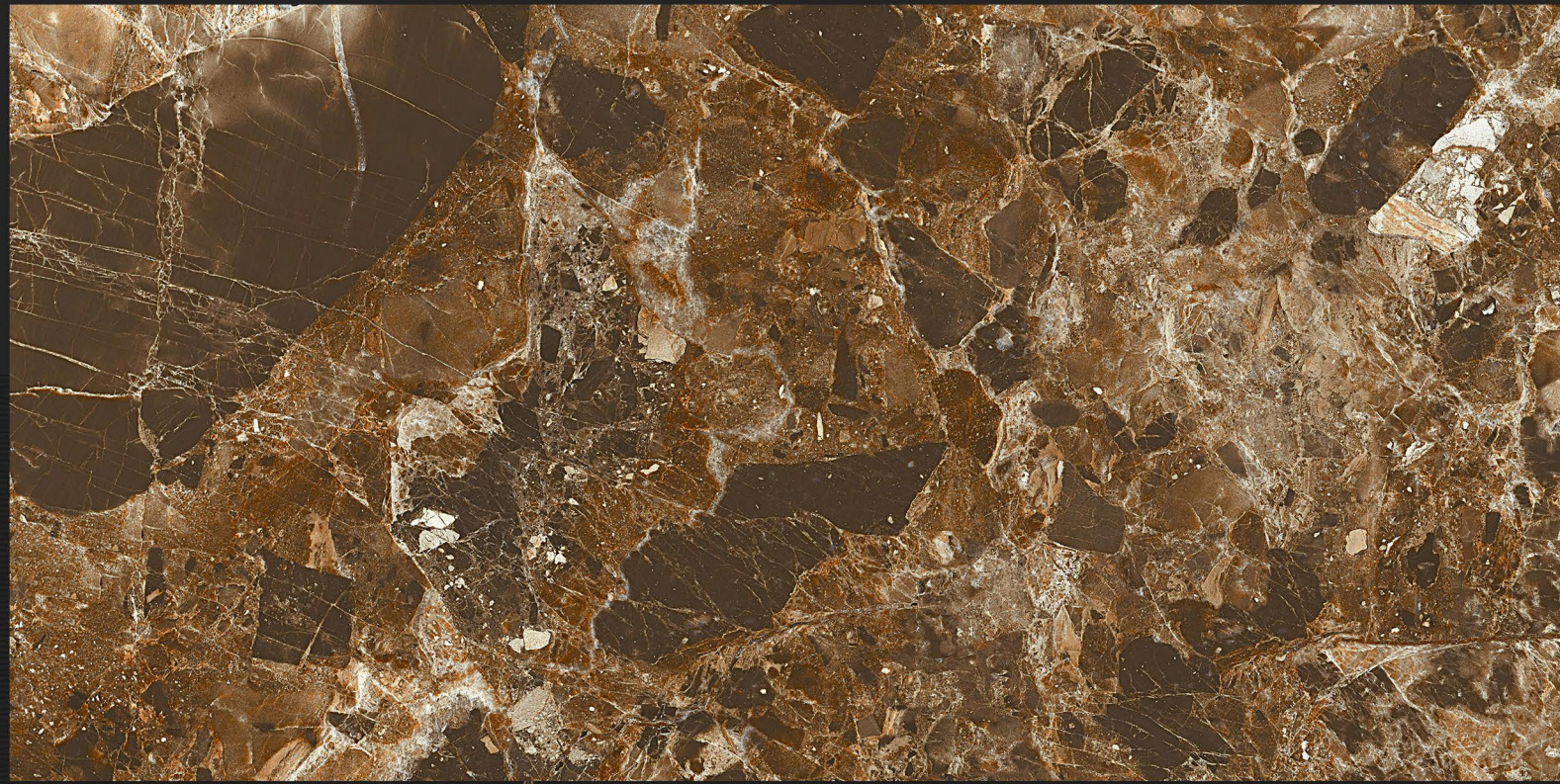
L



HL-3



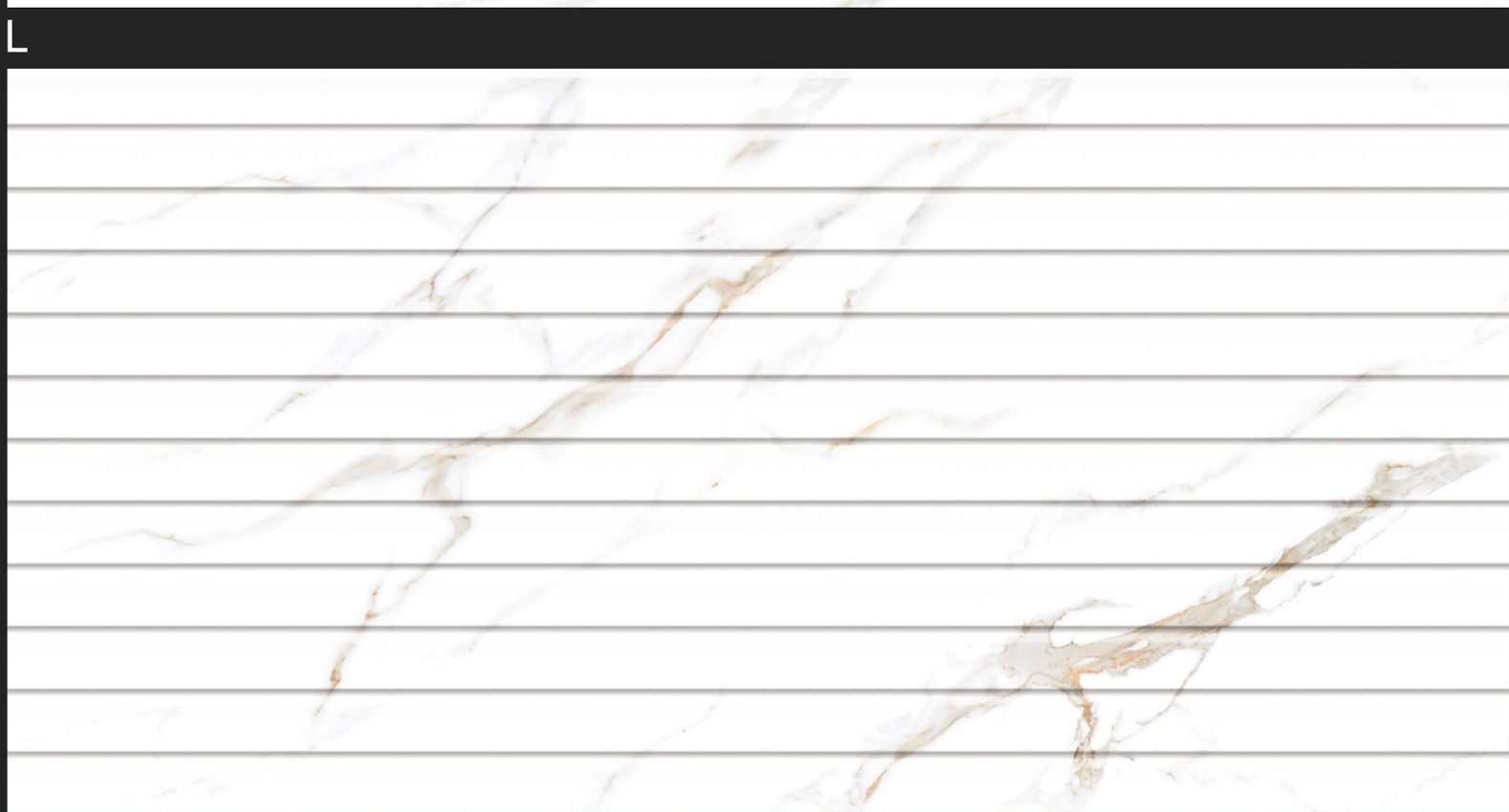
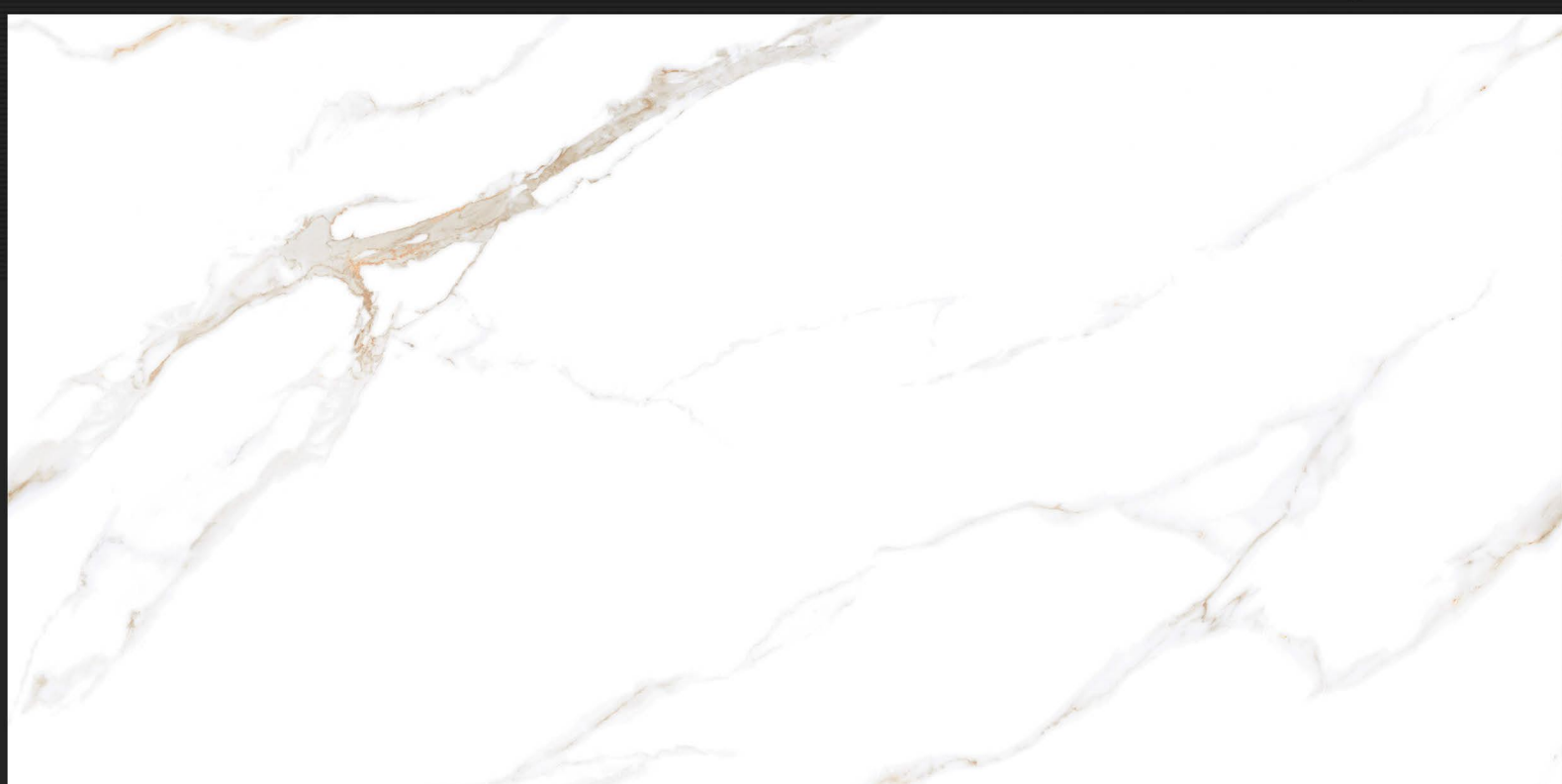
HL-3



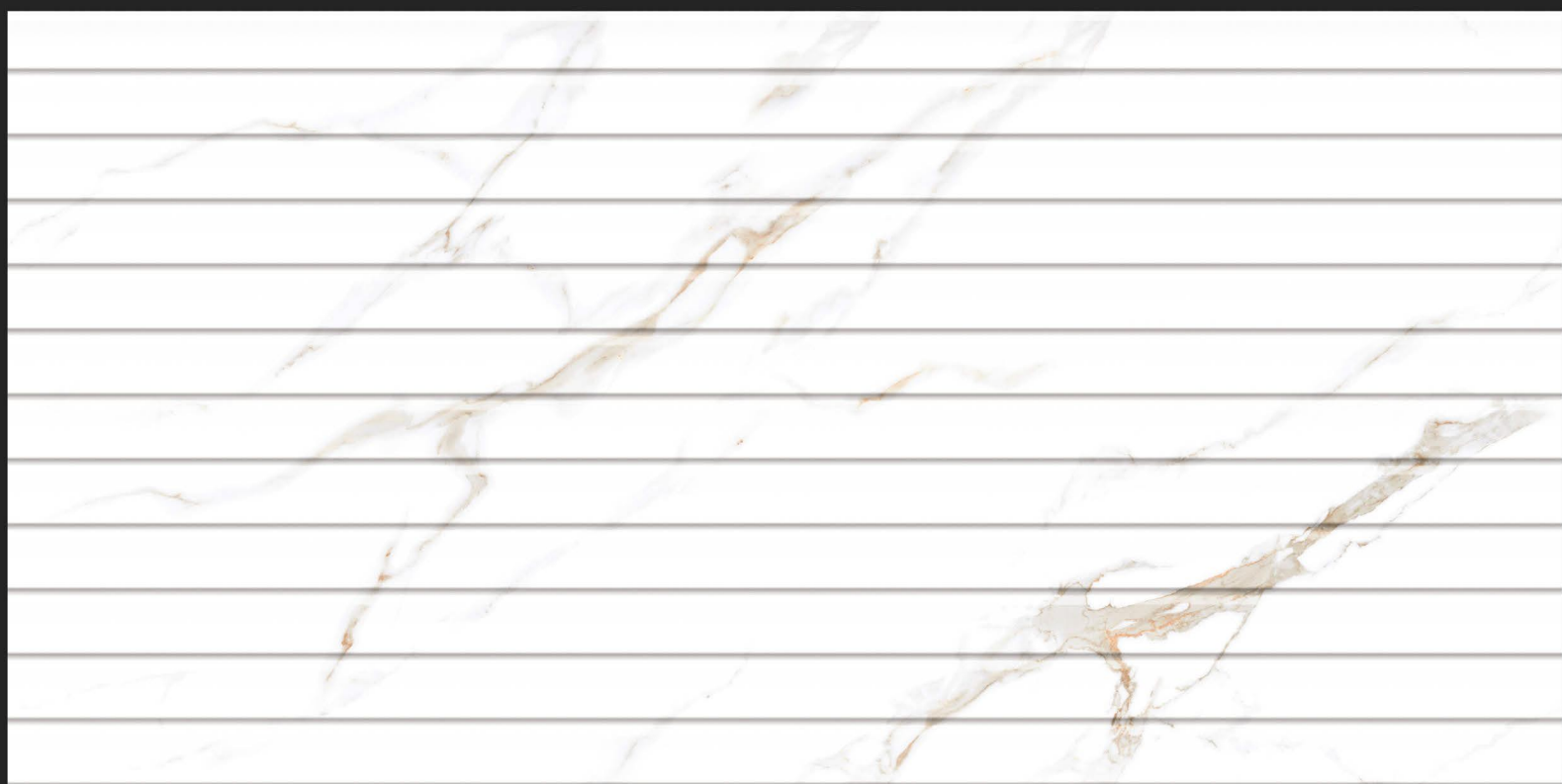
D

D.NO - SM-720

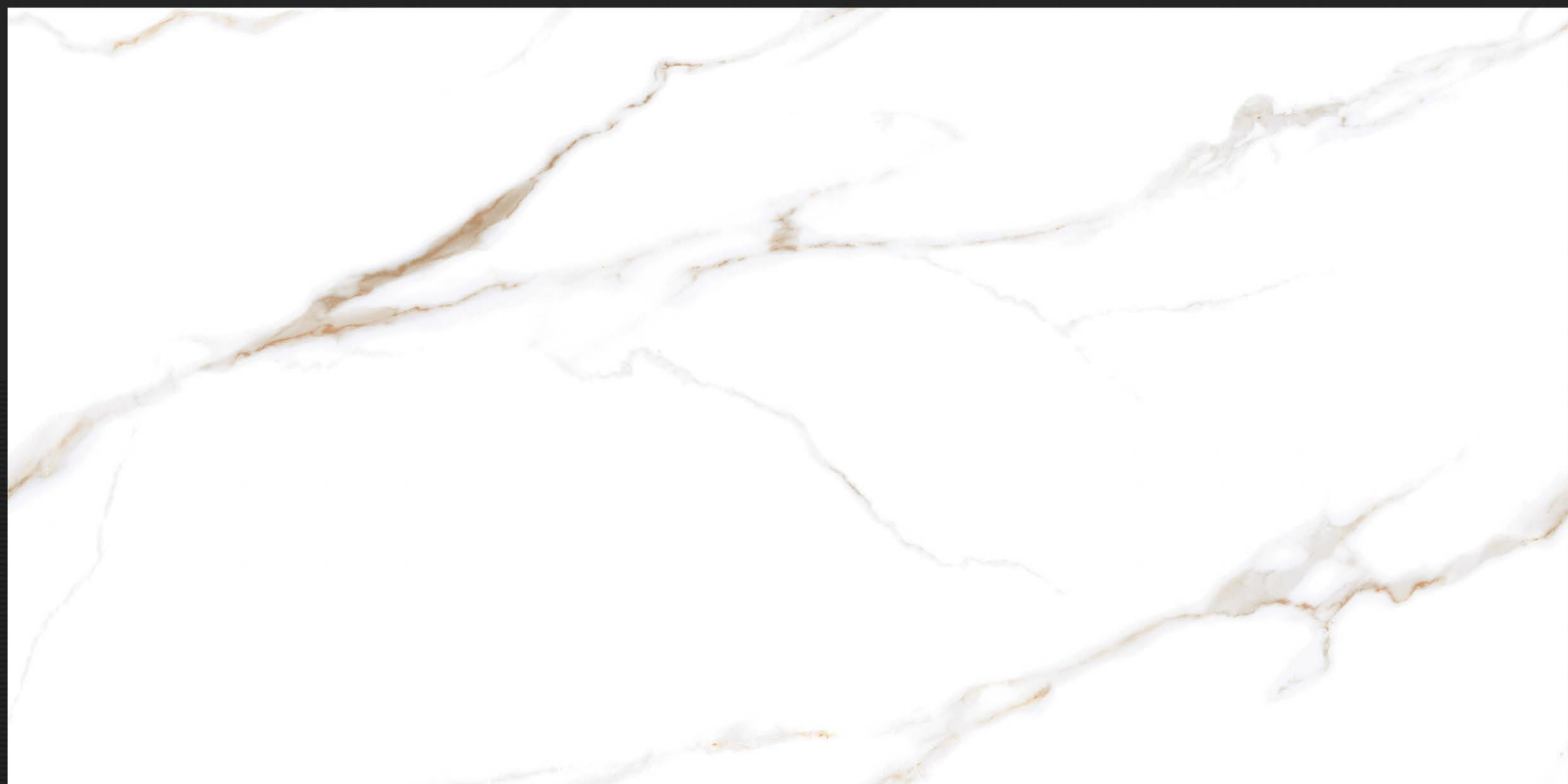
Glossy Finish



HL-1

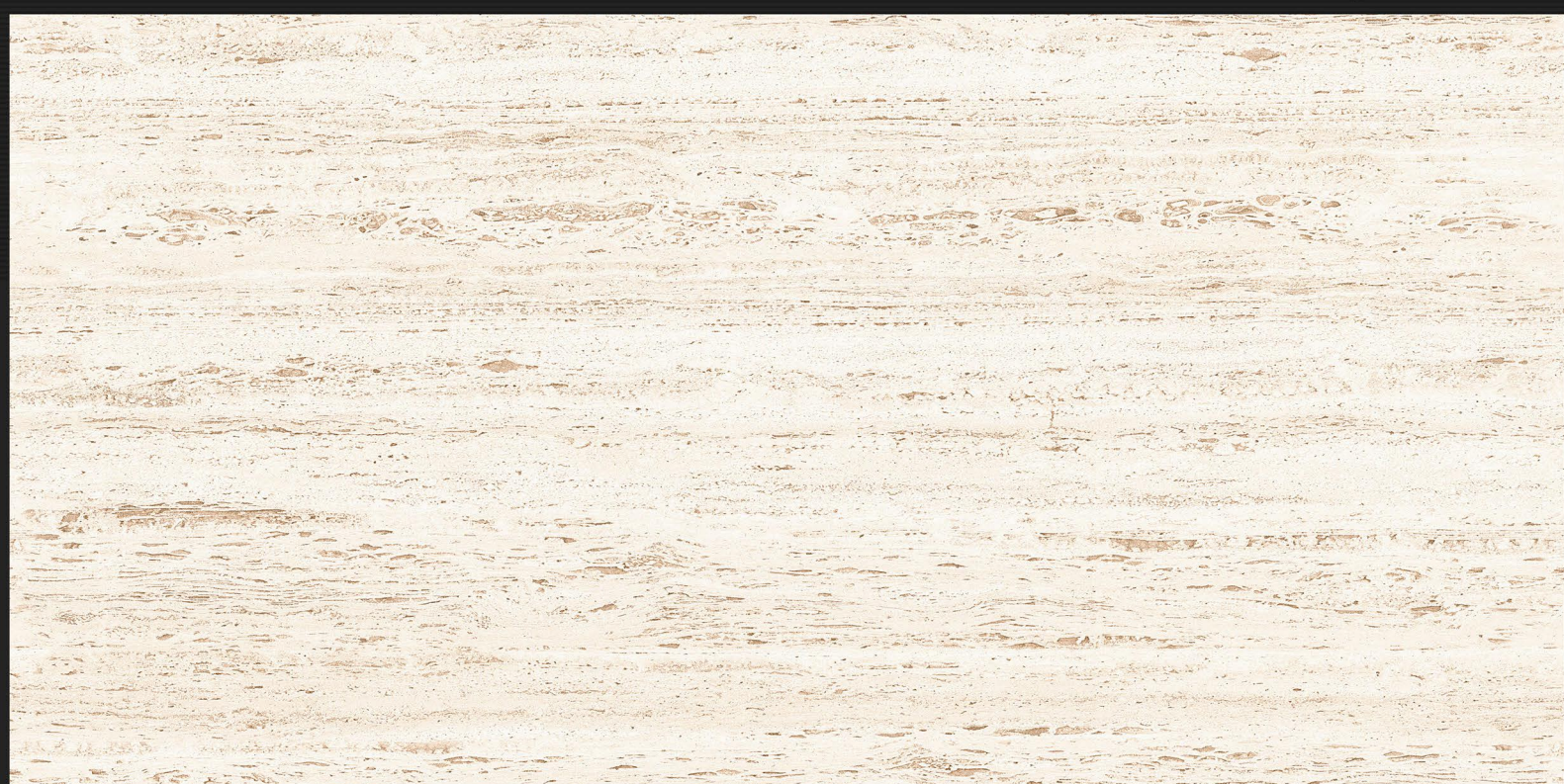


HL-1



D.NO - SM-721

Glossy Finish



L



HL-1



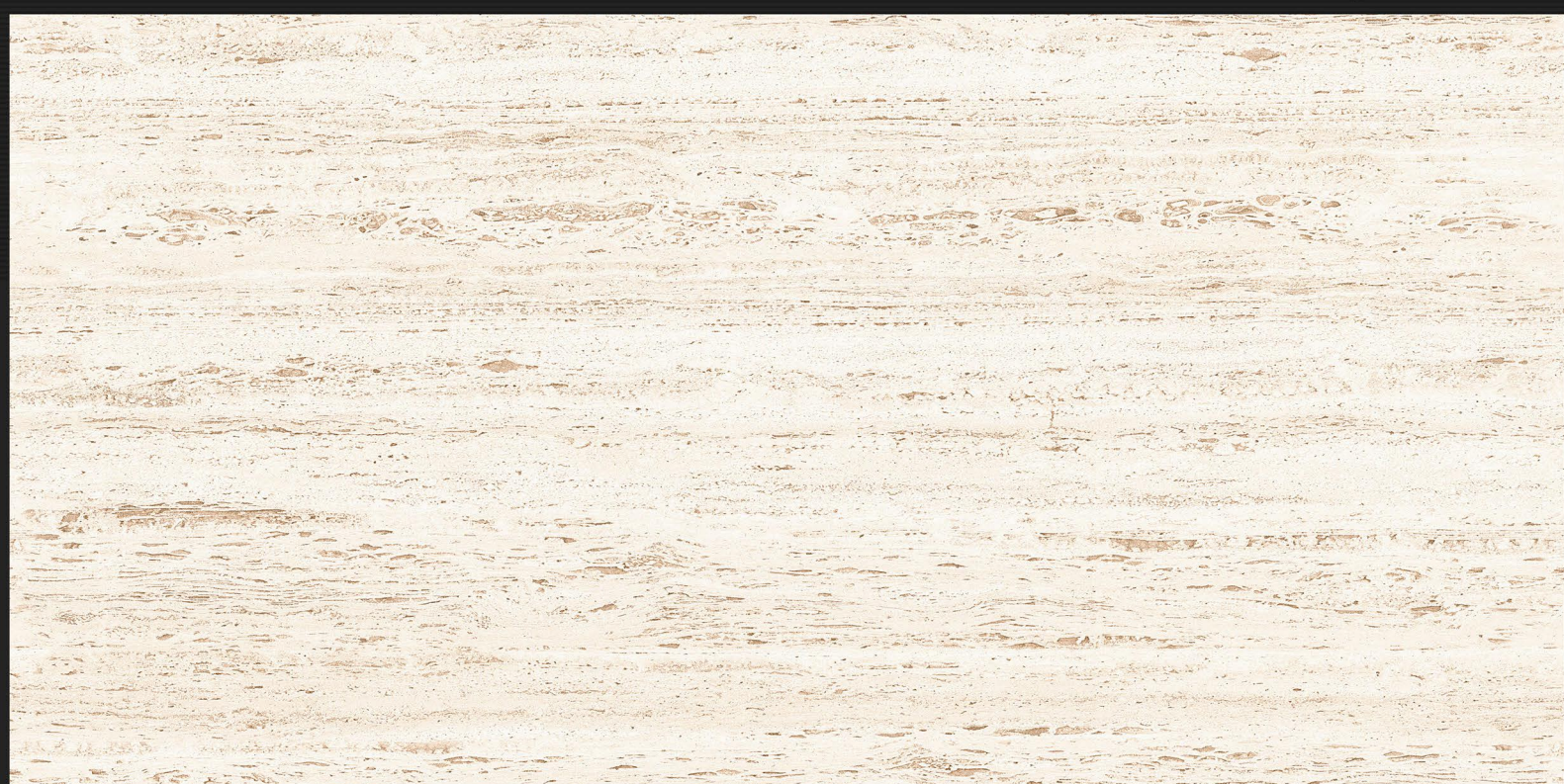
HL-2



D

D.NO - SM-721

Glossy Finish



L



HL-3



HL-3

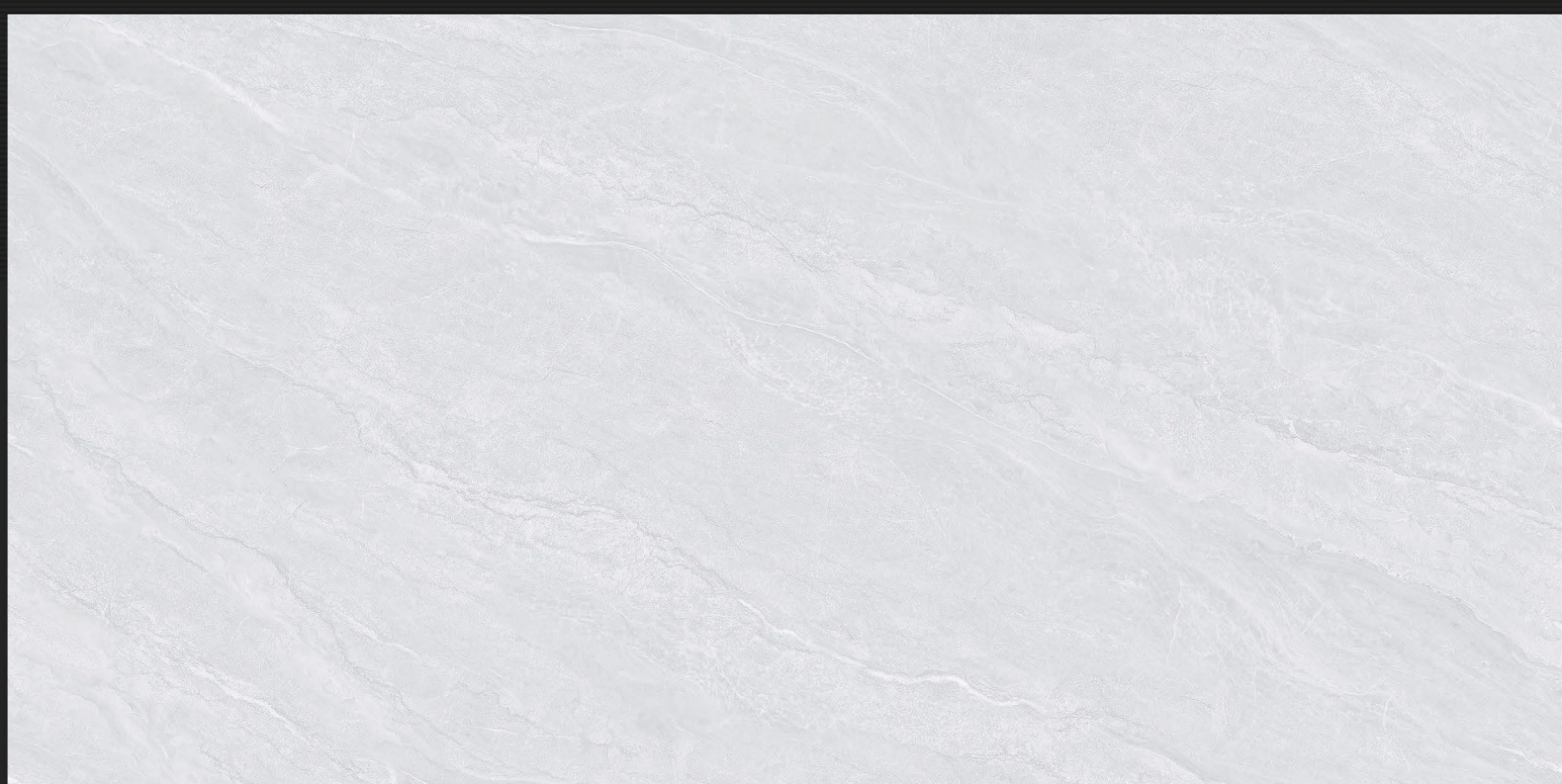


D



D.NO - SM-722

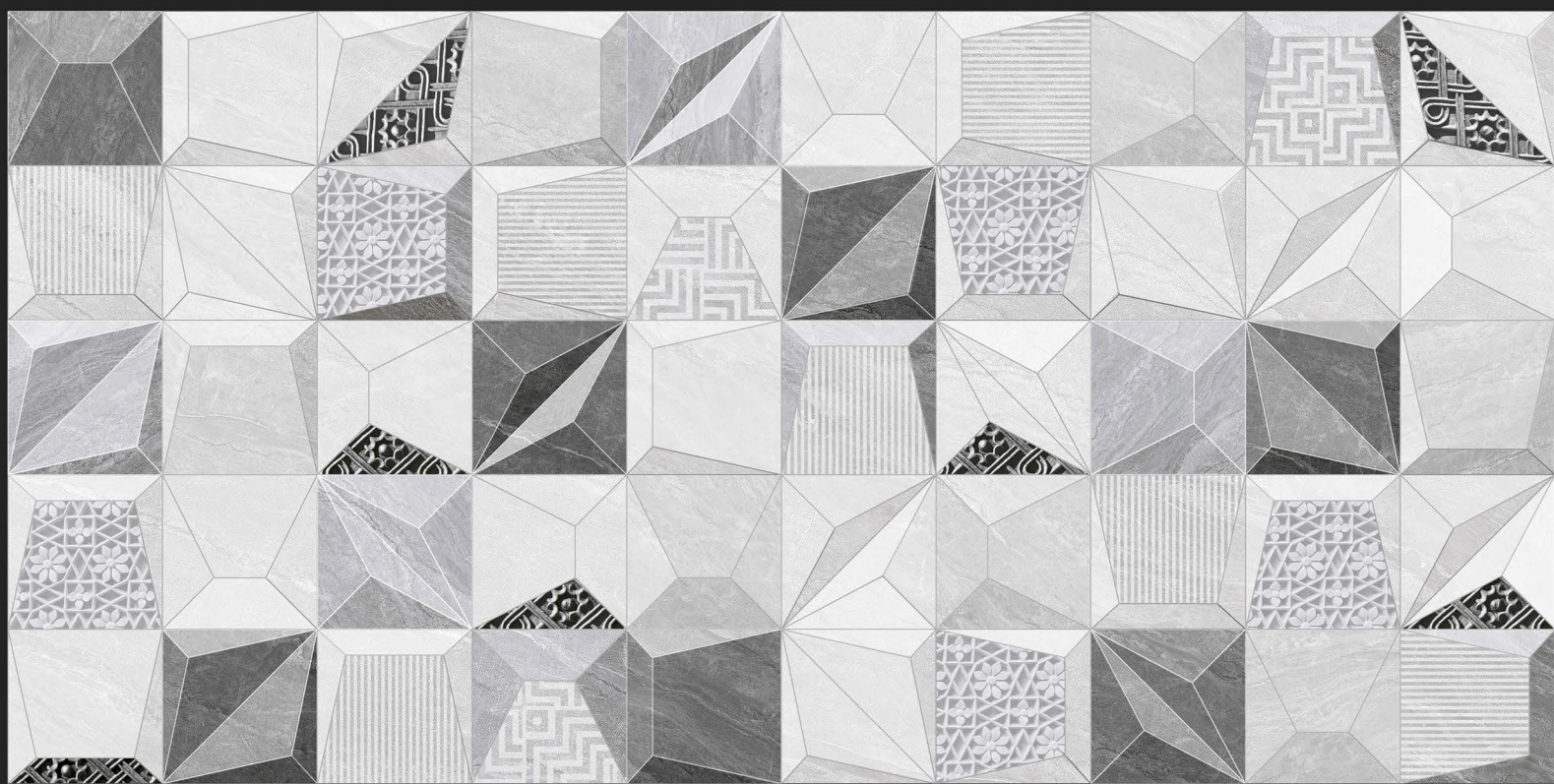
Glossy Finish



L



HL-1



HL-2

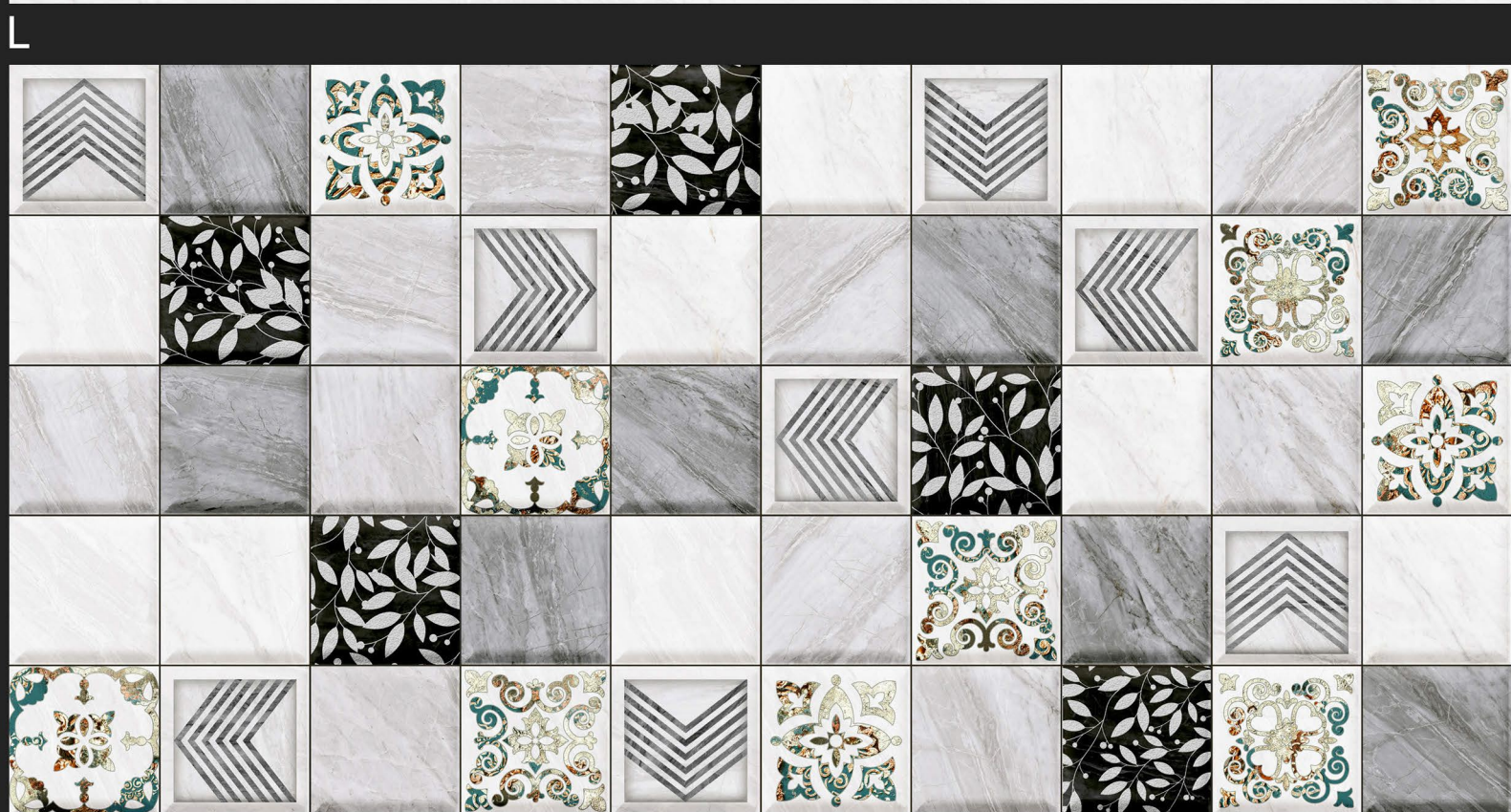
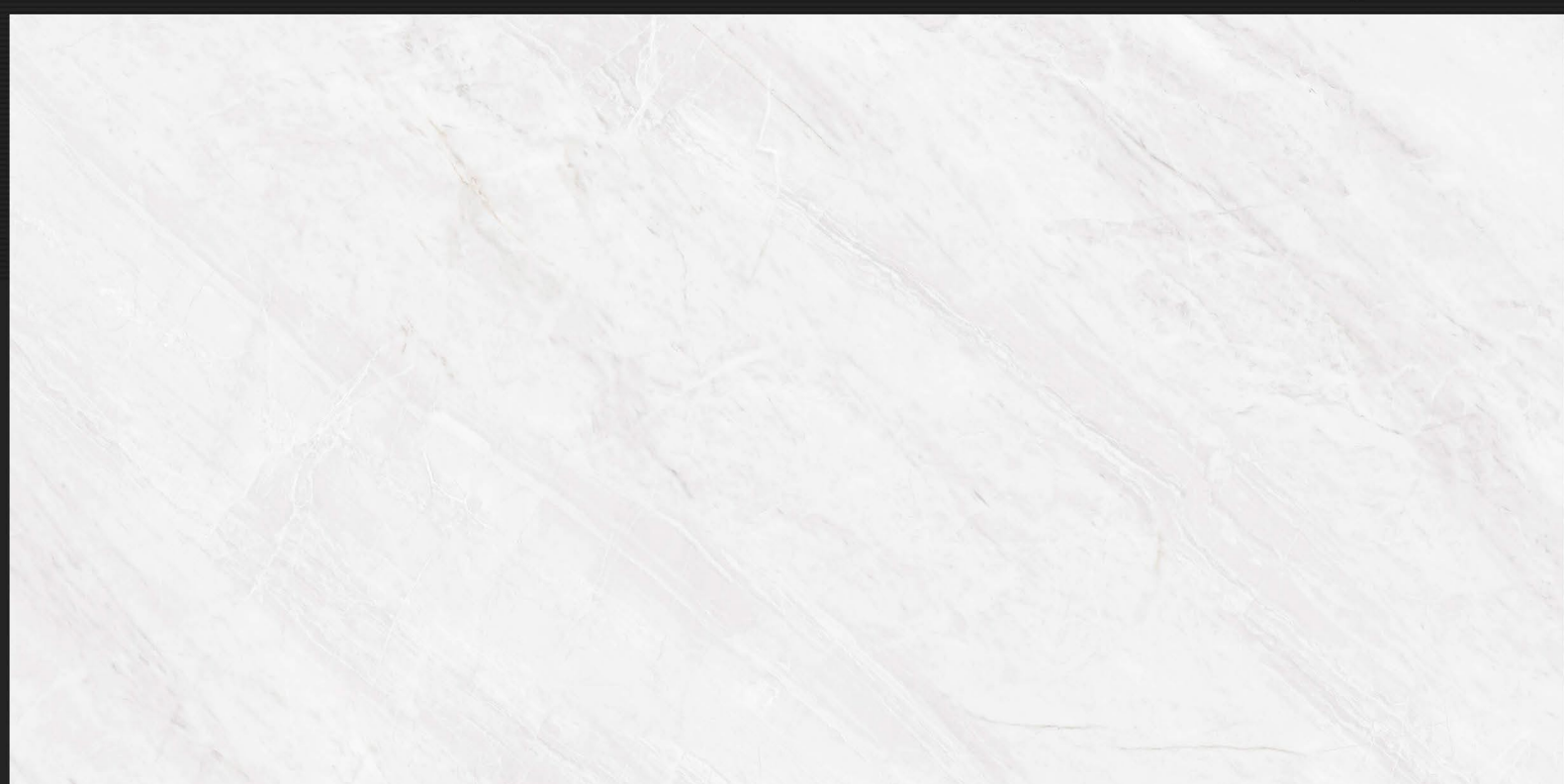


D



D.NO - SM-723

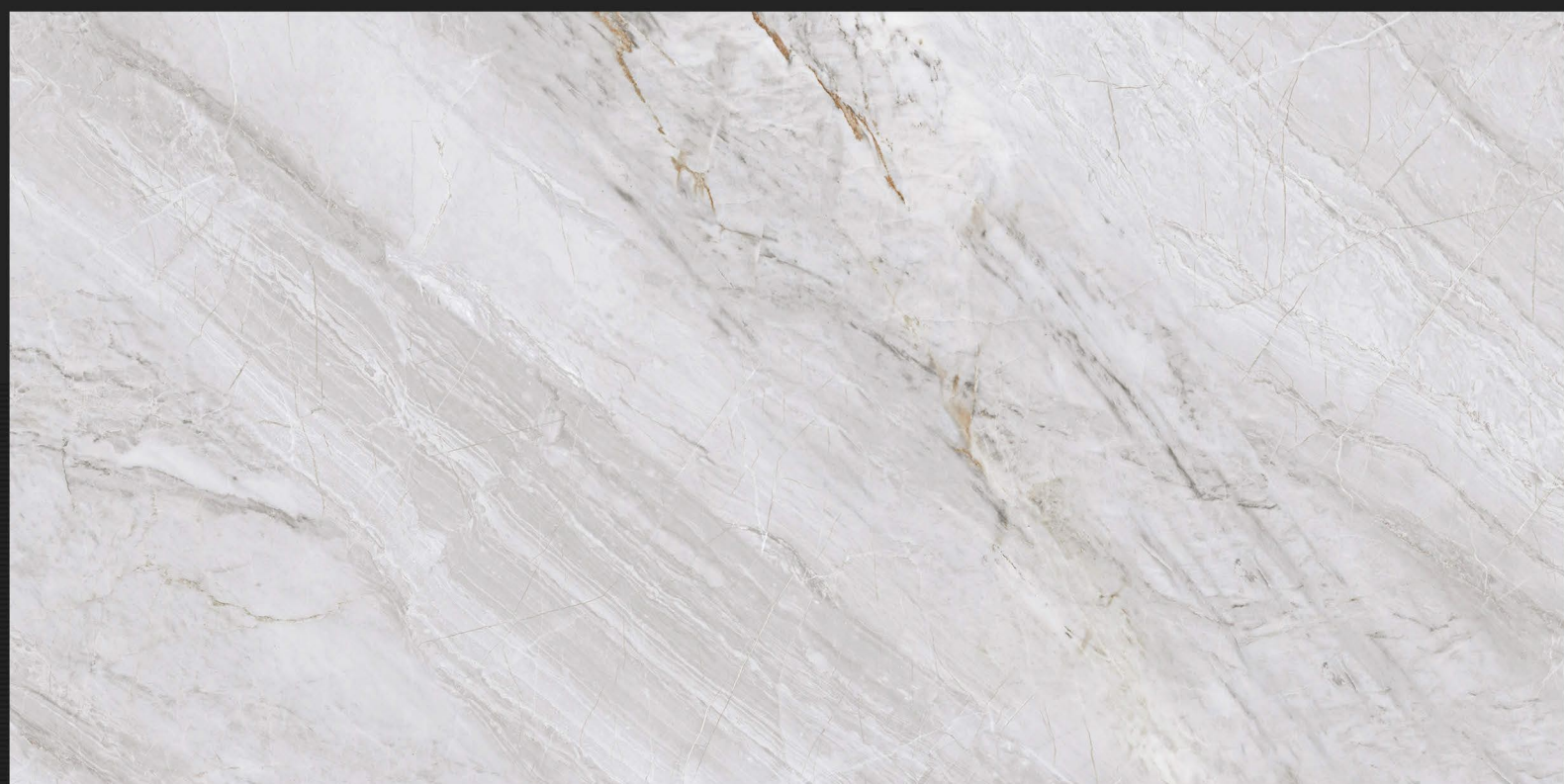
Glossy Finish



HL-1



HL-1

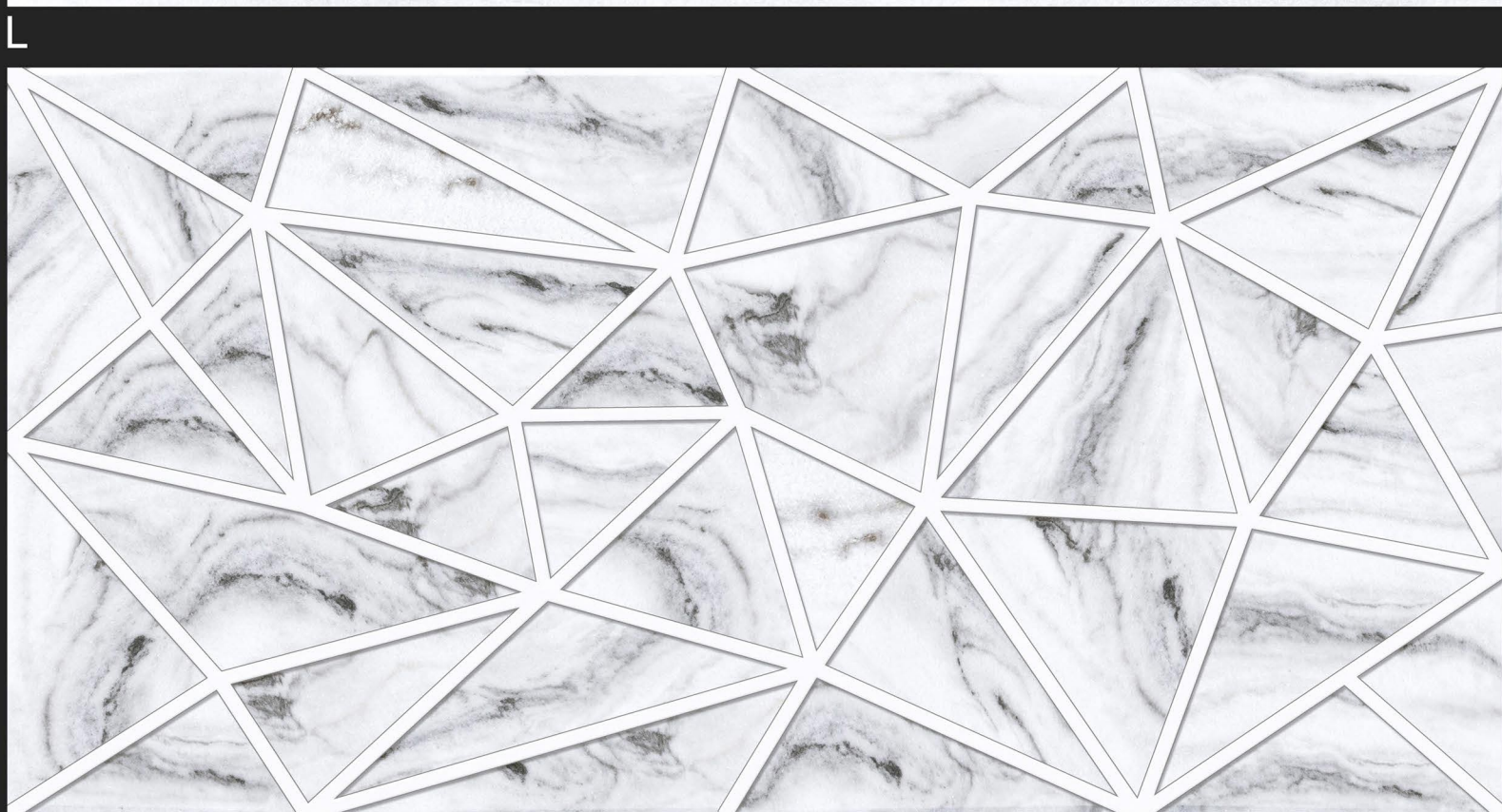


D



D.NO - SM-724

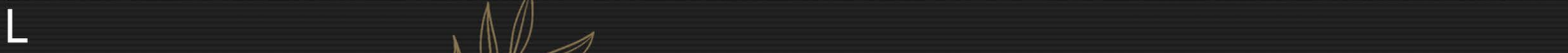
Glossy Finish



HL-1

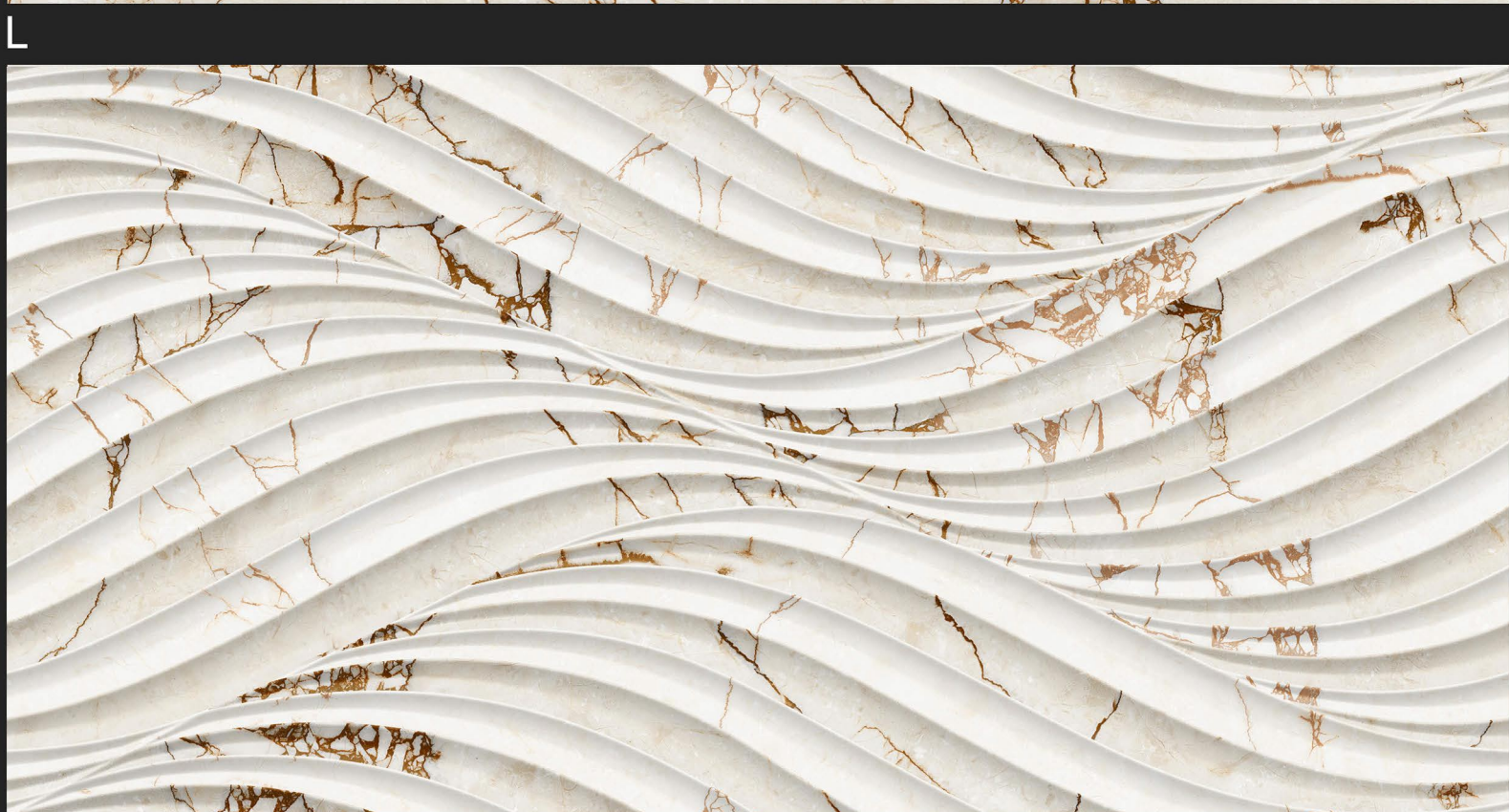
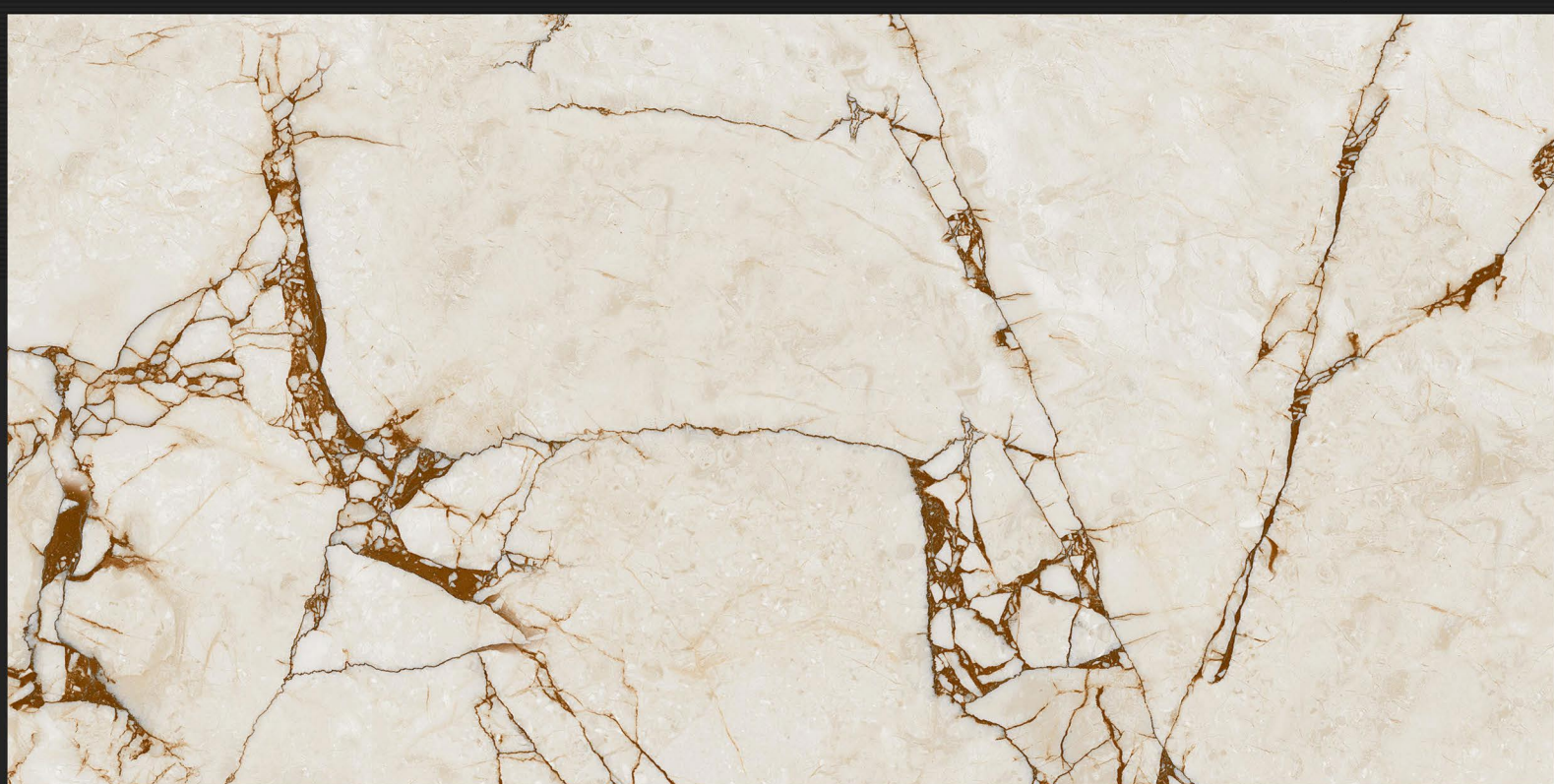


HL-1



D.NO - SM-725

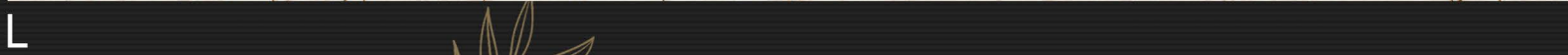
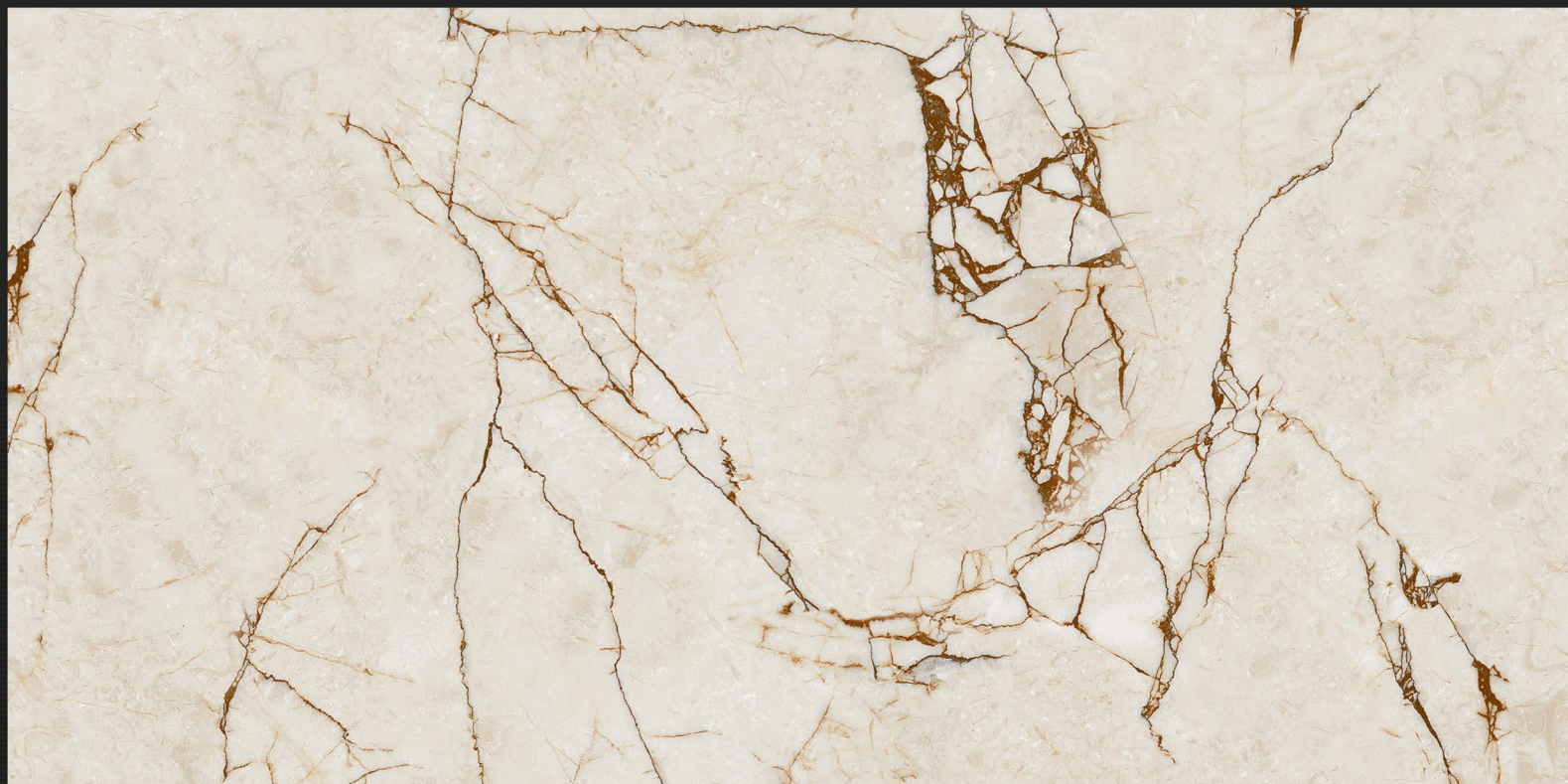
Glossy Finish



HL-1

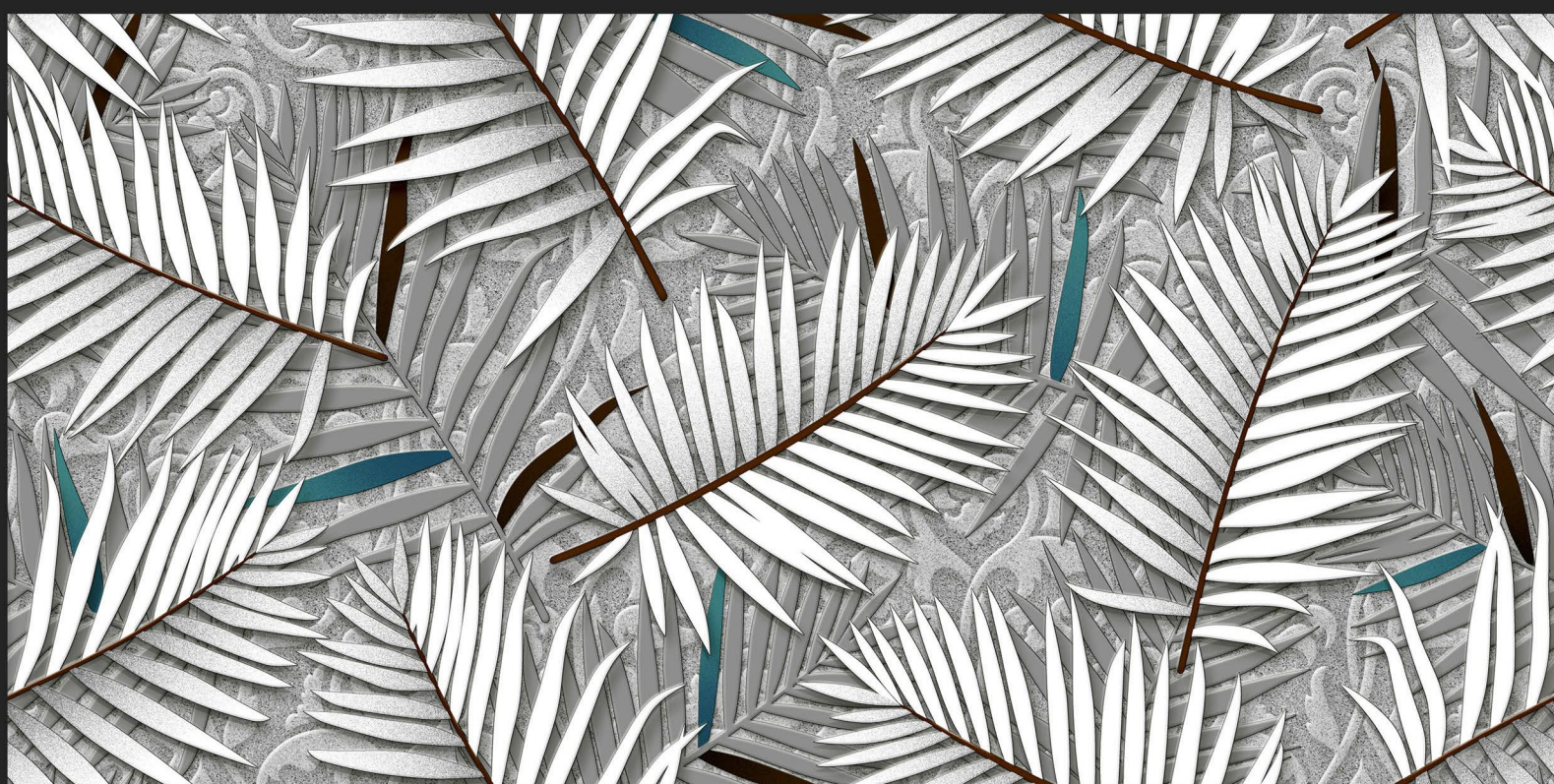


HL-1

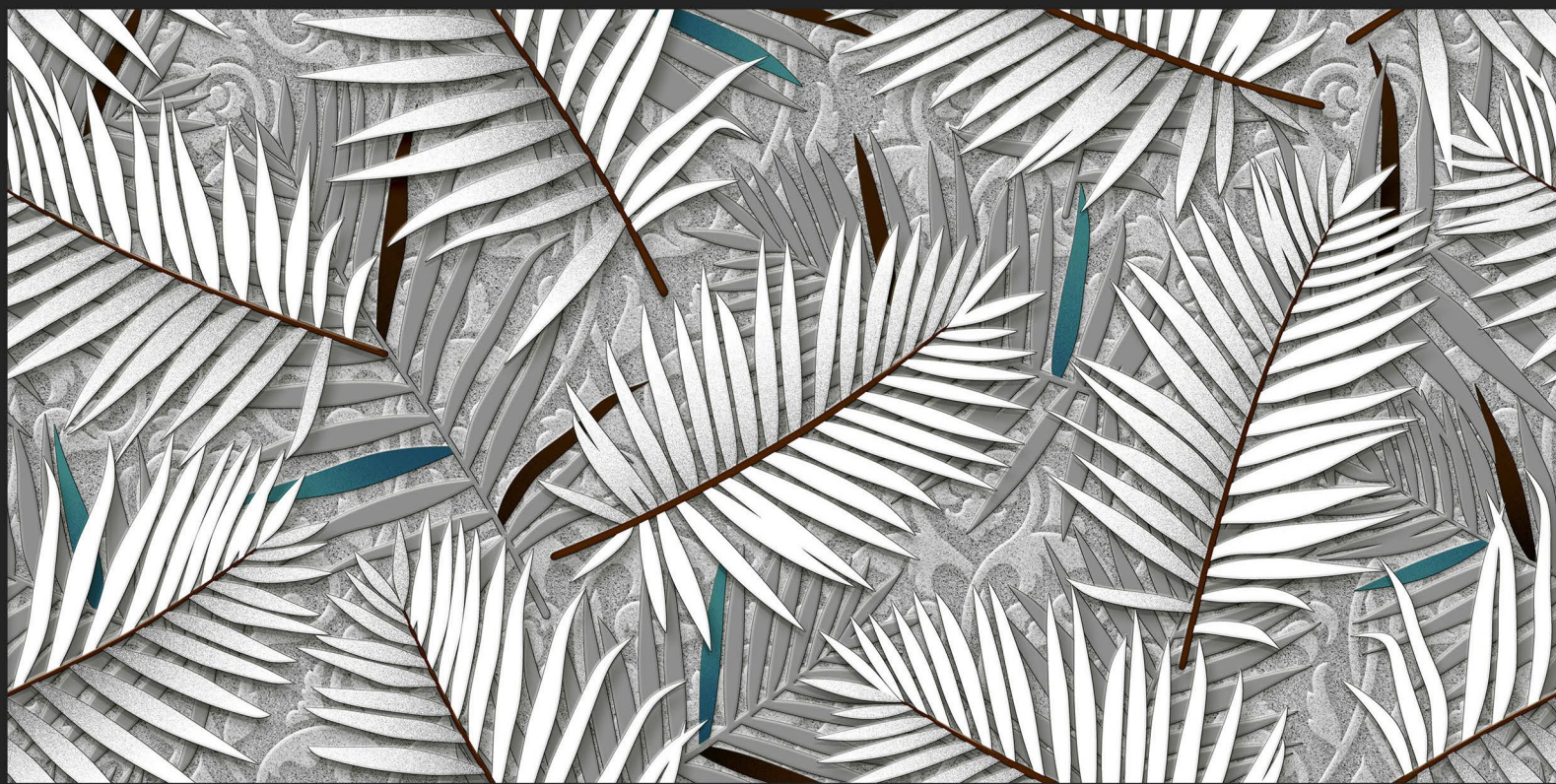


D.NO - SM-726

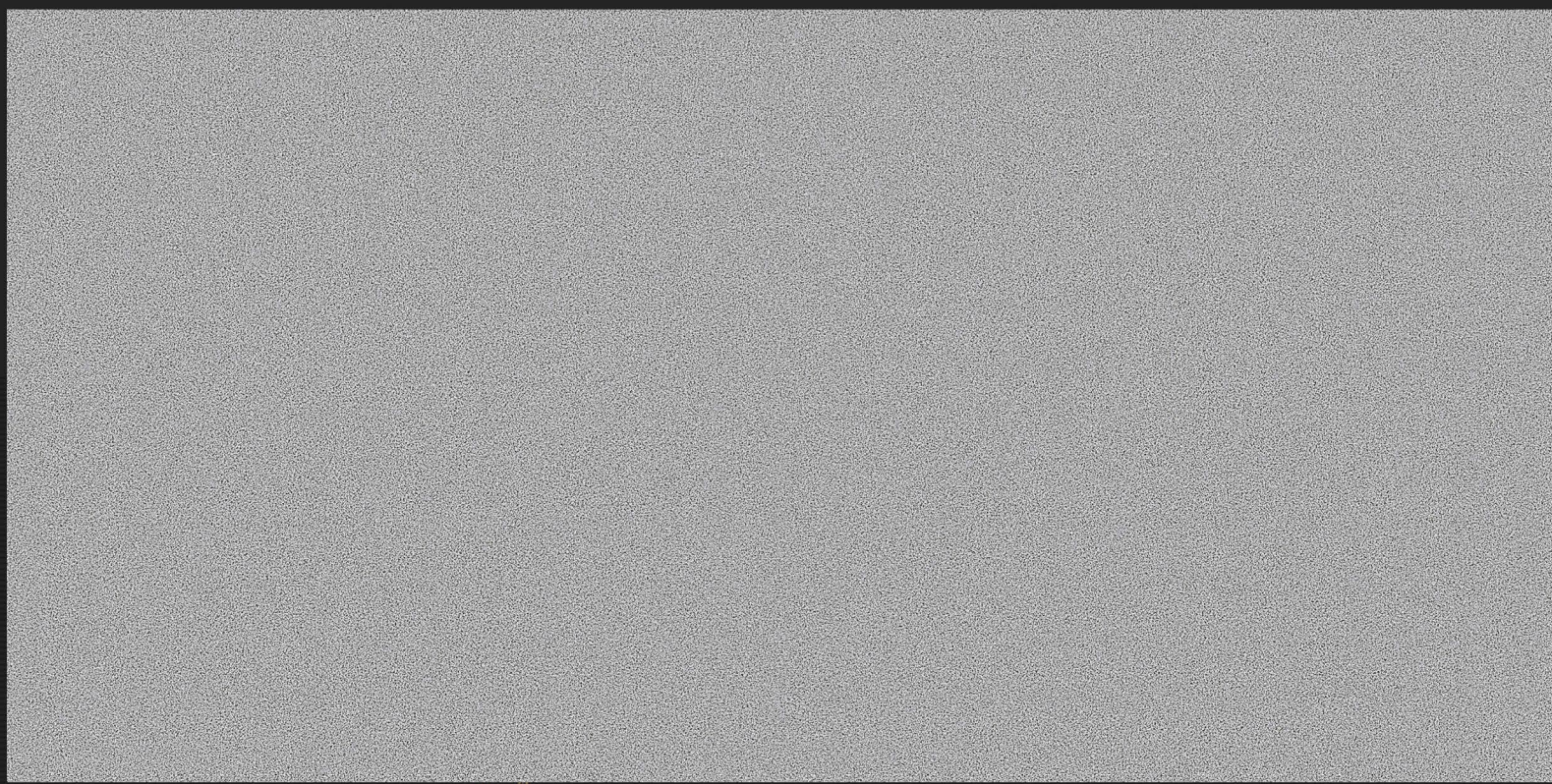
Glossy Finish



HL-1



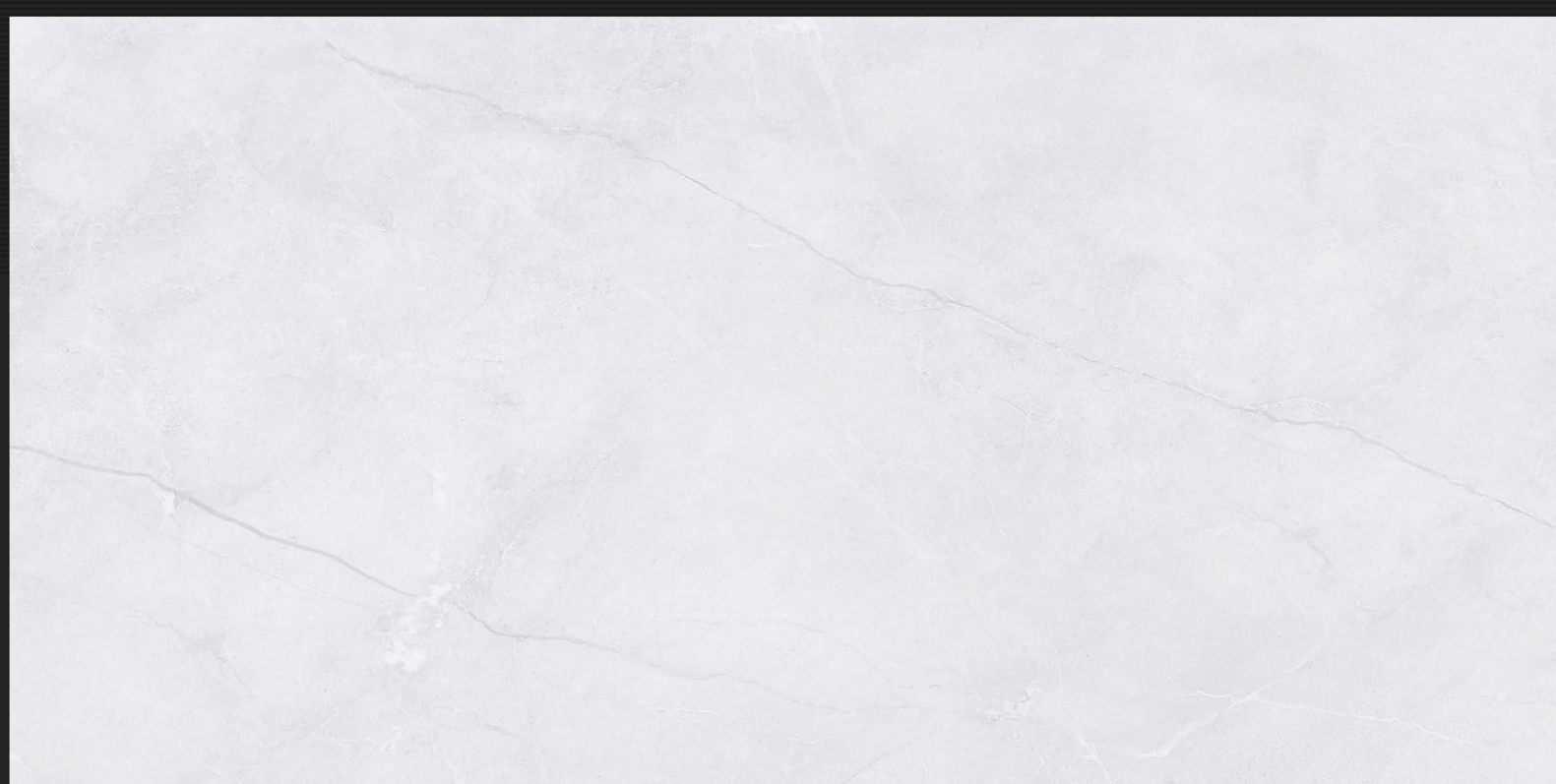
HL-1



D

D.NO - SM-727

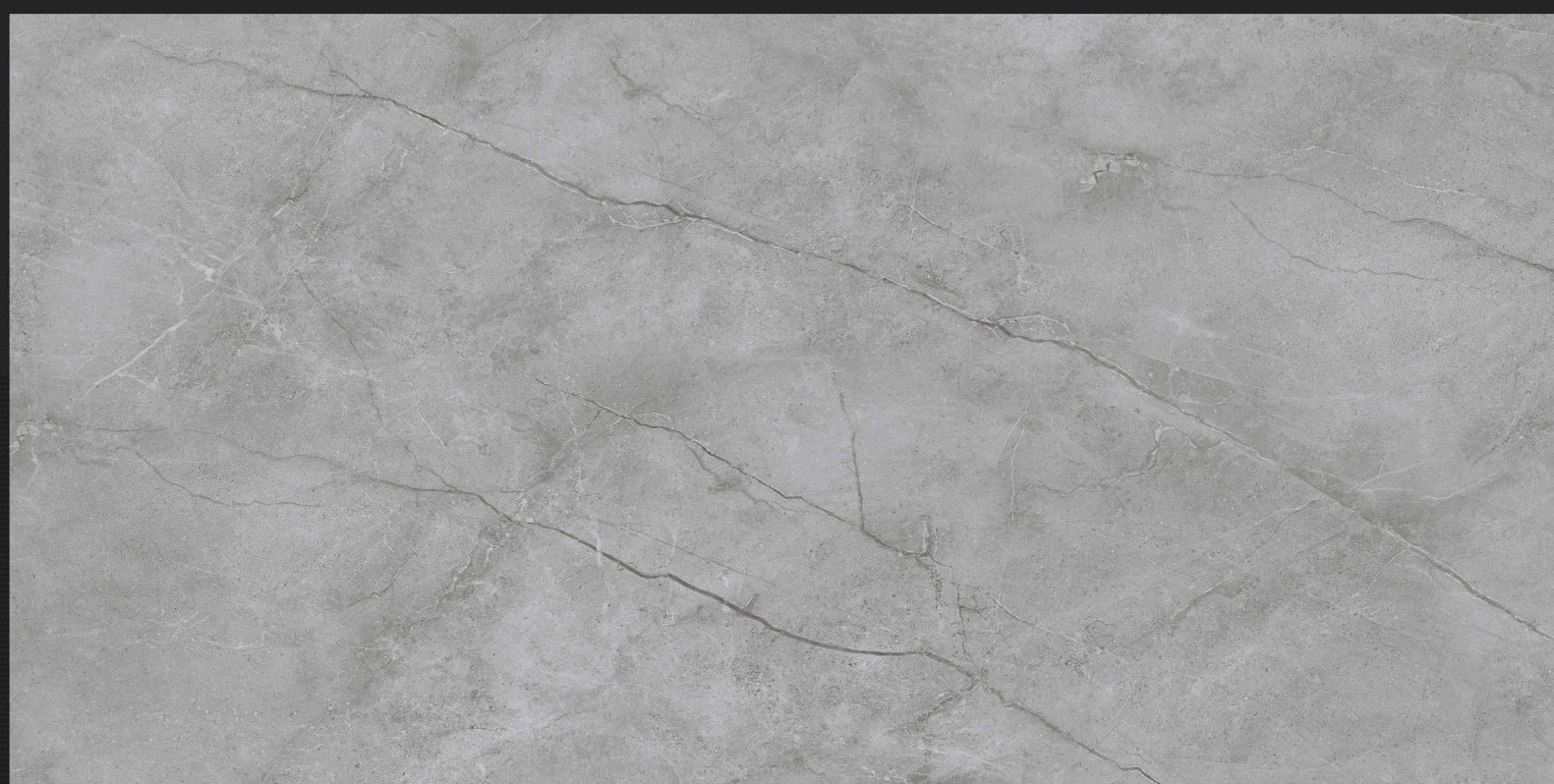
Glossy Finish



HL-1



HL-2

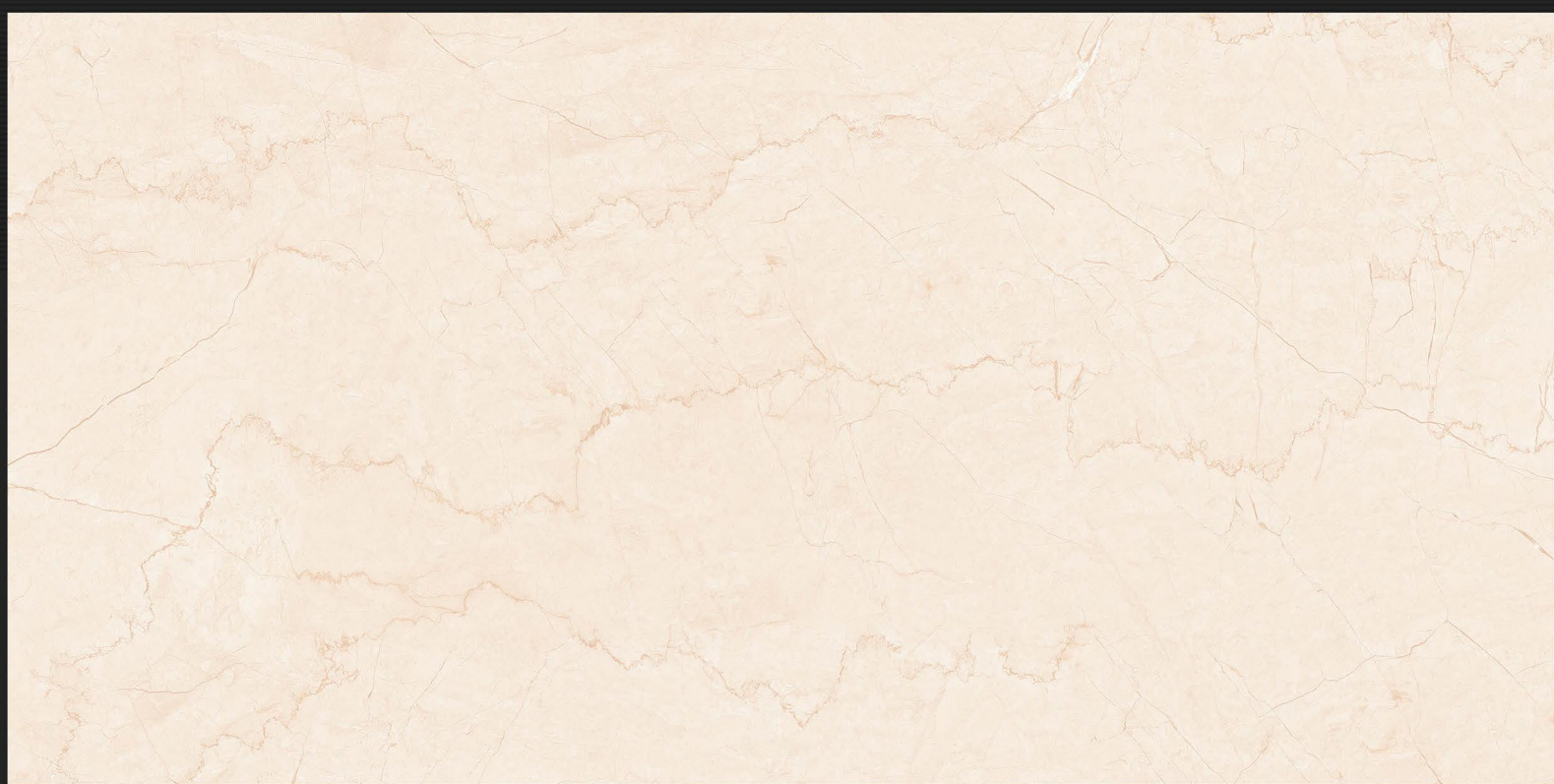


D



D.NO - SM-728

Glossy Finish



L



HL-1



HL-1

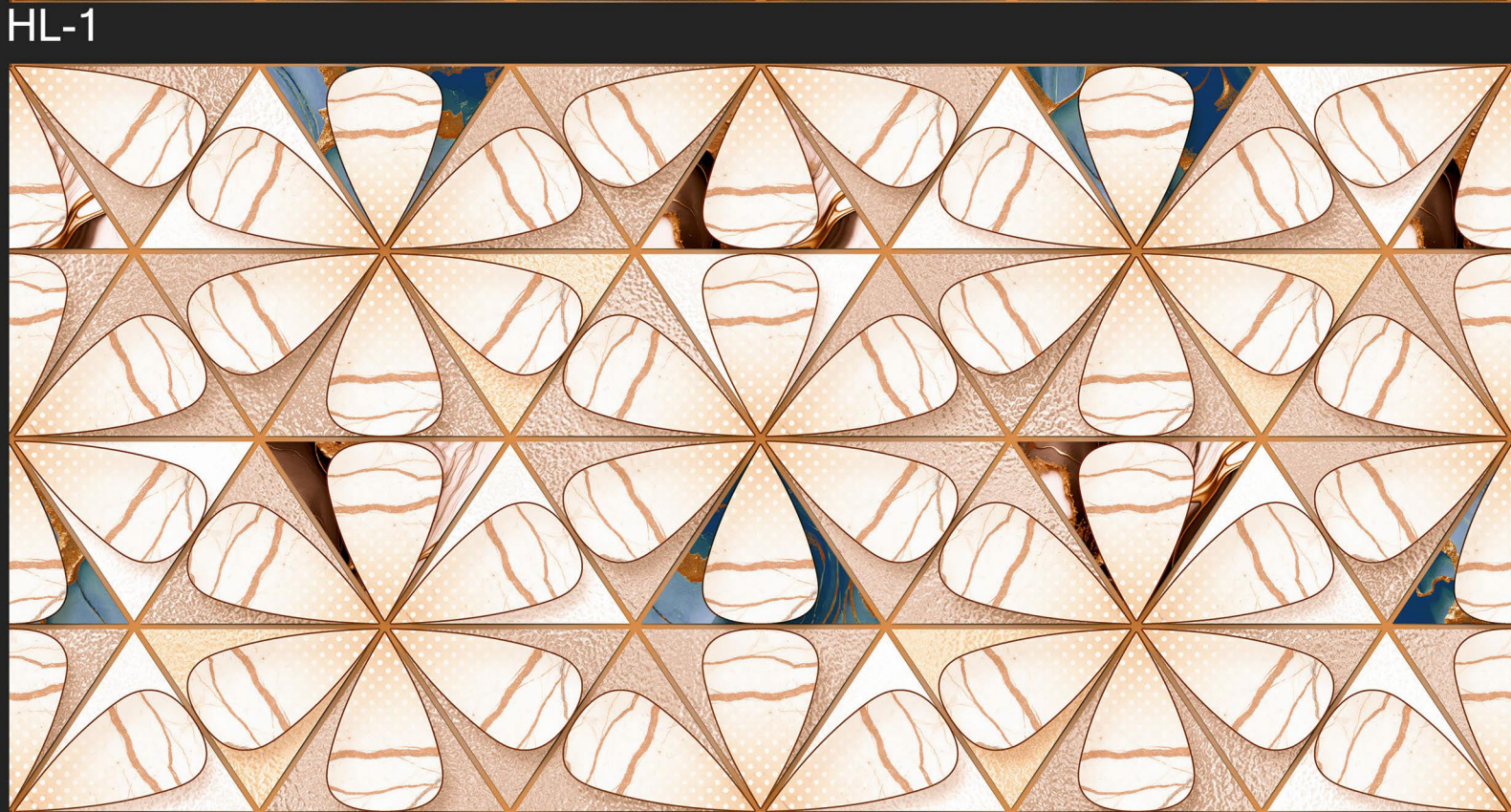
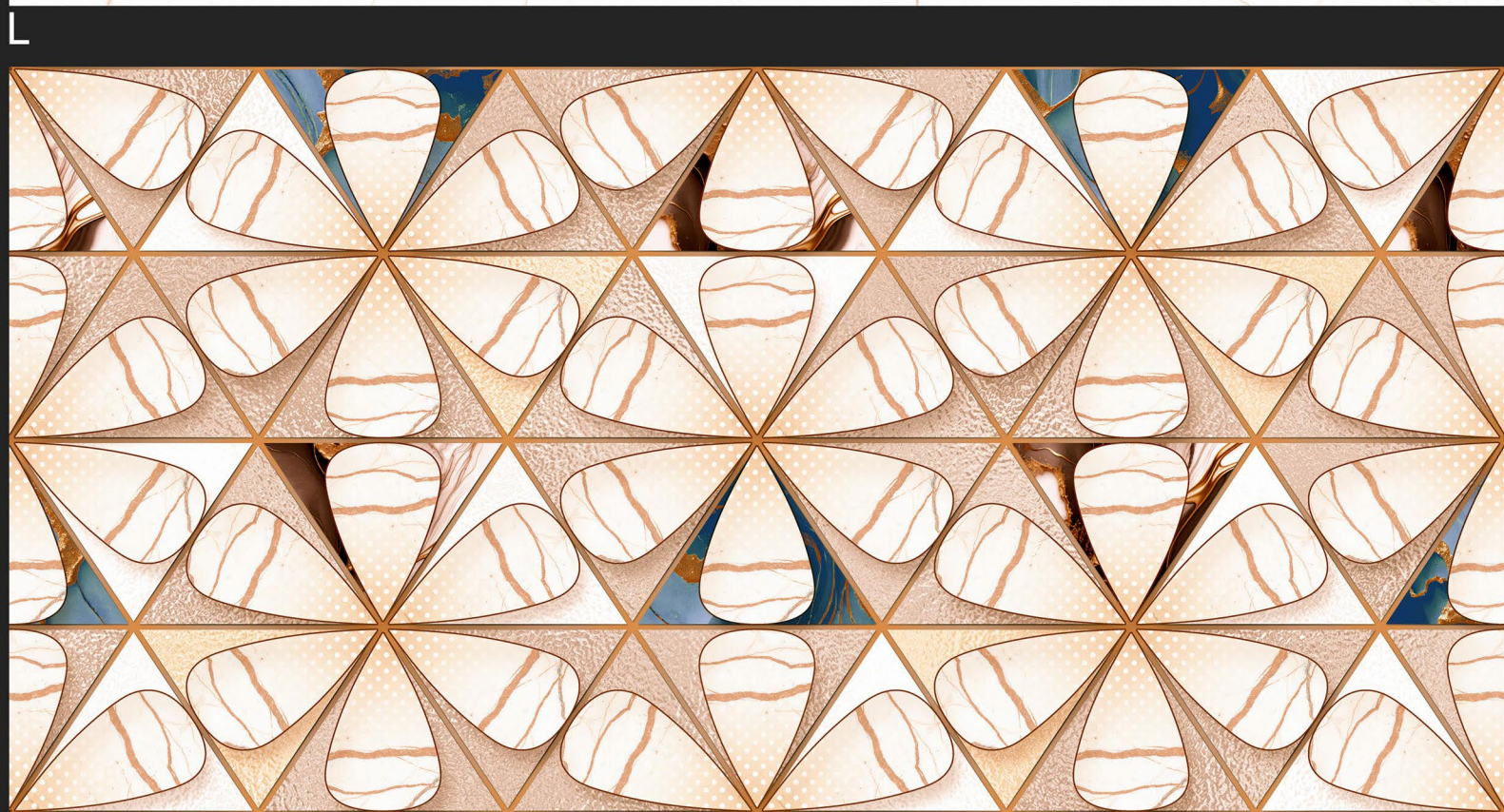
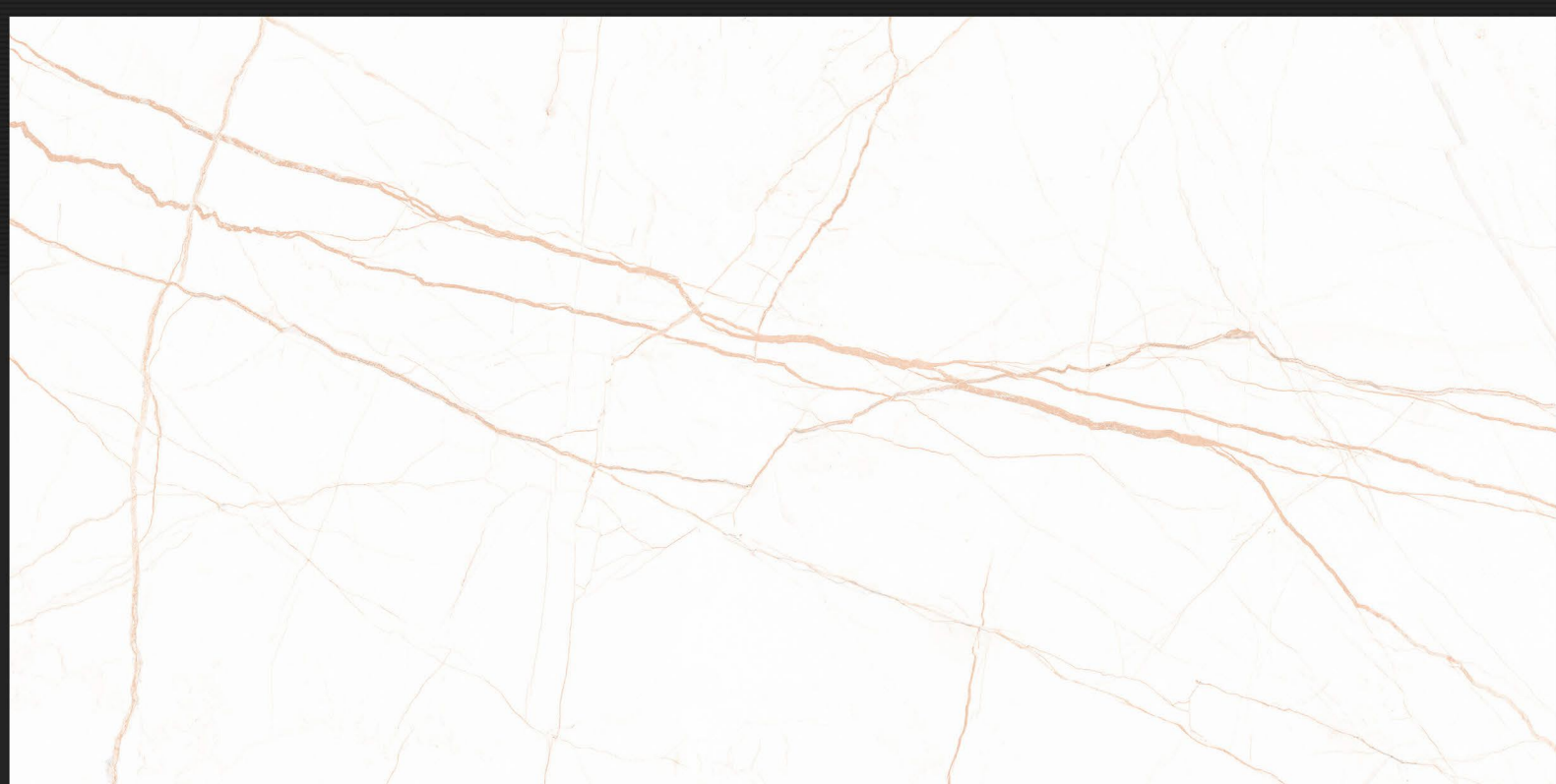


D



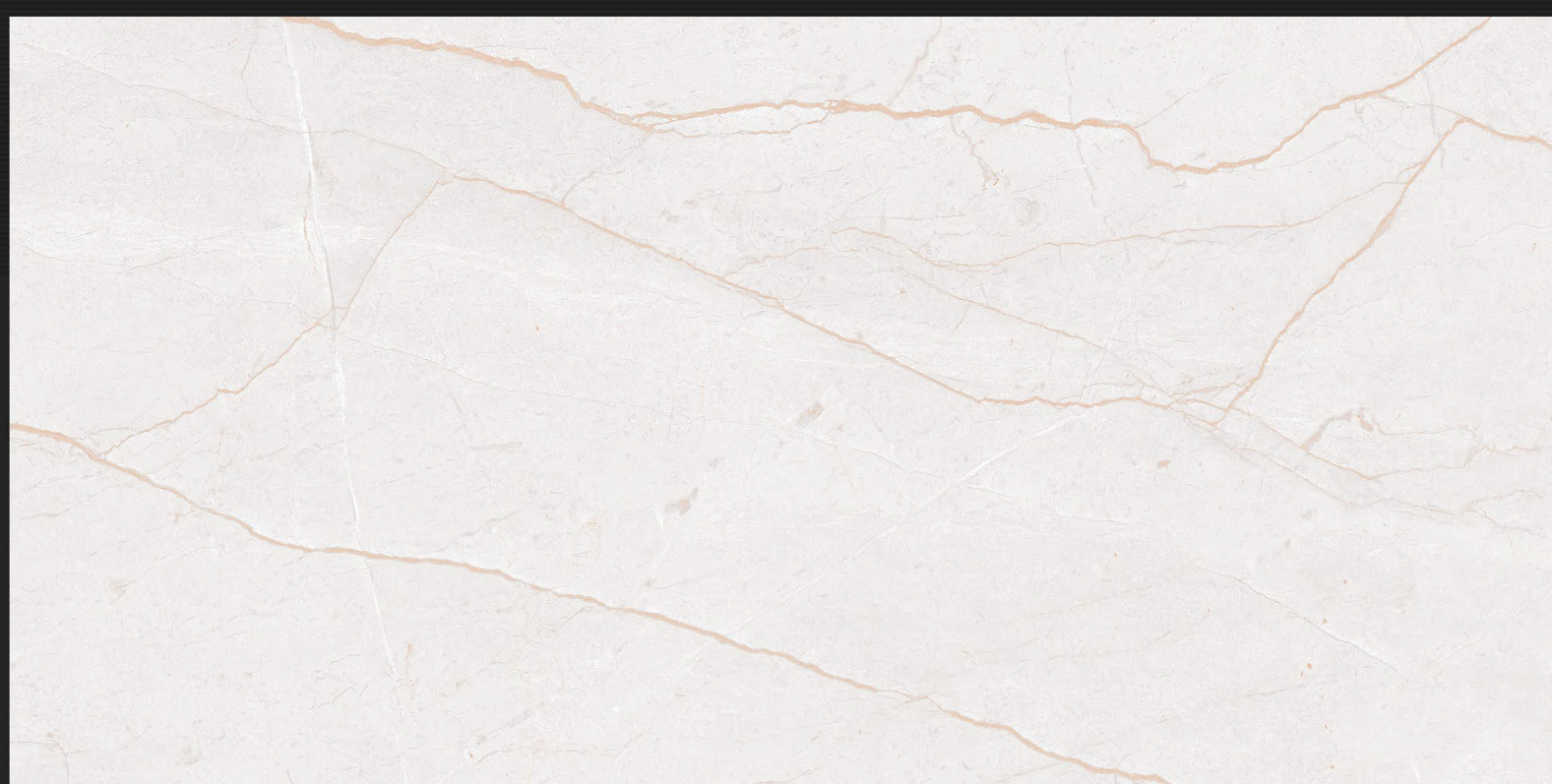
D.NO - SM-729

Glossy Finish



D.NO - SM-730

Glossy Finish



L



HL-1



HL-1



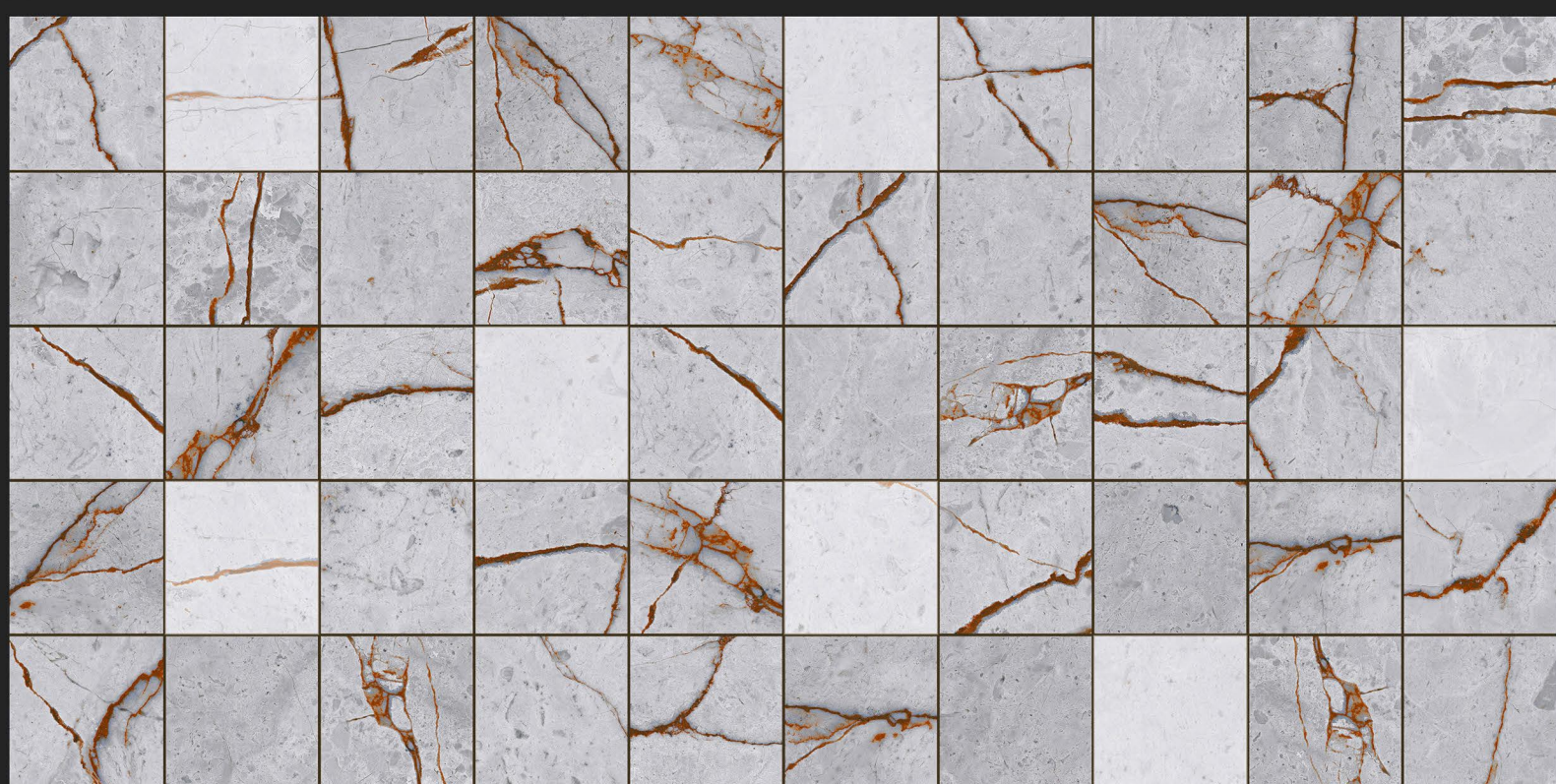
D

D.NO - SM-731

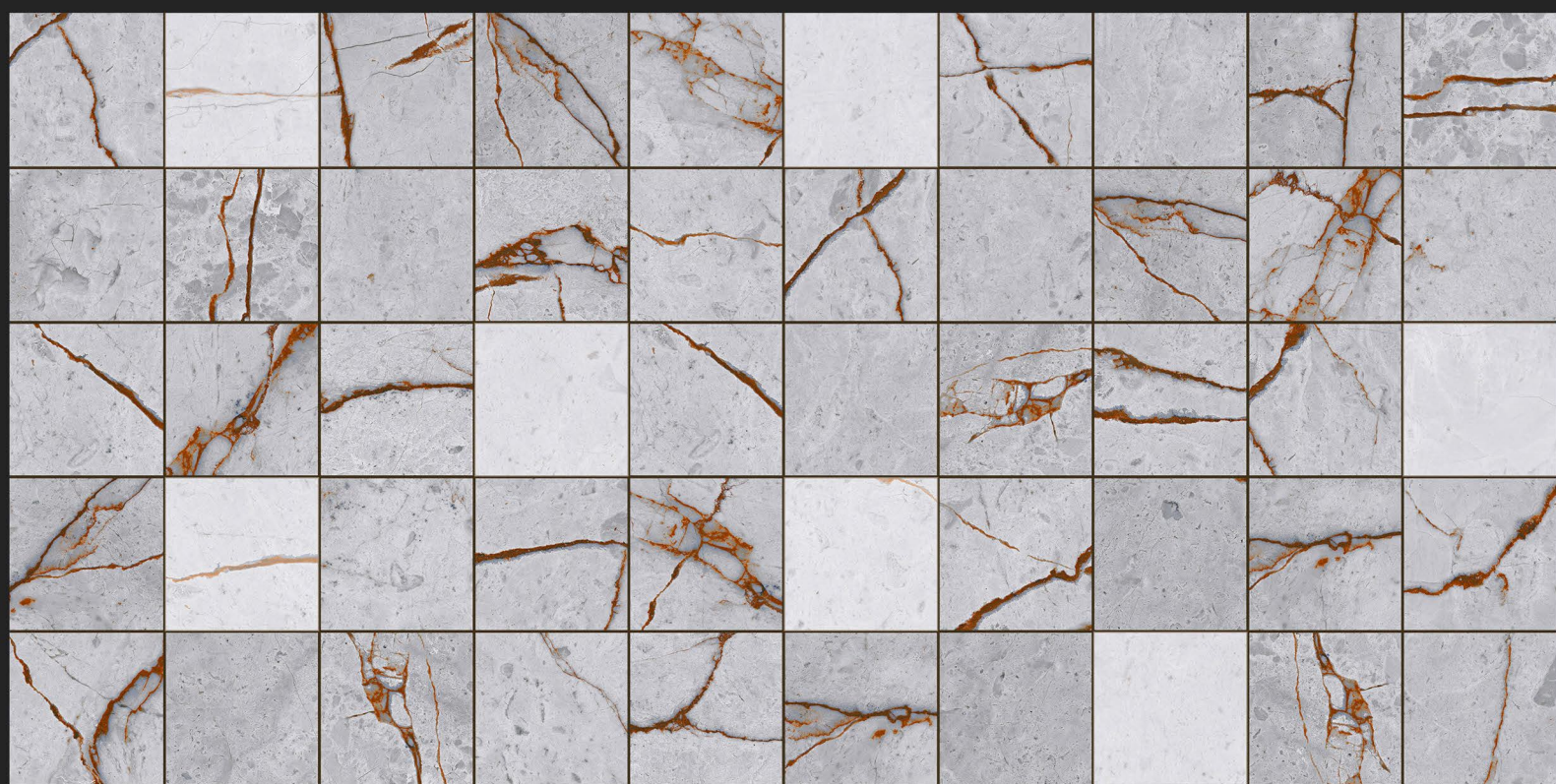
Glossy Finish



L



HL-1



HL-1

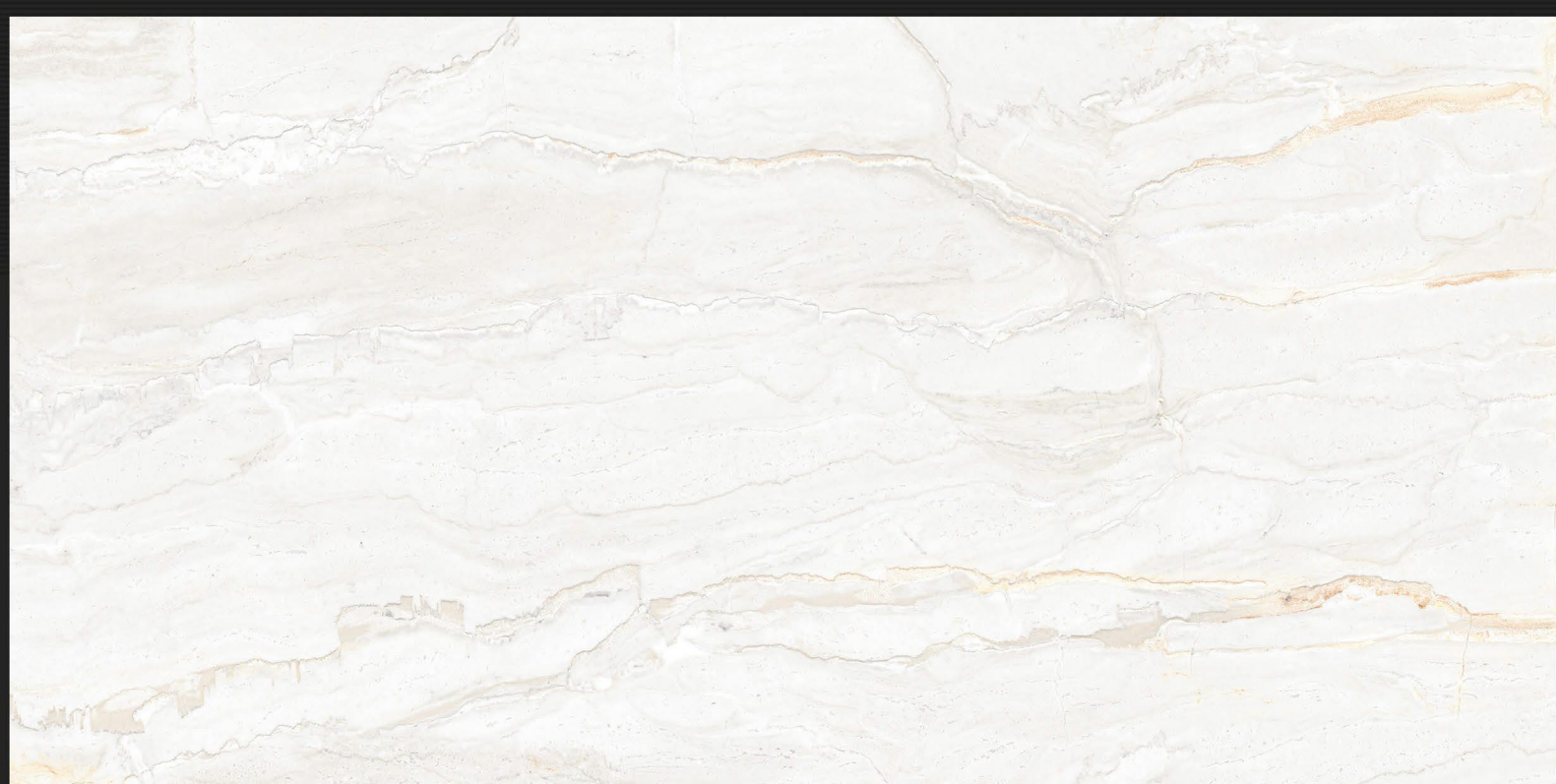


D

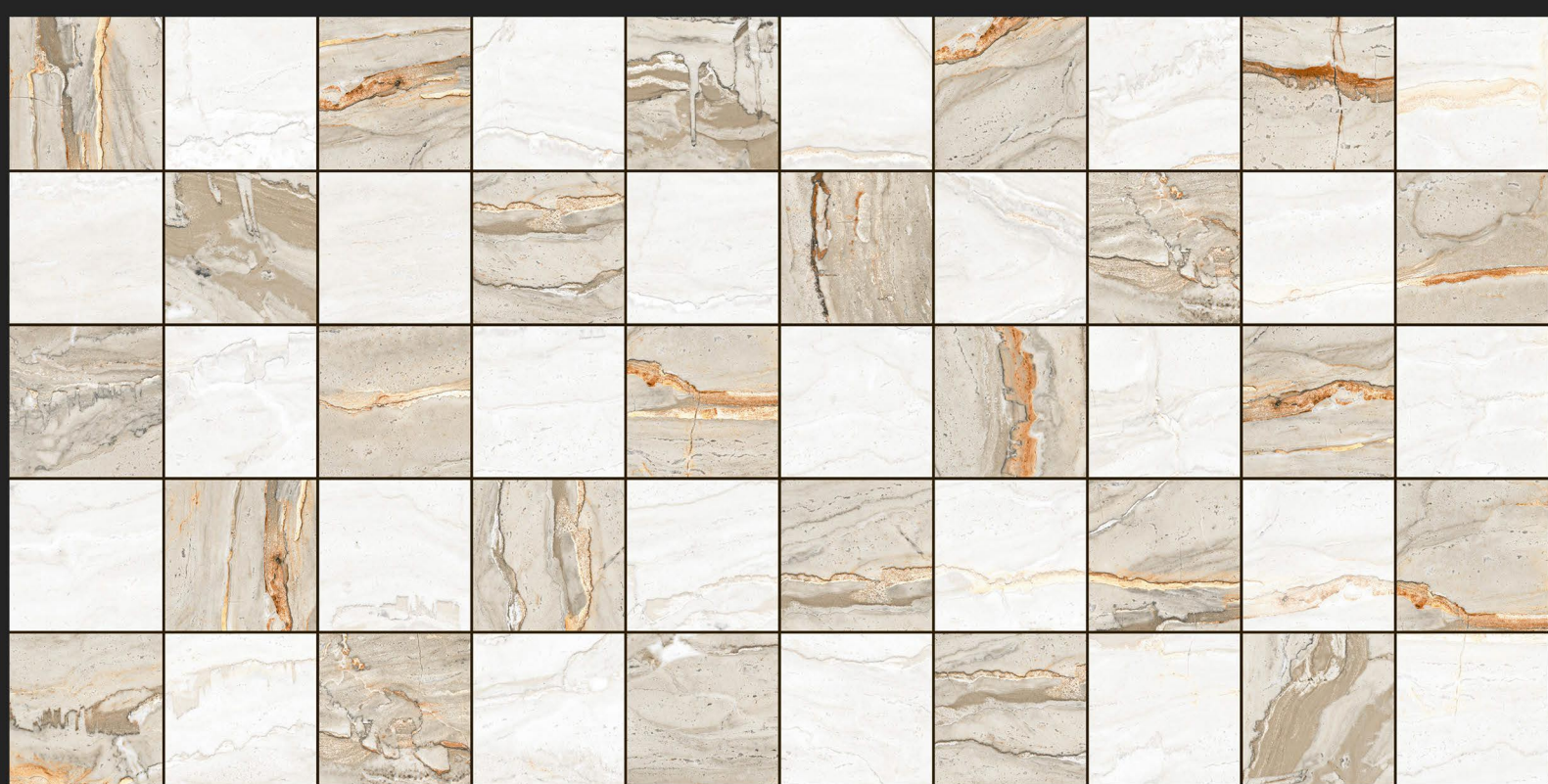


D.NO - SM-732

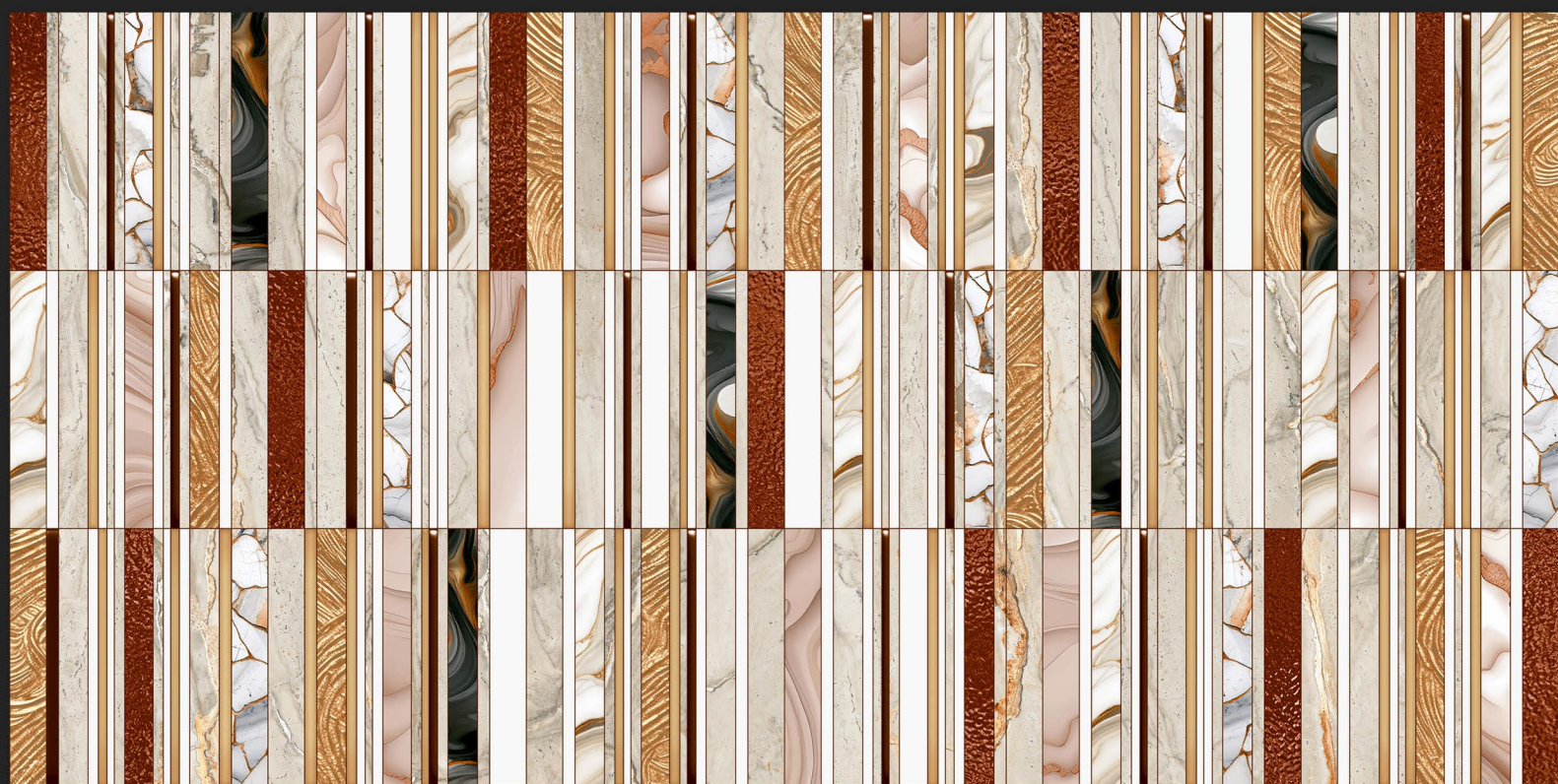
Glossy Finish



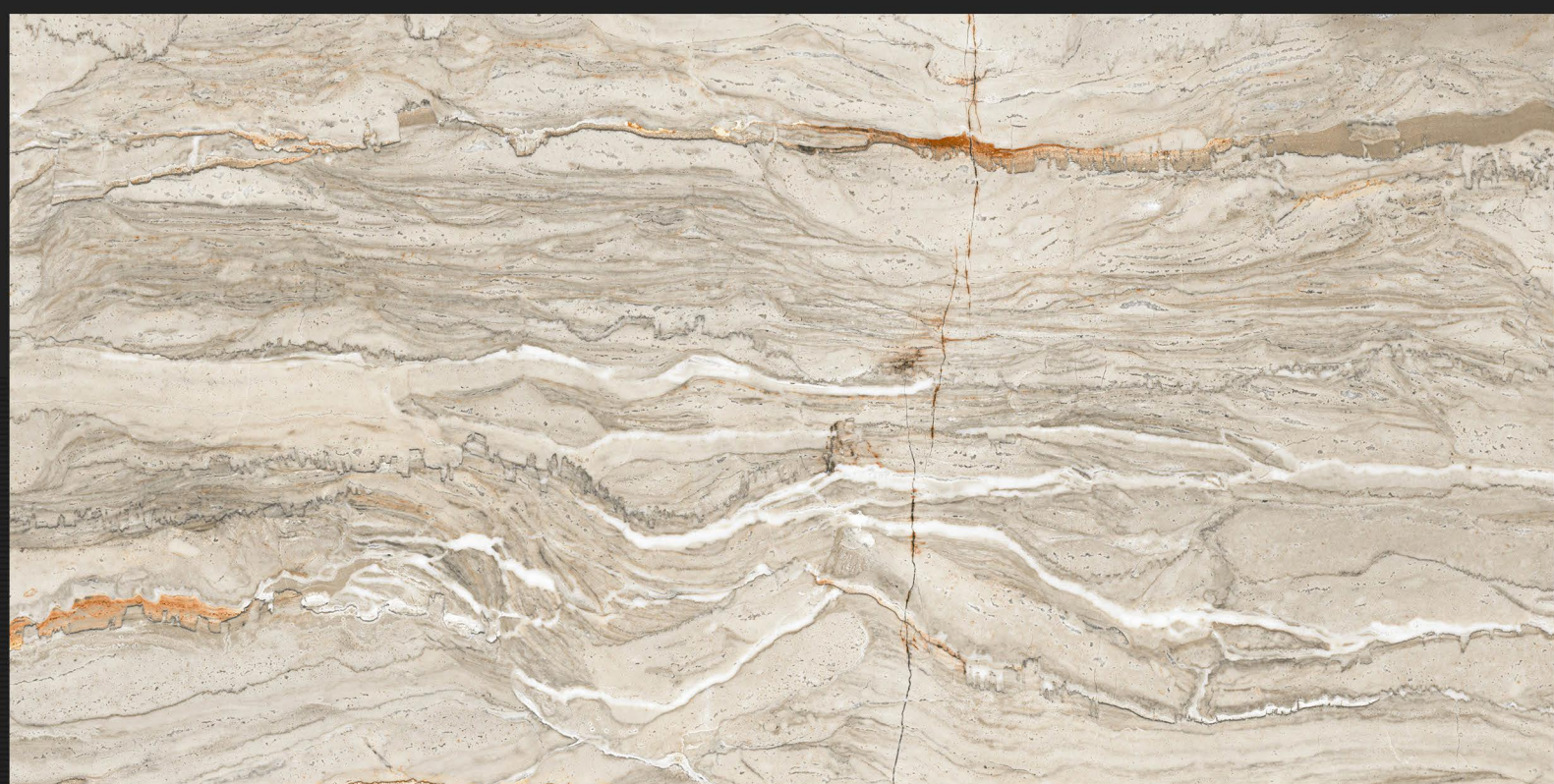
L



HL-1



HL-2

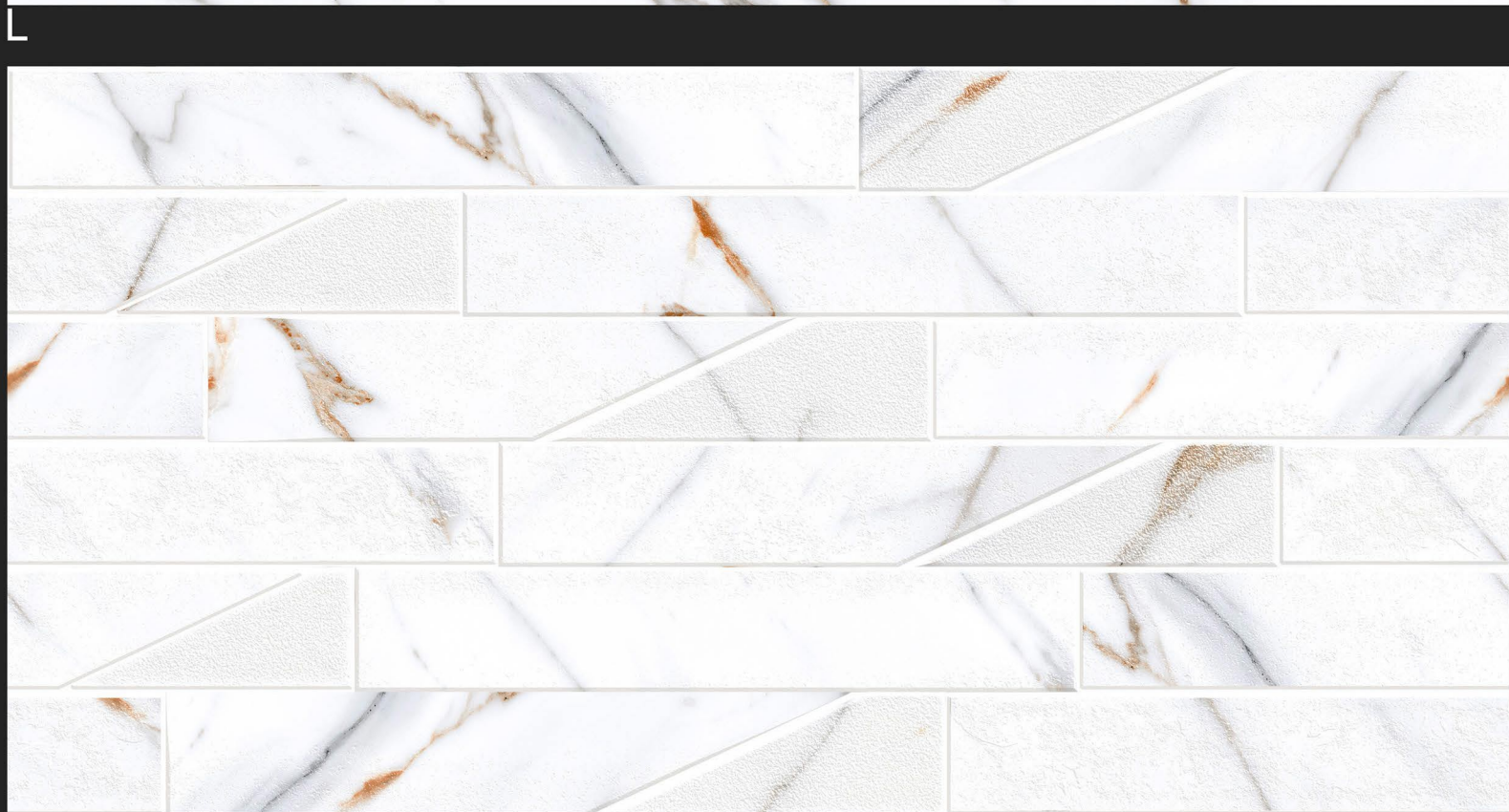


D

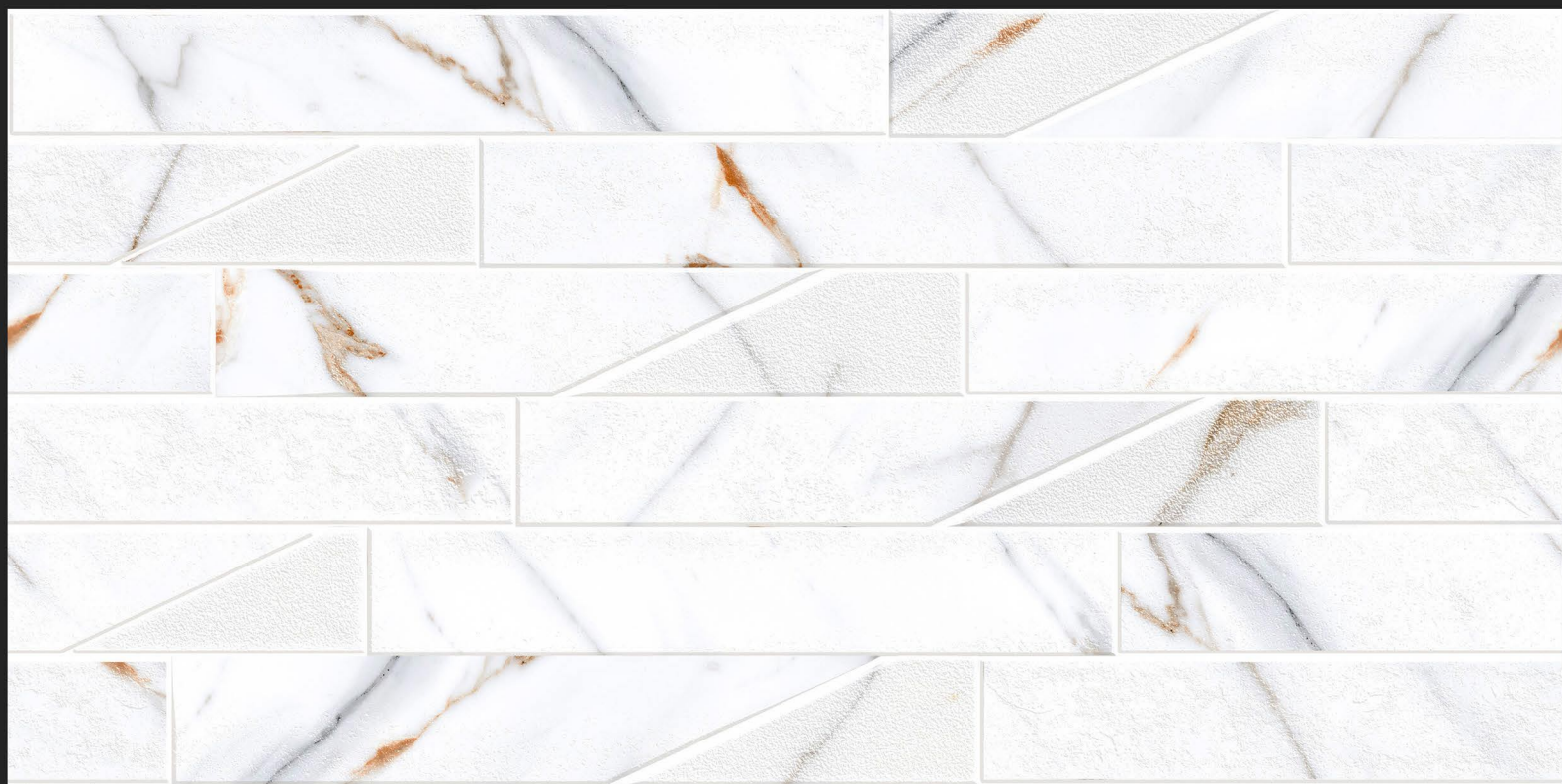


D.NO - SM-733

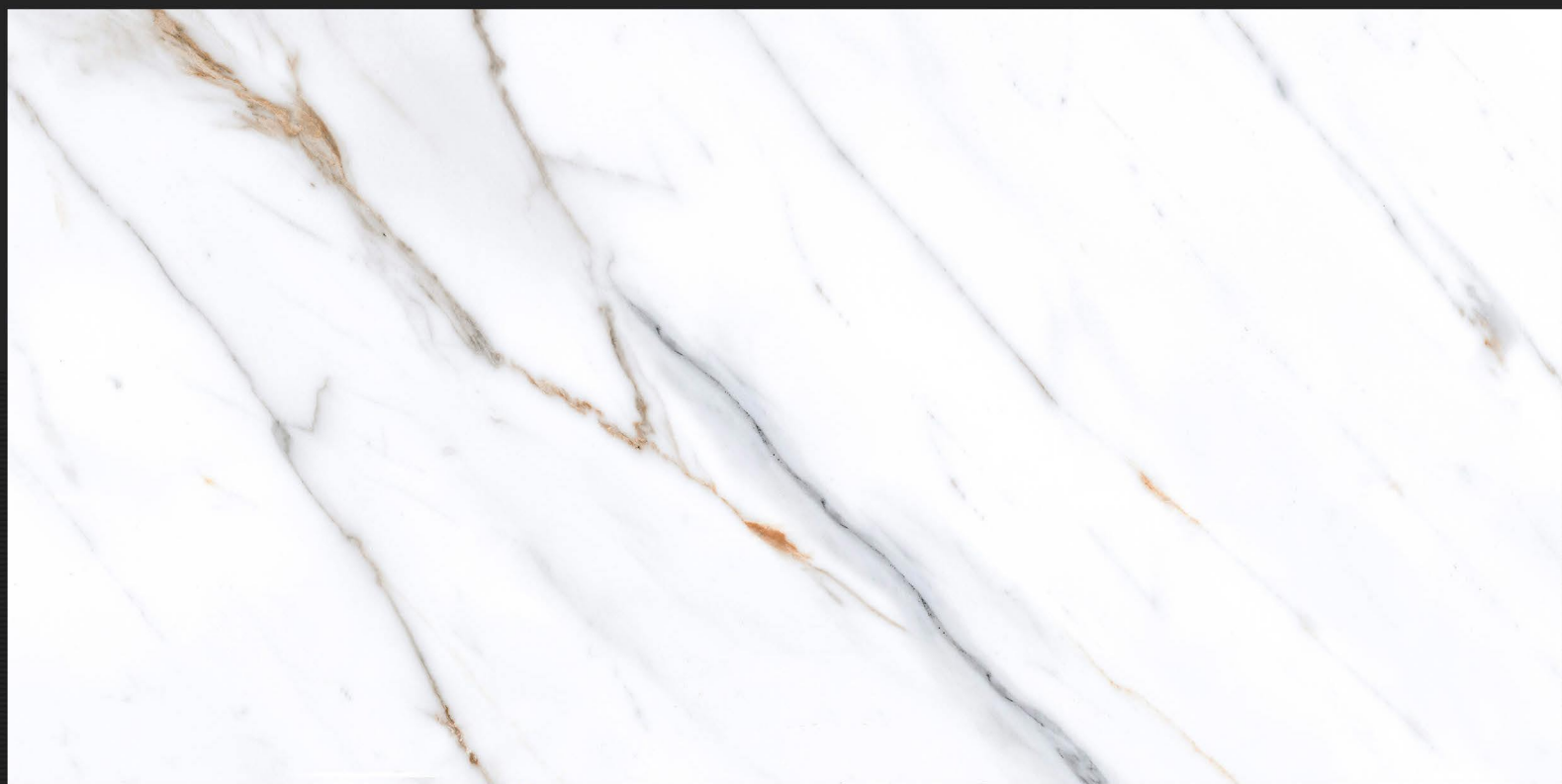
Glossy Finish



HL-1

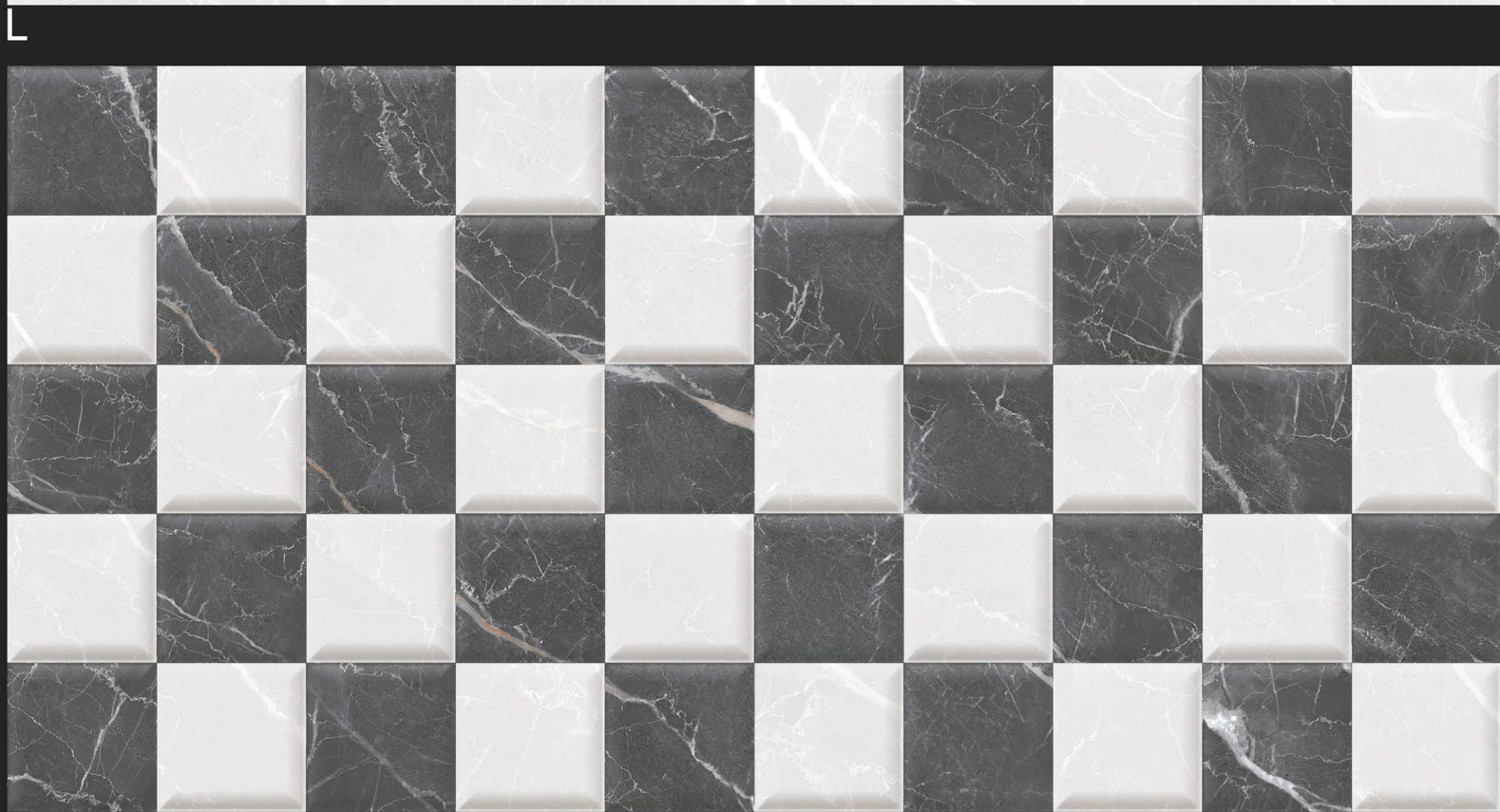
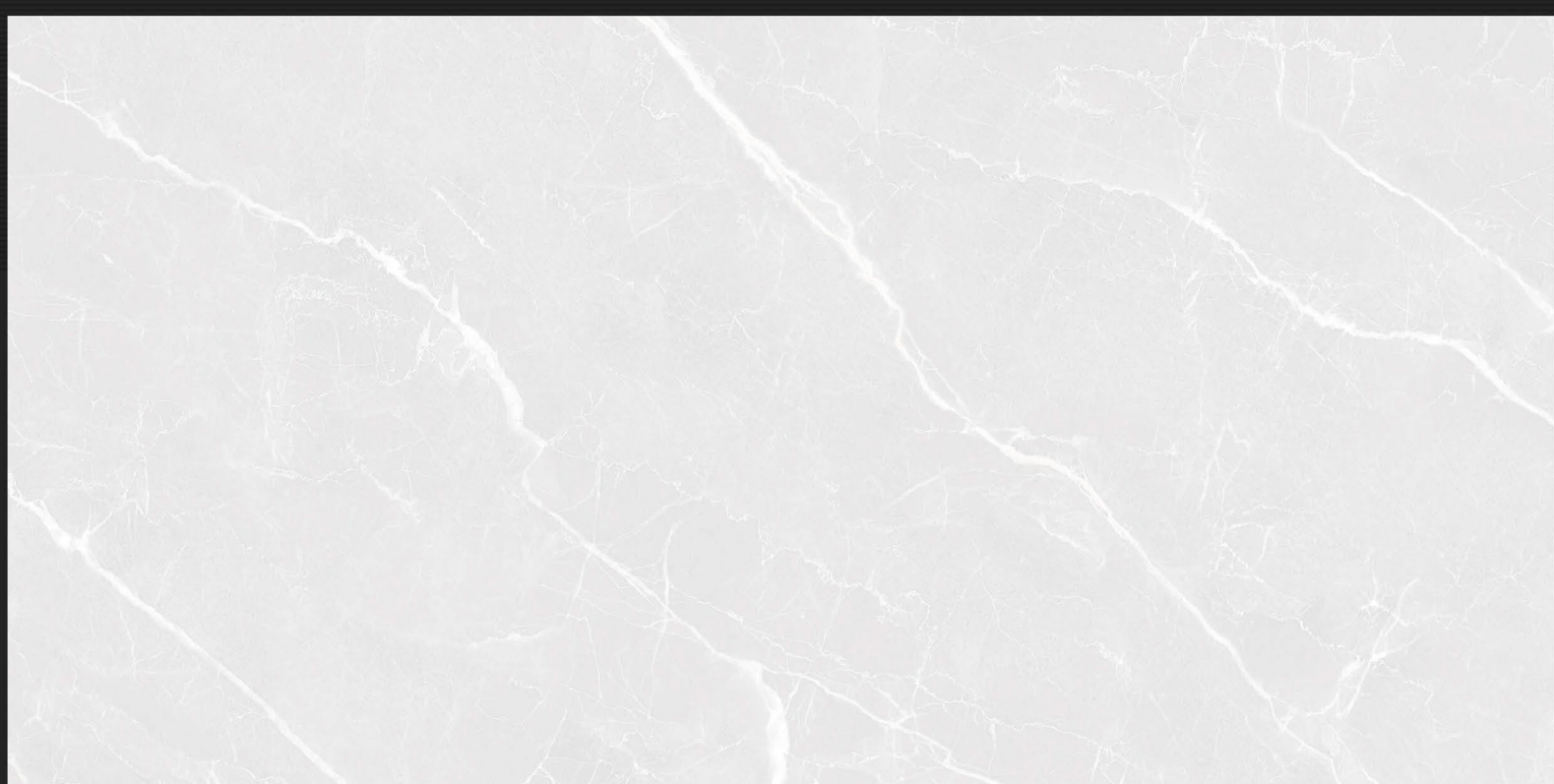


HL-1



D.NO - SM-734

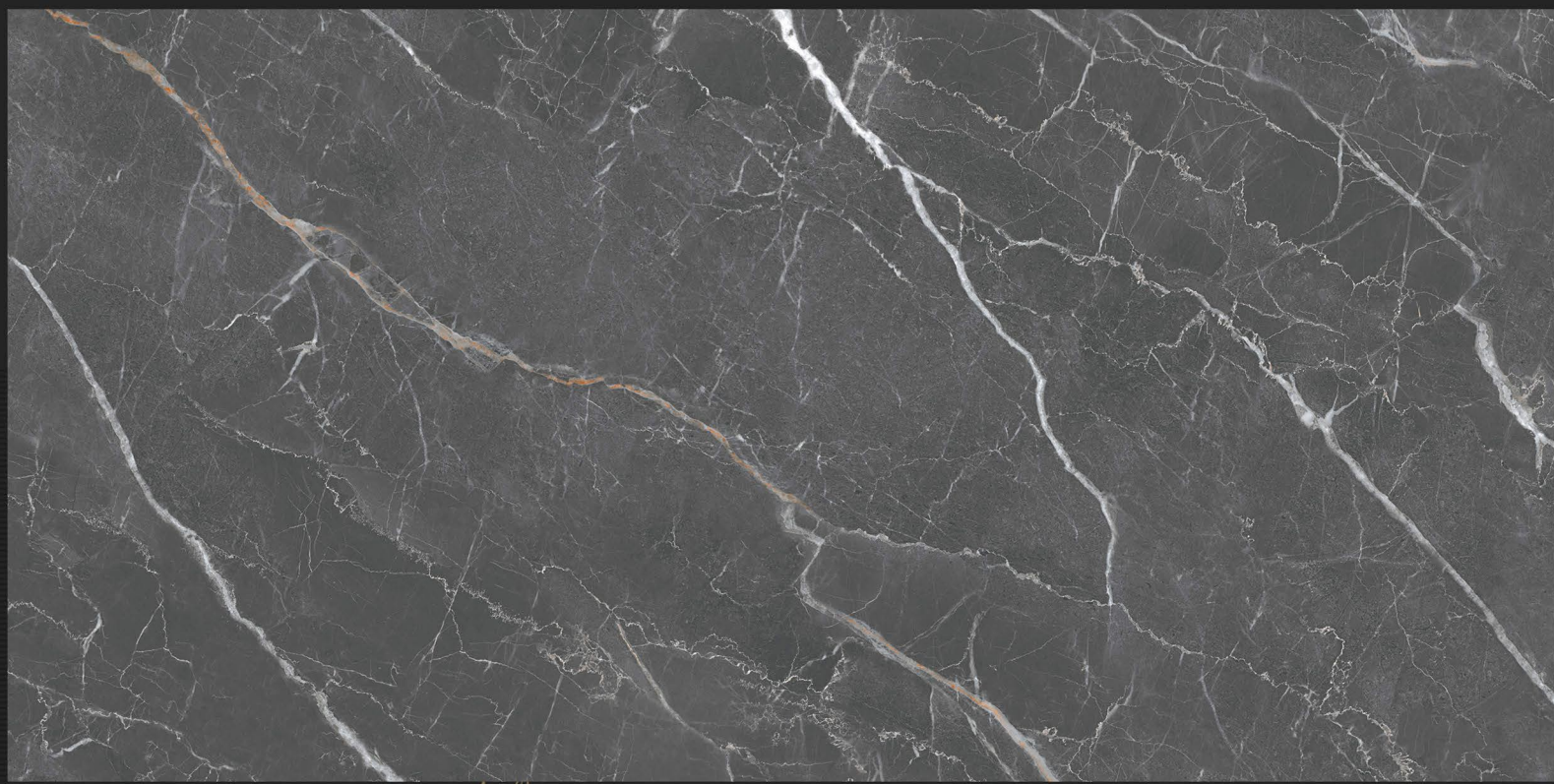
Glossy Finish



HL-1



HL-2

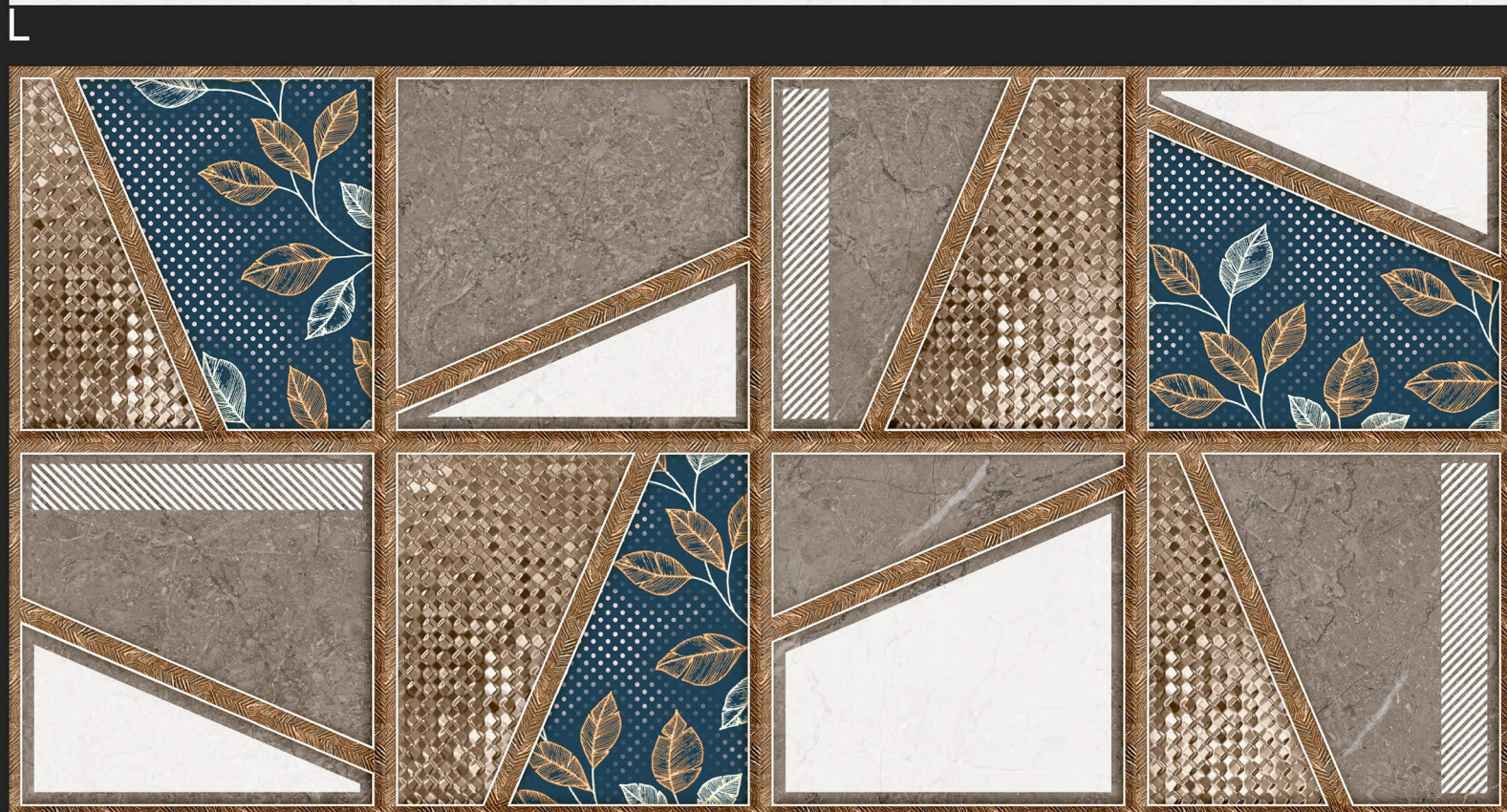
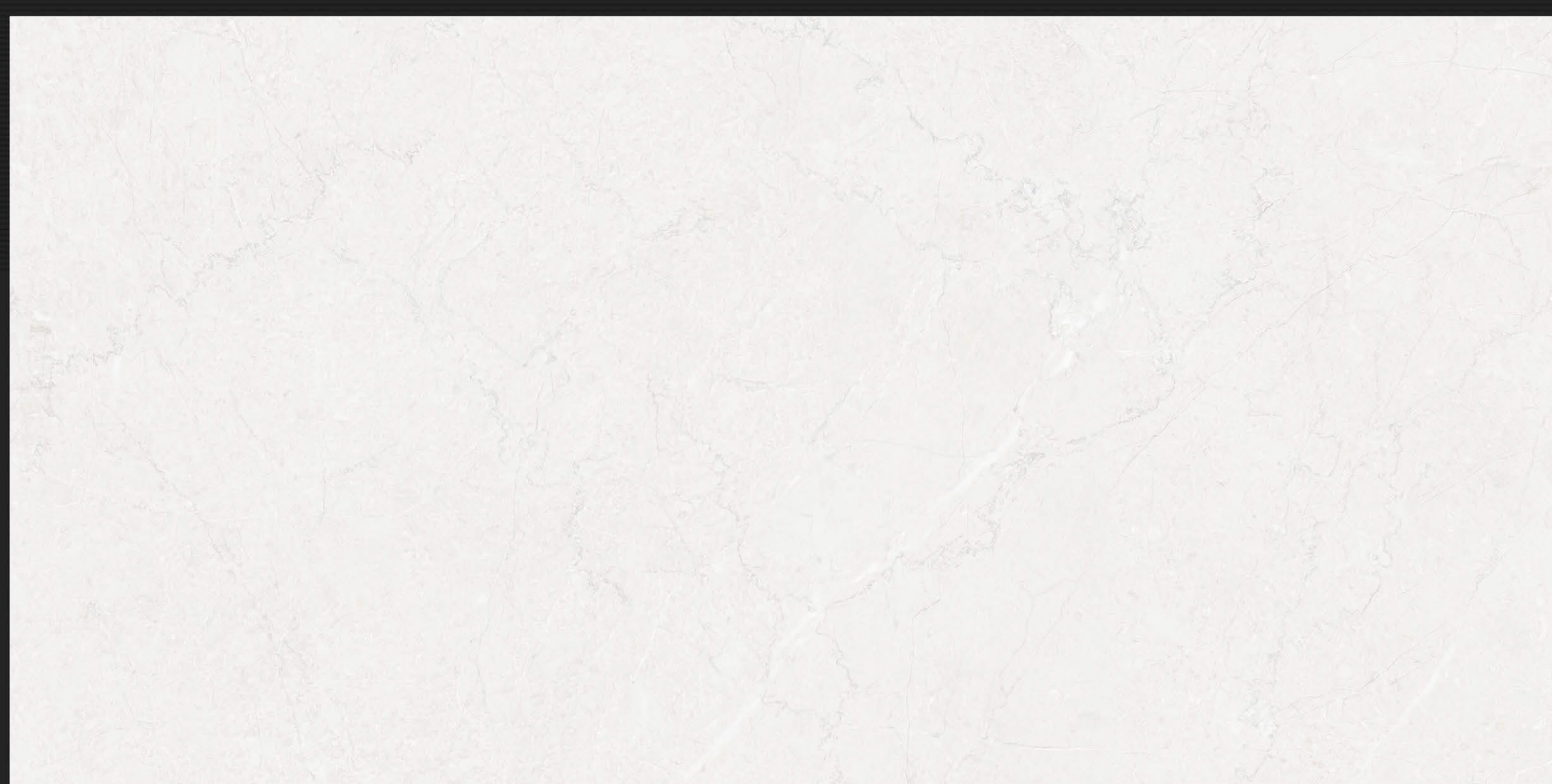


D

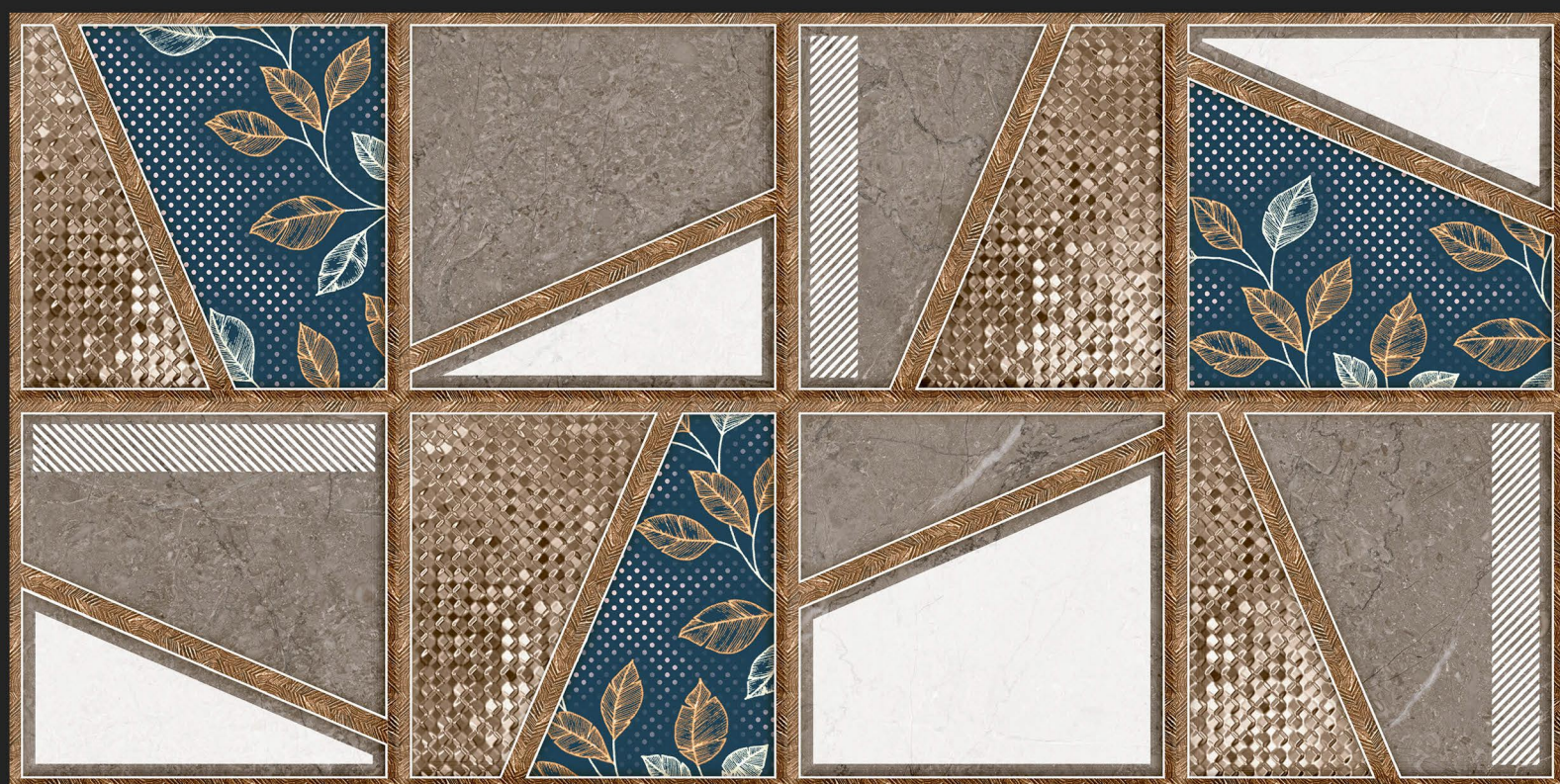


D.NO - SM-735

Glossy Finish



HL-1



HL-1



D





NEON TILE LLP

Corp. Office : G24, Siromany Business Center, B/h. Real Plaza,
8-A National Highway, Morbi-363 641. (Guj.) INDIA.

Call : +91 82382 31831

E : info@neontile.in

W : www.neontile.in

Follow Us :

