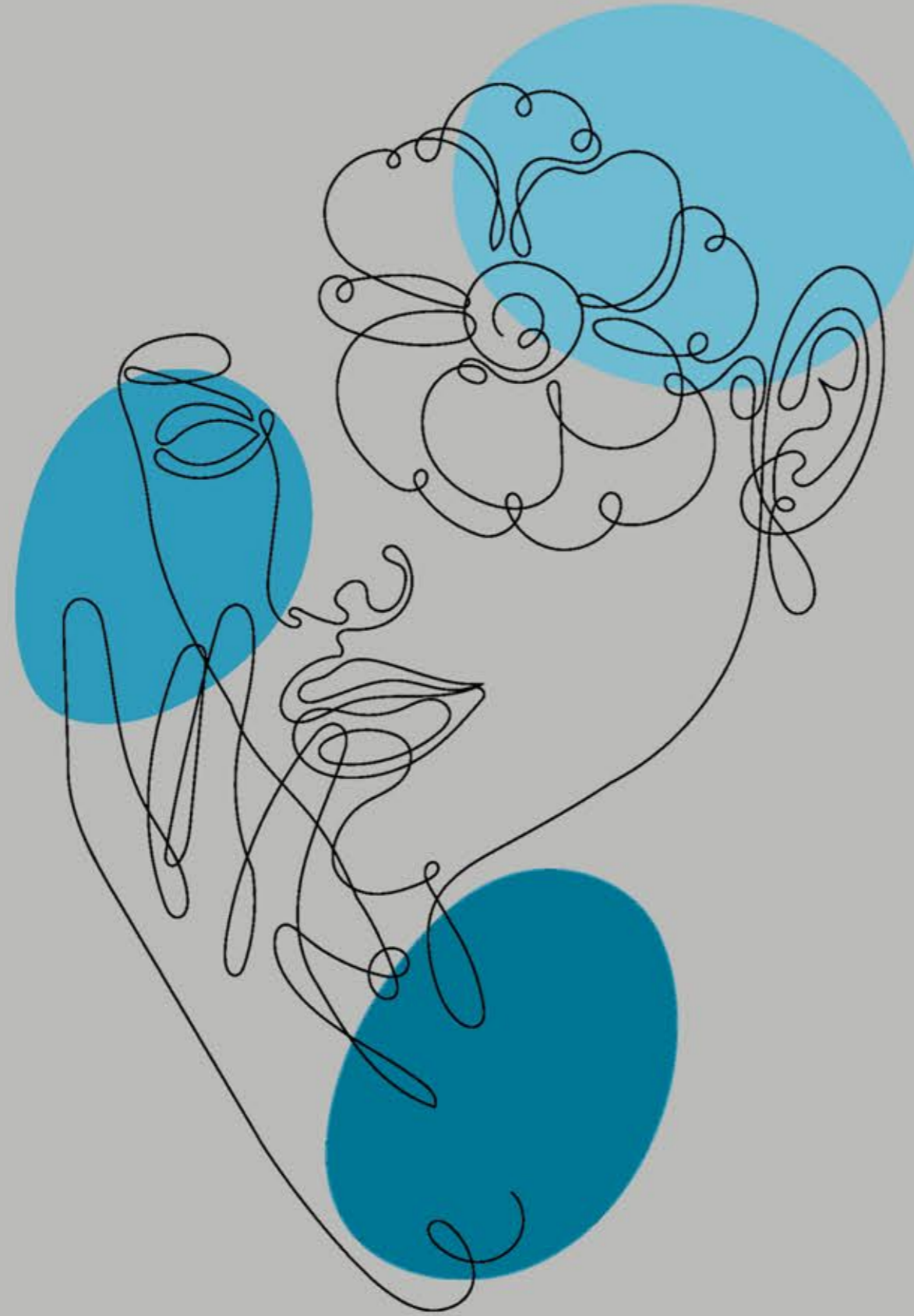


NEONTM
TILE



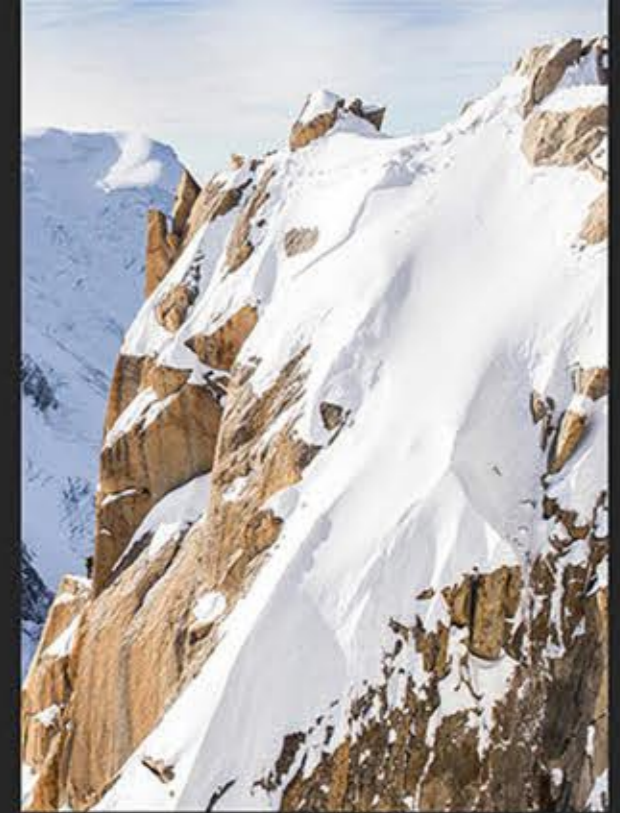
Mfg. & Exporter Of :

- ▶ Wall Tiles
- ▶ Floor Tiles
- ▶ Vitrified Tiles
- ▶ Sanitary Wares

Experience
of natural surface...

SGVT
PORCELAIN TILES
600x600MM

WHITE BODY PORCELAIN TILES

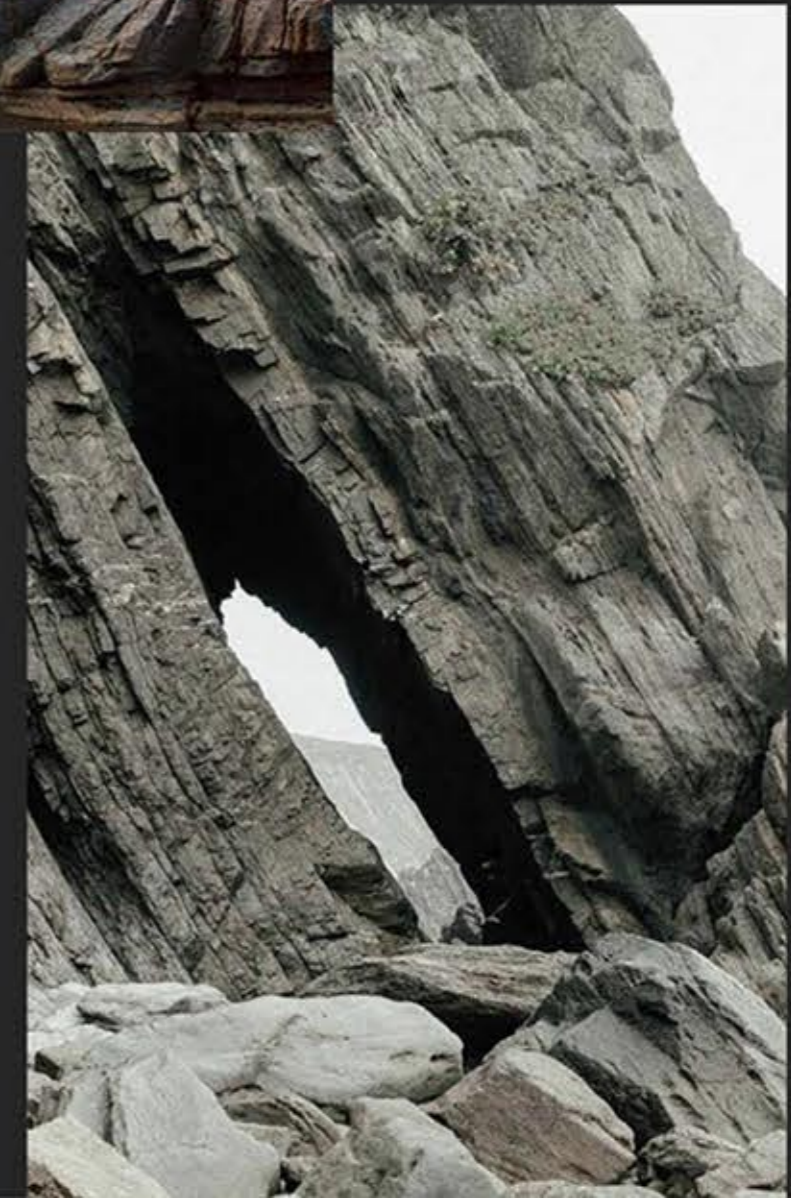


Tiles emerged through passion to make eco friendly engineered stone products without hurting the nature, almost all raw materials used are from recycled products, hence making the product eco friendly.

Tiles have not been created just to satisfy the need for style and design, but also meet all performance tests and have shown excellent outdoor and indoor durability, making them suitable for any weather & climate conditions.



Trust, quality and reliability have been the watchwords of TILES and they plan to continue fulfilling the expectation of their vast array of customers. Total customer satisfaction via adoption of quality management system in all spheres of activity guarantee adherence to predecided standard. The company nurtures each relationship be it with the trade, consumer or supplies. This has established TILES as a reliable and trustworthy entity capable of overcoming market challenges.



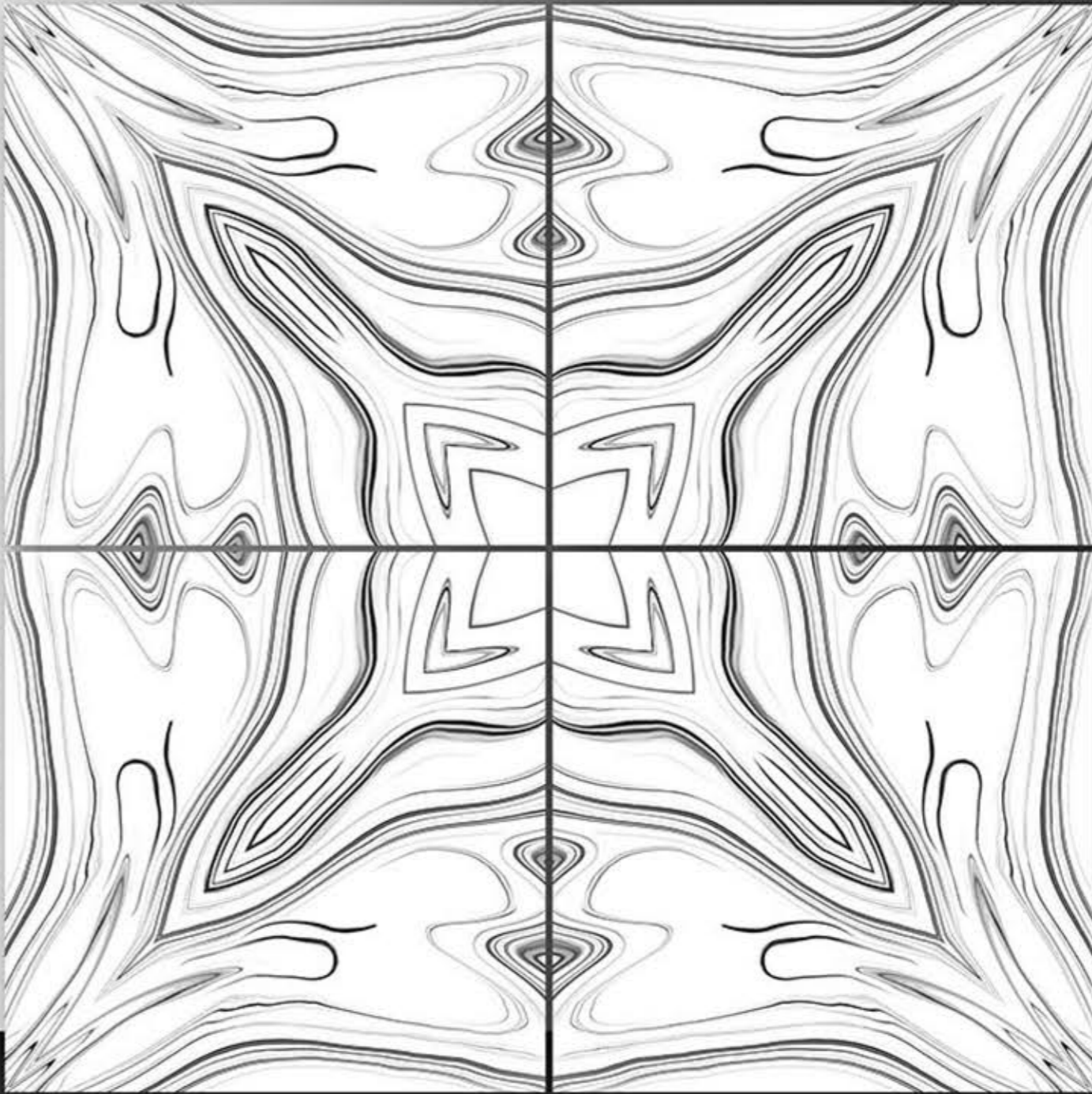
PORCELAIN TILES
600X600MM

5001

NEONTM
TILE



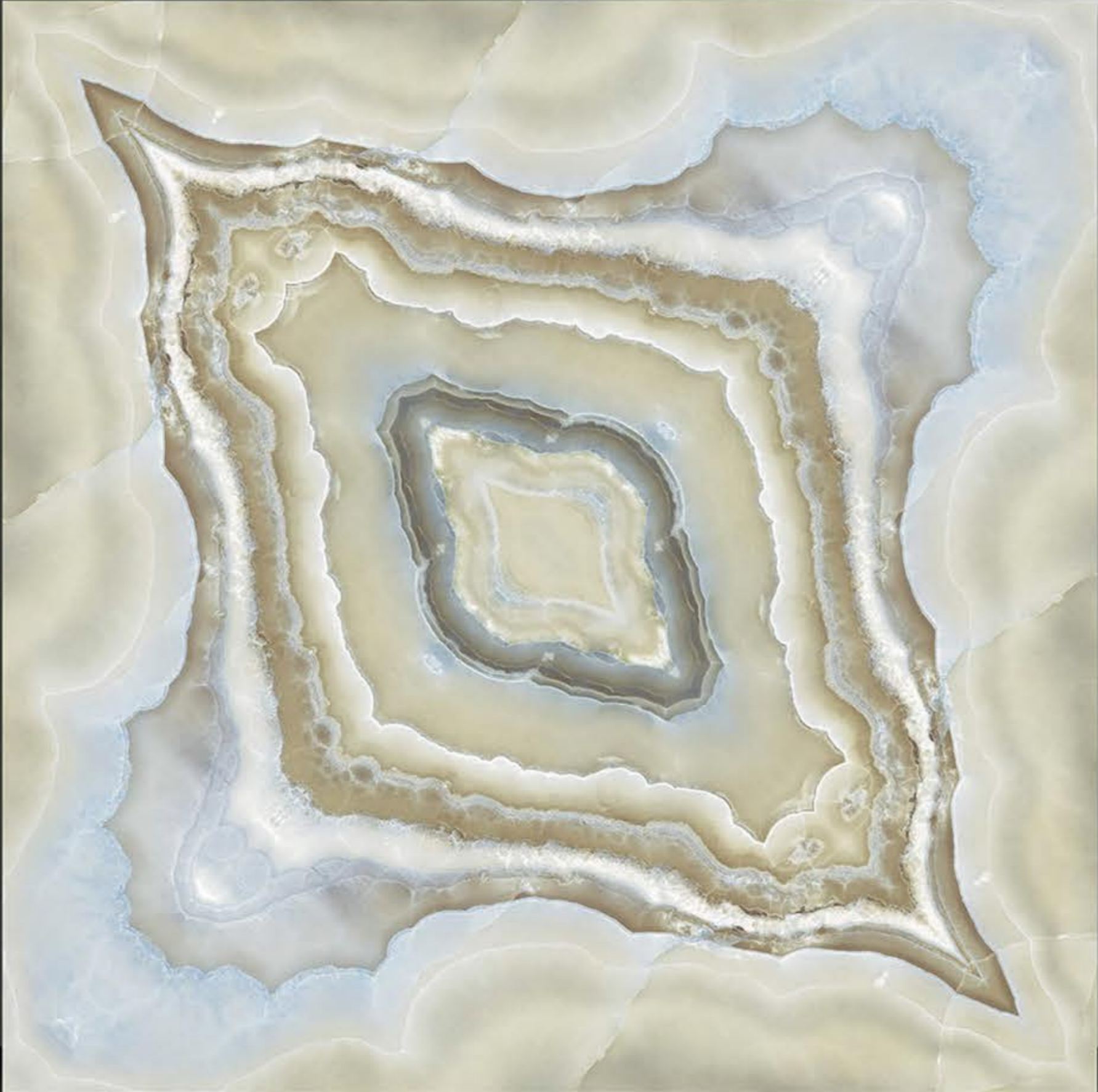
Series
Book Match



PORCELAIN TILES
600X600MM

5002

NEONTM
TILE



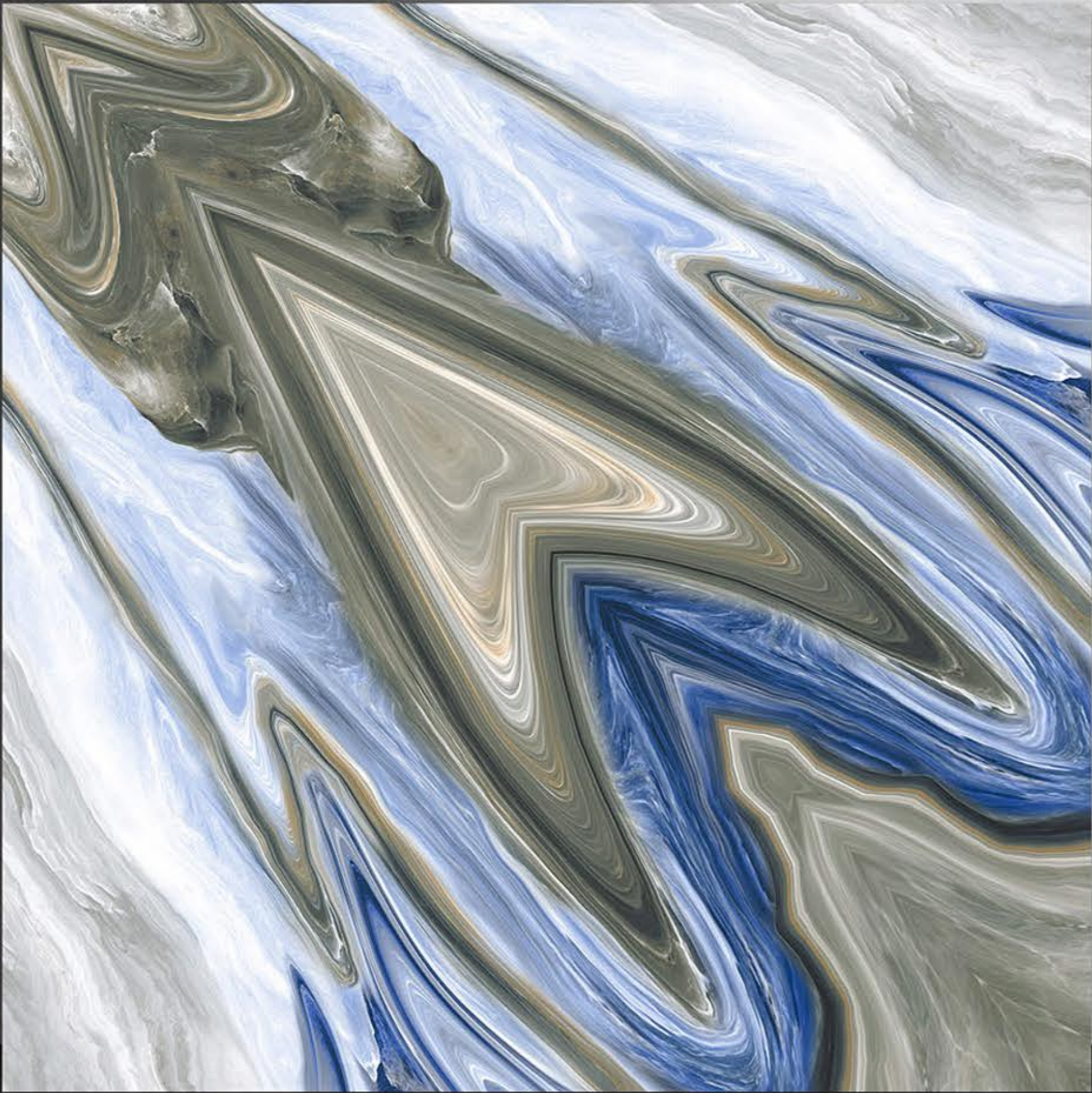
Series
Book Match



PORCELAIN TILES
600X600MM

5004

NEONTM
TILE



Series
Book Match



PORCELAIN TILES
600X600MM

5005

NEONTM
TILE



Series
Book Match



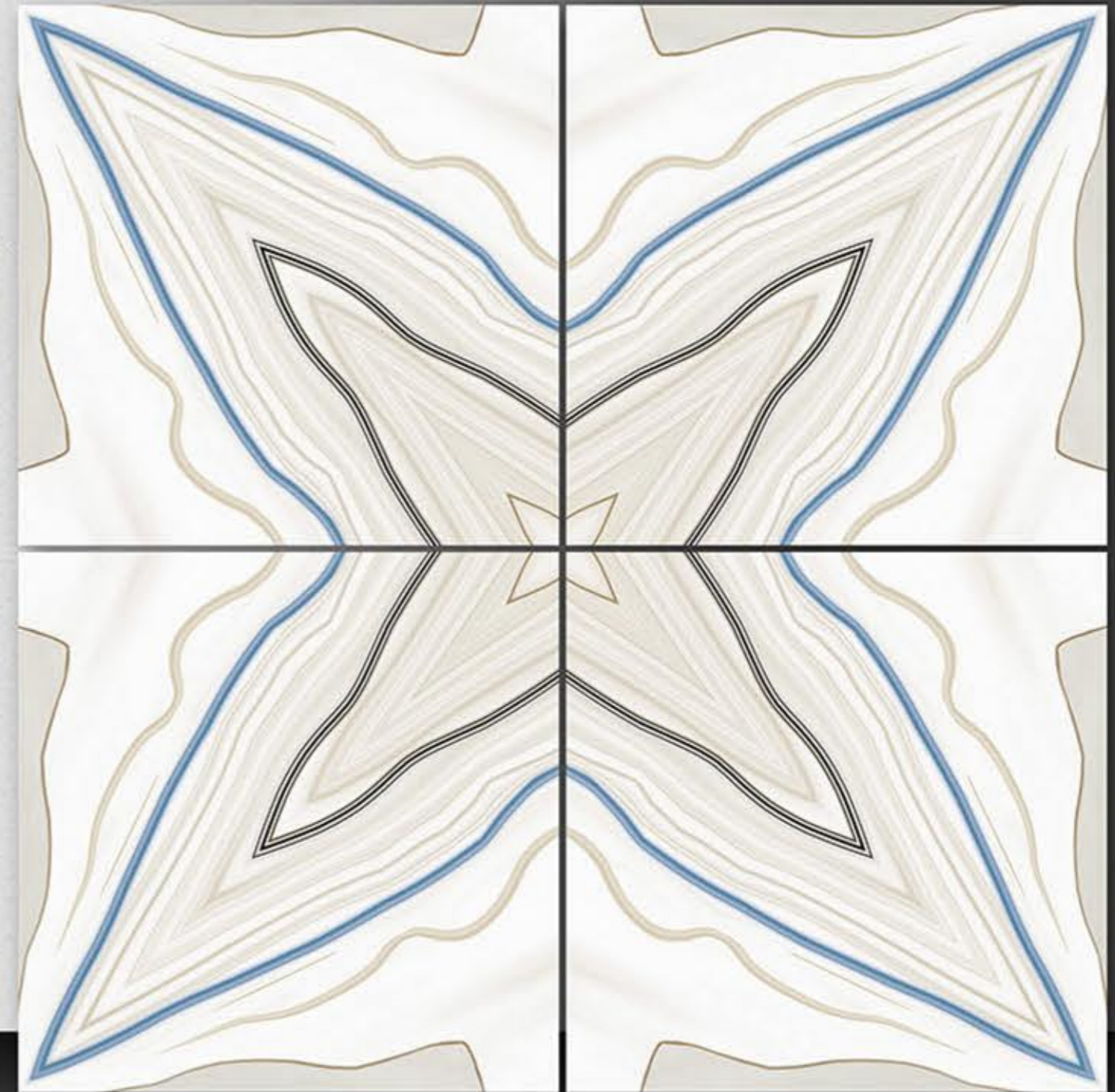
PORCELAIN TILES
600X600MM

5010

NEONTM
TILE



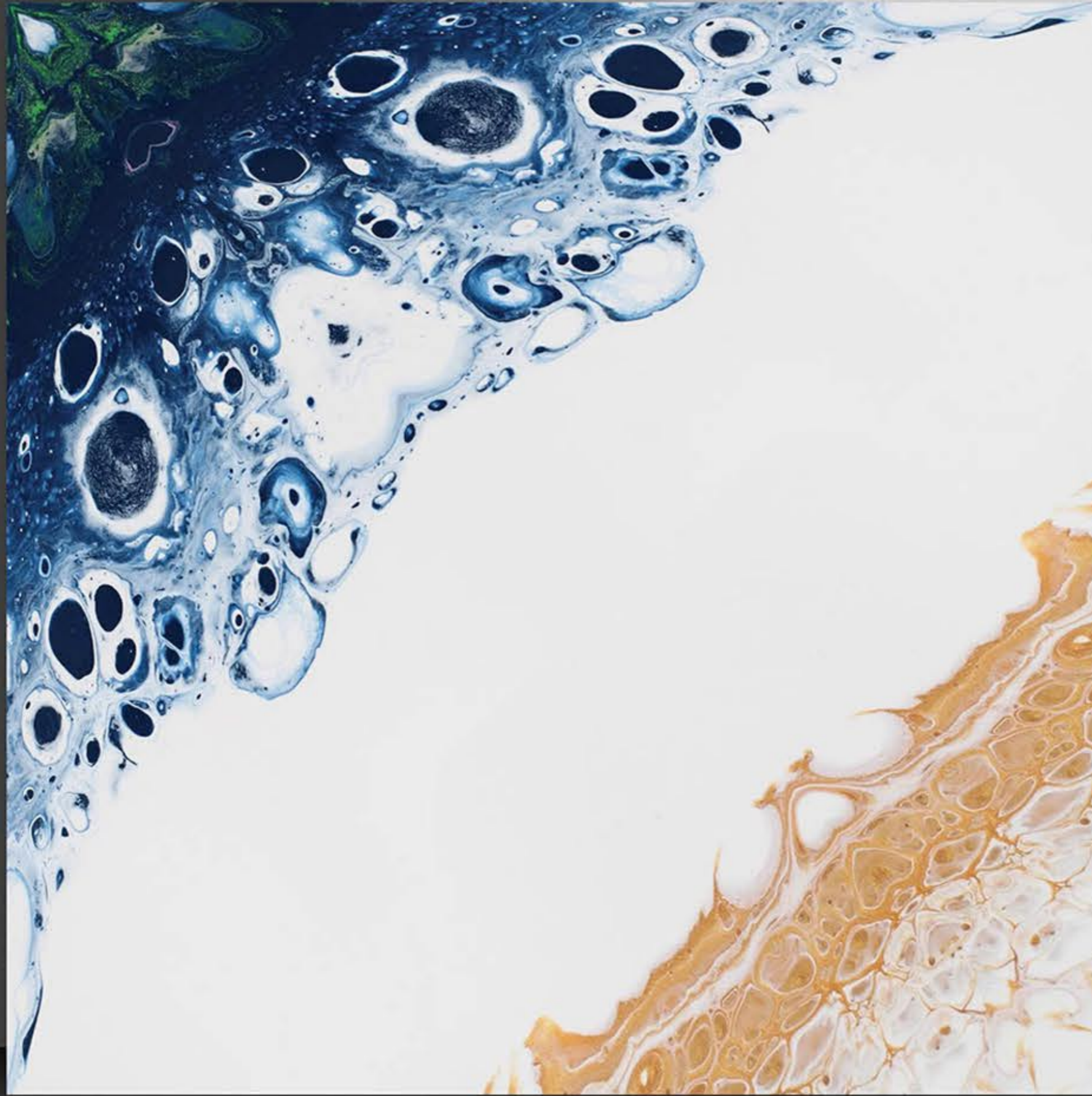
Series
Book Match



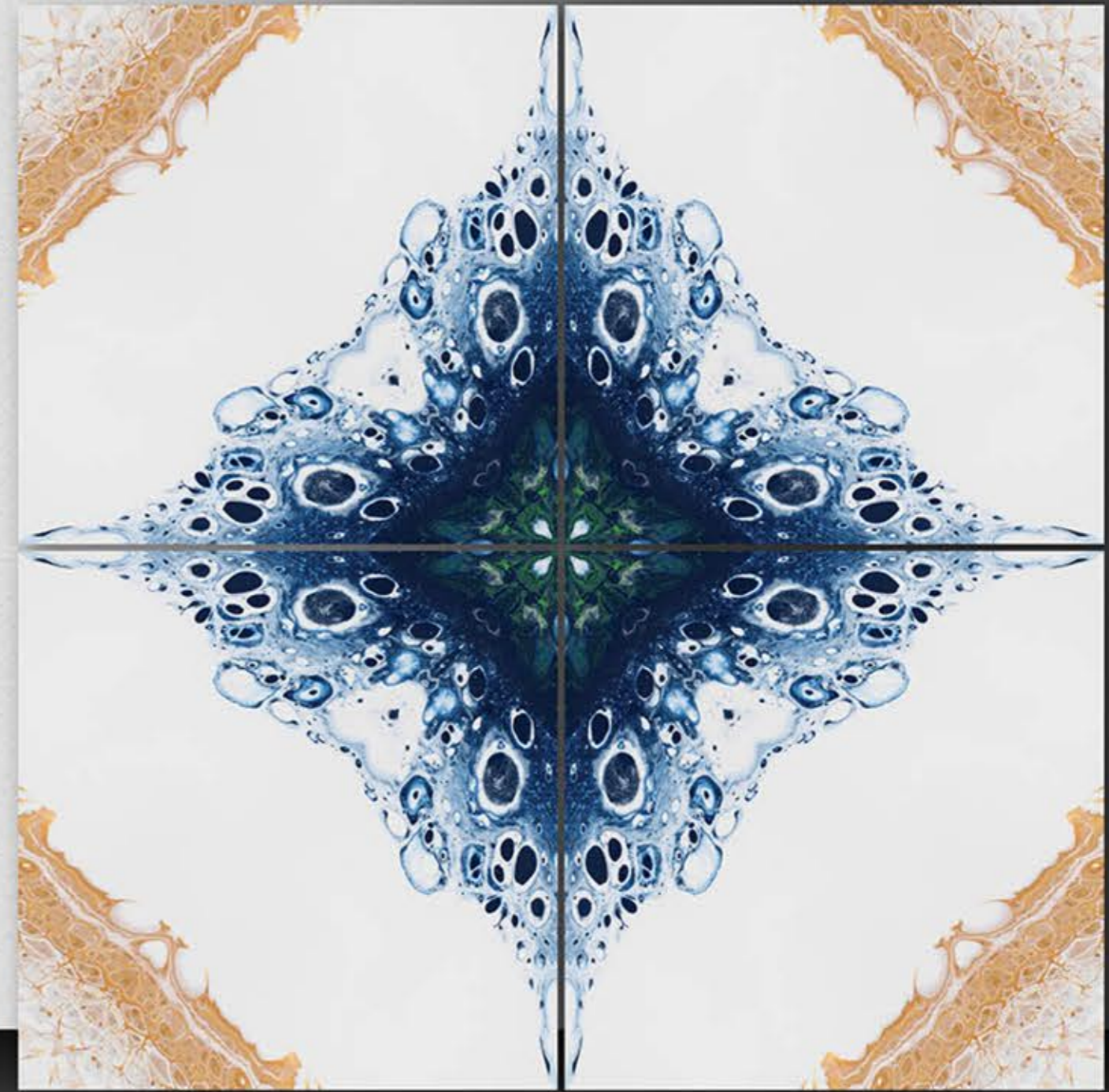
PORCELAIN TILES
600X600MM

5011

NEONTM
TILE



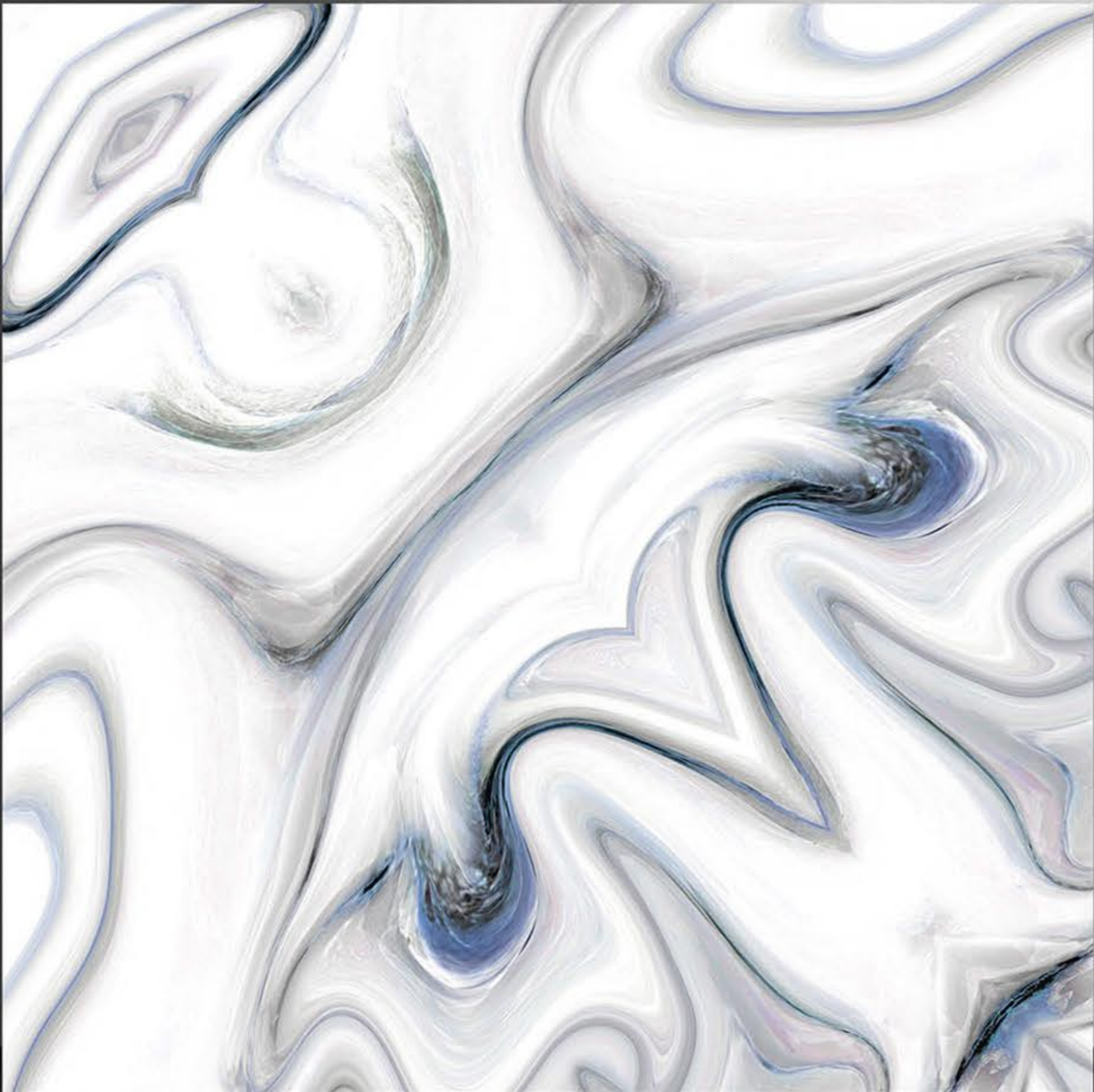
Series
Book Match



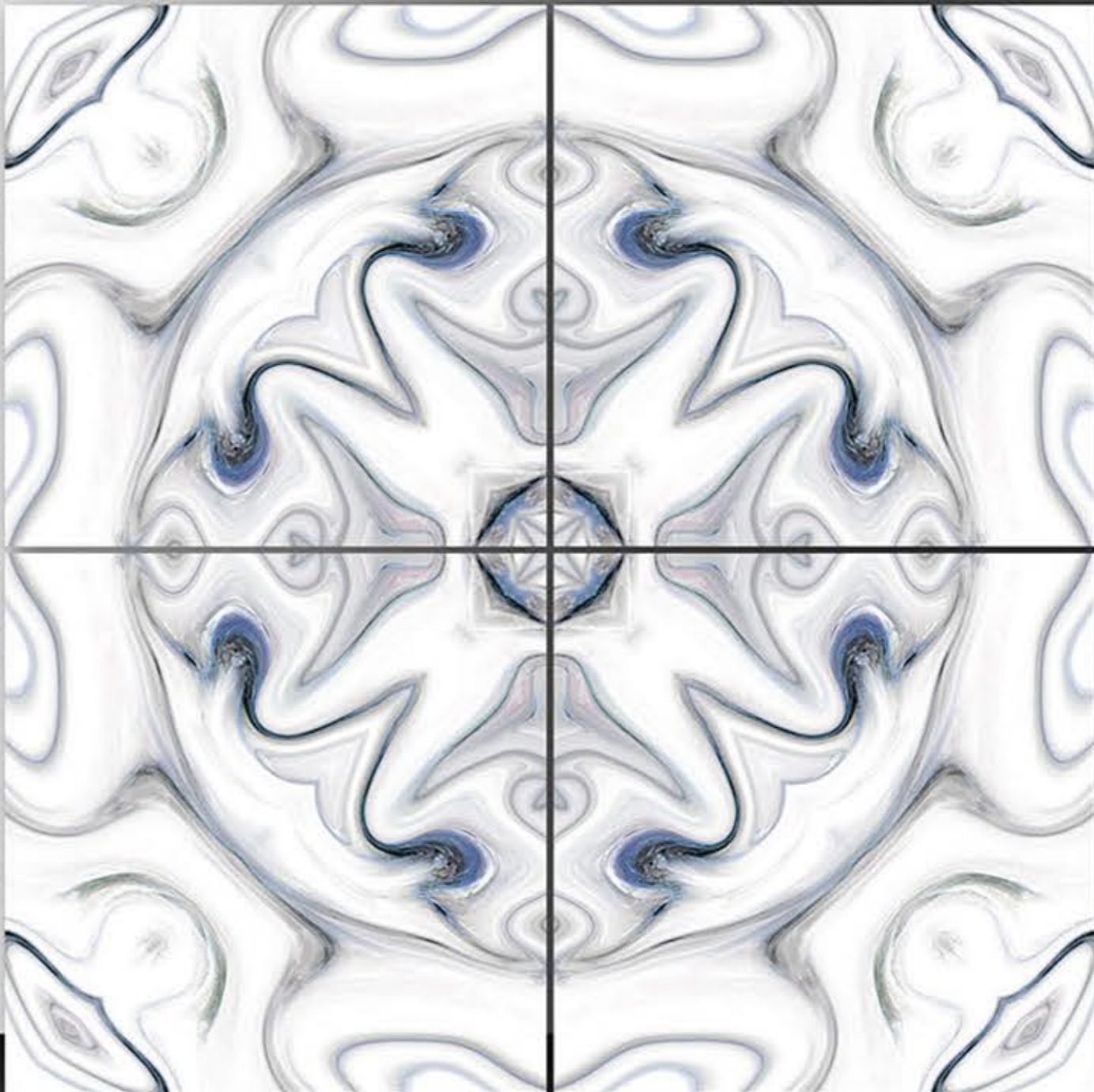
PORCELAIN TILES
600X600MM

5012

NEONTM
TILE



Series
Book Match



PORCELAIN TILES
600X600MM

5013

NEONTM
TILE



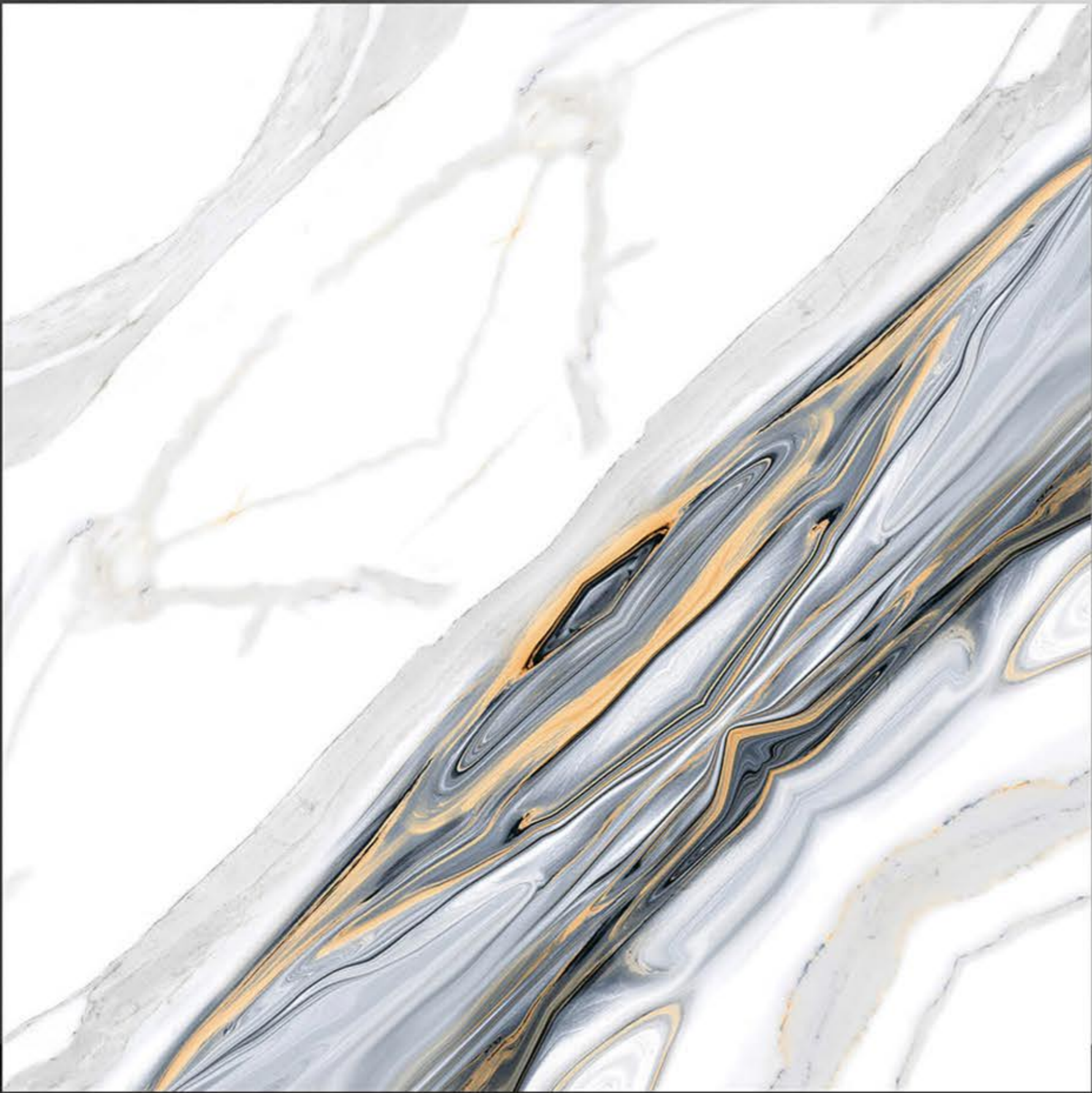
Series
Book Match



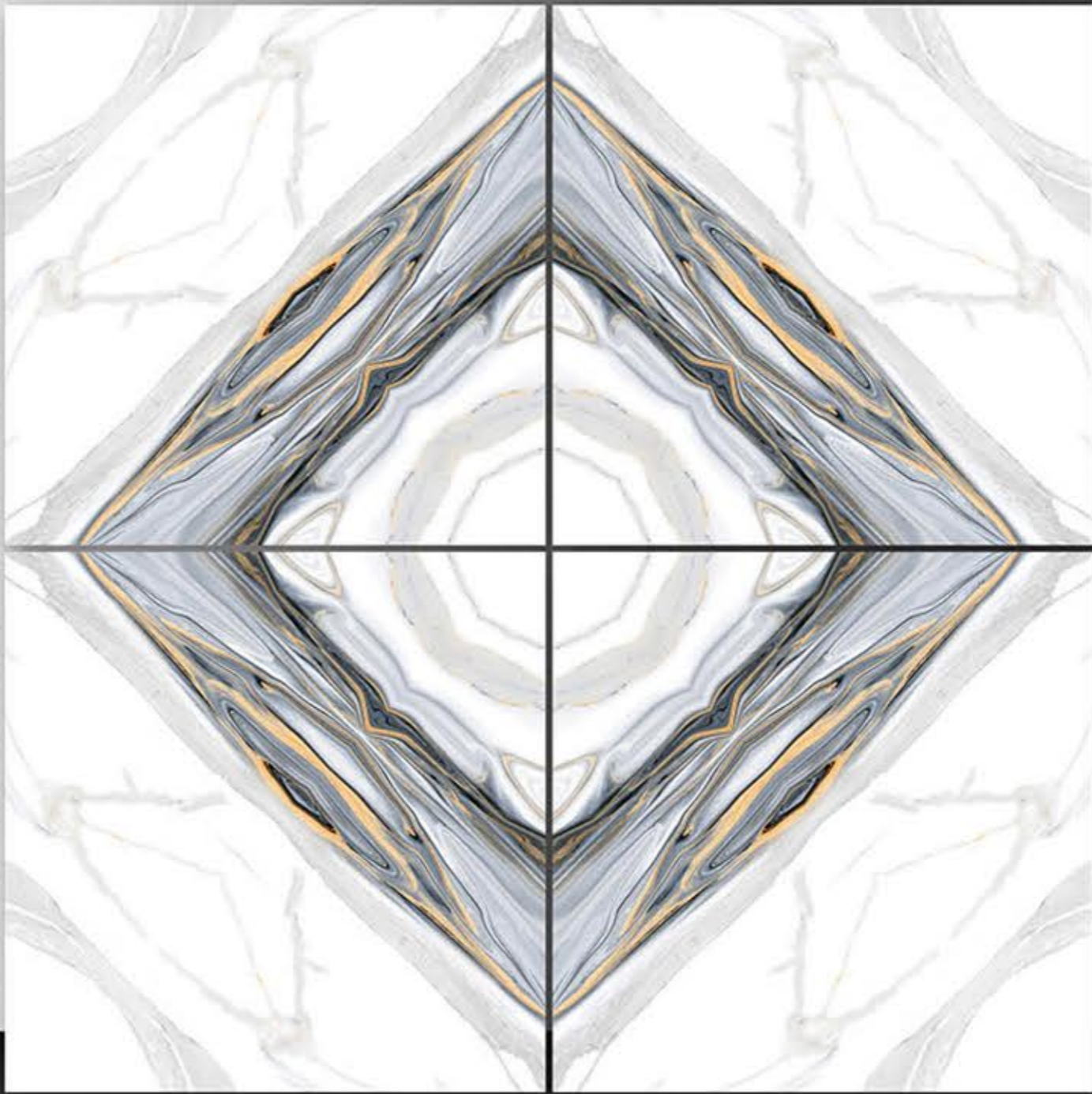
PORCELAIN TILES
600X600MM

5014

NEONTM
TILE



Series
Book Match



PORCELAIN TILES
600X600MM

5015

NEONTM
TILE



Series
Book Match





NEON TILE LLP

Corp. Office : G24, Siromany Business Center, B/h. Real Plaza,
8-A National Highway, Morbi-363 641. (Guj.) INDIA.

Call : +91 82382 31831

E : info@neontile.in

W : www.neontile.in

Follow Us :

